

domus  
stay.

---

## Palace Gardens Terrace

Kensington W8

4 Bedrooms, 3 Bathrooms  
For 8 guests

---





Standing tall on a pristine Kensington street, this four-bedroom family home captivates with generous proportions, sophisticated design and sun-drenched exterior spaces.

Across five thoughtfully curated floors, Palace Gardens Terrace invites an abundance of natural light through its impressive heritage framework. Inside, modern styling makes a statement against soaring period proportions.

A welcoming hallway leads through double doors to the open-plan kitchen and dining area, a space infused with sunlight from dual-aspect sash windows. Prepare small plates or feasts in the streamlined kitchen before gathering at the dining table; the room's soaring ceiling lending an opulent backdrop. Just beyond, a peaceful study connects to a glass-clad conservatory, seamlessly flowing into a private garden adorned with vibrant flowers and lush foliage.

The first floor unfolds into a more formal reception room, accentuating the home's timeless appeal with decorative cornicing and a marble fireplace. This is a setting to unwind, with soothing leafy views framed by sash windows to either side. On the half landing, step through curved French windows onto a charming terrace overlooking the garden below.







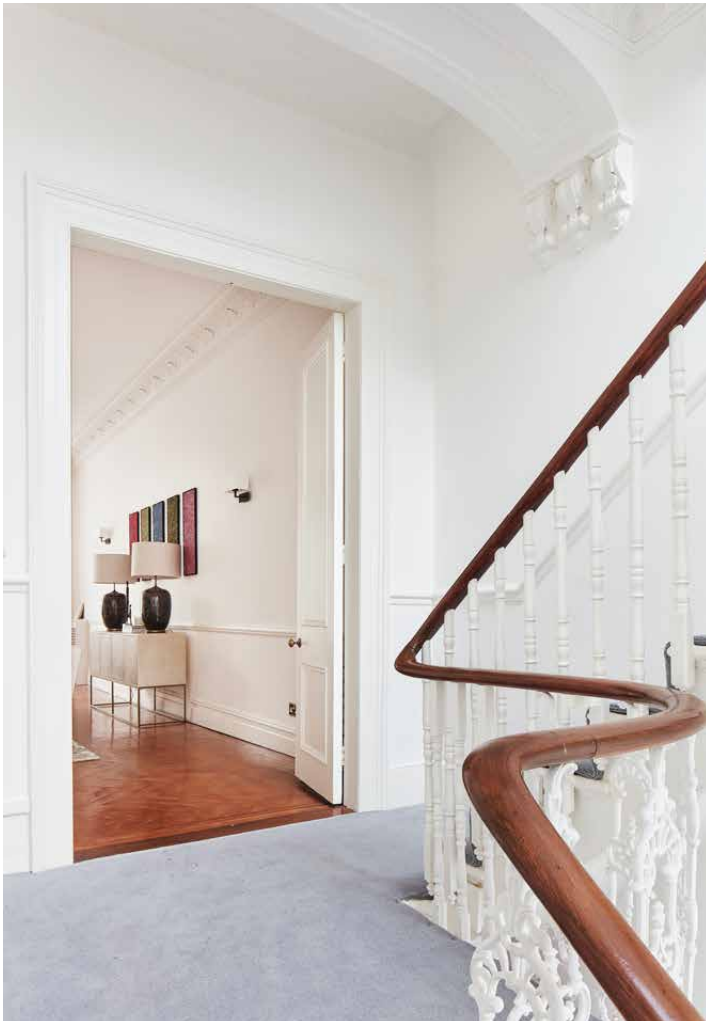




Surrounded by the best of west London, sprawling green spaces – Hyde and Holland Park – sit to either side. Wander up into Notting Hill or stretch your legs with a stroll to South Kensington.

“

Across five thoughtfully curated floors, Palace Gardens Terrace invites an abundance of natural light through its impressive heritage framework.

















The principal bedroom suite occupies the entire second floor, a thoroughly elegant affair with plush grey carpeting and a series of integrated wardrobes. Its en suite bathroom is a sanctuary of style, featuring a dual vanity and pebble-toned marble wrapping around a bath and separate shower. Three further bedrooms are found on the third floor, served by a family bathroom with a bathtub and dual vanity.

At the top of the house, a wood-panelled gym room awaits. Complete with a bathroom and sauna, it's an idyllic escape for relaxation and rejuvenation.



























## LOCATION

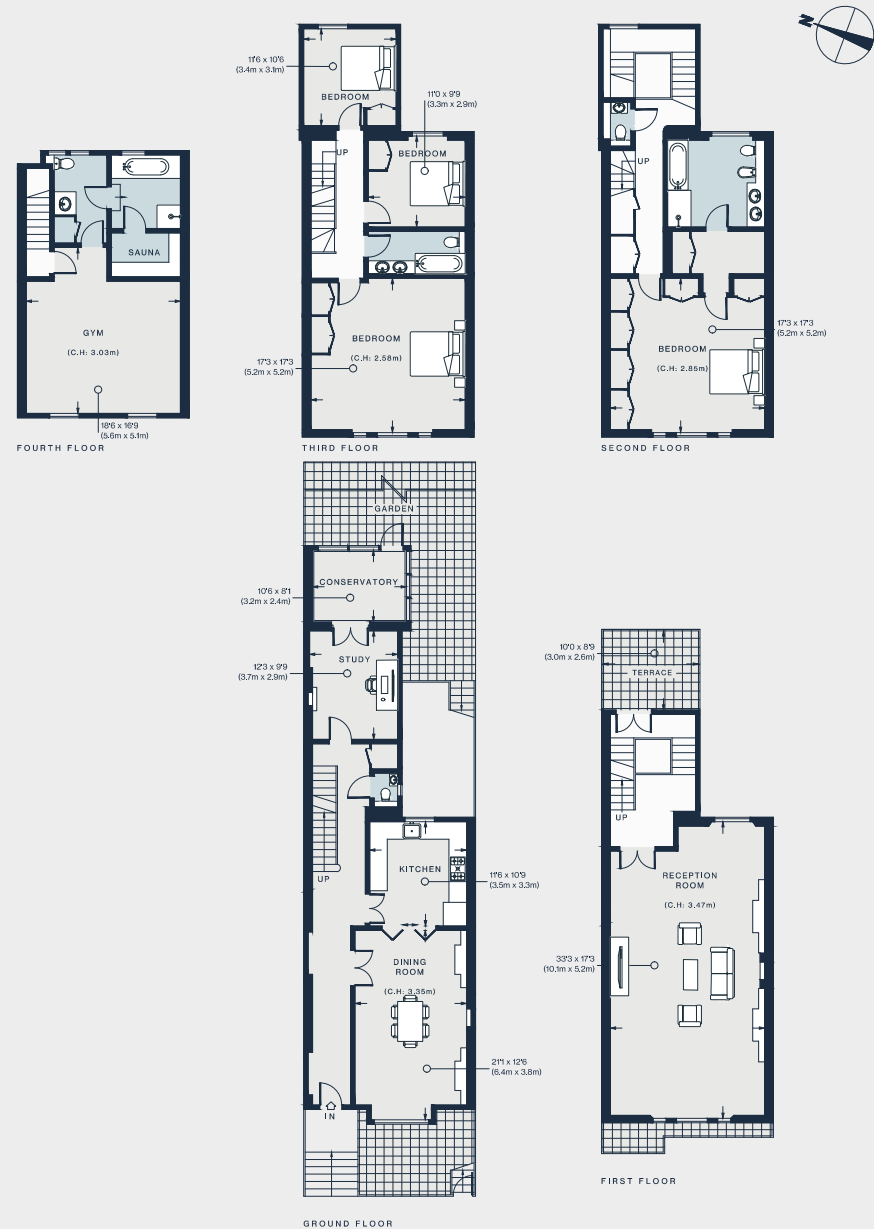
A neighbourhood steeped in history and rich in culture, Palace Gardens Terrace is on the doorstep to West London's most refined streets.

The verdant lawns of Kensington Gardens are a short walk away, while Holland Park Avenue and Kensington High Street are nearby for shopping and grocery offerings. Venture further up into Notting Hill for antiques boutiques and a film at the Electric Cinema, completed with a night of fine dining at local favourites Kitchen W8, Maggie Jones or Chakra.



## PROPERTY HIGHLIGHTS

- Open-plan kitchen and dining room
- Two reception rooms
- Principal bedroom suite
- Three further bedrooms
- Two further bathrooms
- Study
- Conservatory
- Gym room and sauna
- Private garden
- Two patios
- Utility room
- Royal Borough of Kensington & Chelsea



Approx. Gross Internal Area = 3,415 sq ft / 317.3 sq m

Floor plans are for illustrative purposes only and not to scale. Compliant with RICS code of measuring practice. Furniture layouts are indicative only. This property may be furnished, part-furnished or unfurnished. Please refer to your agent for details.





Please don't hesitate to get in touch if you have any questions or require any further information.

---

[hello@domusstay.com](mailto:hello@domusstay.com)

+44 (0)20 8168 8880

Domus Stay provides the perfect combination of property, place and personal service for the world's most remarkable people. If you have any questions, or if we can help in any way, please contact us on the above number. Be it about a property you have, a property you want, dates to check or any special requirements you may need, we'd love a chat.

