

domus  
stay.

---

## Eaton Place

Belgravia SW1W

4 Bedrooms, 3 Bathrooms  
For 8 guests

---





In this elegant Grade II listed duplex apartment, a meeting of heritage architecture and bold interiors leaves a lasting impression.

Set in the heart of Belgravia, Eaton Place bears the hallmarks of its esteemed period architecture with uniform rows of portico-fronted townhouses. Beyond the glass-fronted entrance door, this three-bedroom duplex home matches the postcode's sophisticated character.

The double reception room makes a captivating first impression. Soaring ceilings are ornamented with decorative cornicing, while two full-length sash windows draw in sunlight. A grand piano, oil paintings and cream-toned furniture add a refined look, which continues past double doors into the dining room. Inky-blue walls are a stylish canvas for the gold-framed mirror, sleek wood furniture and a range of black-and-white photographic prints. Floor-to-ceiling French windows open out to the terrace, with its cast-iron railings that wrap around the interior void.



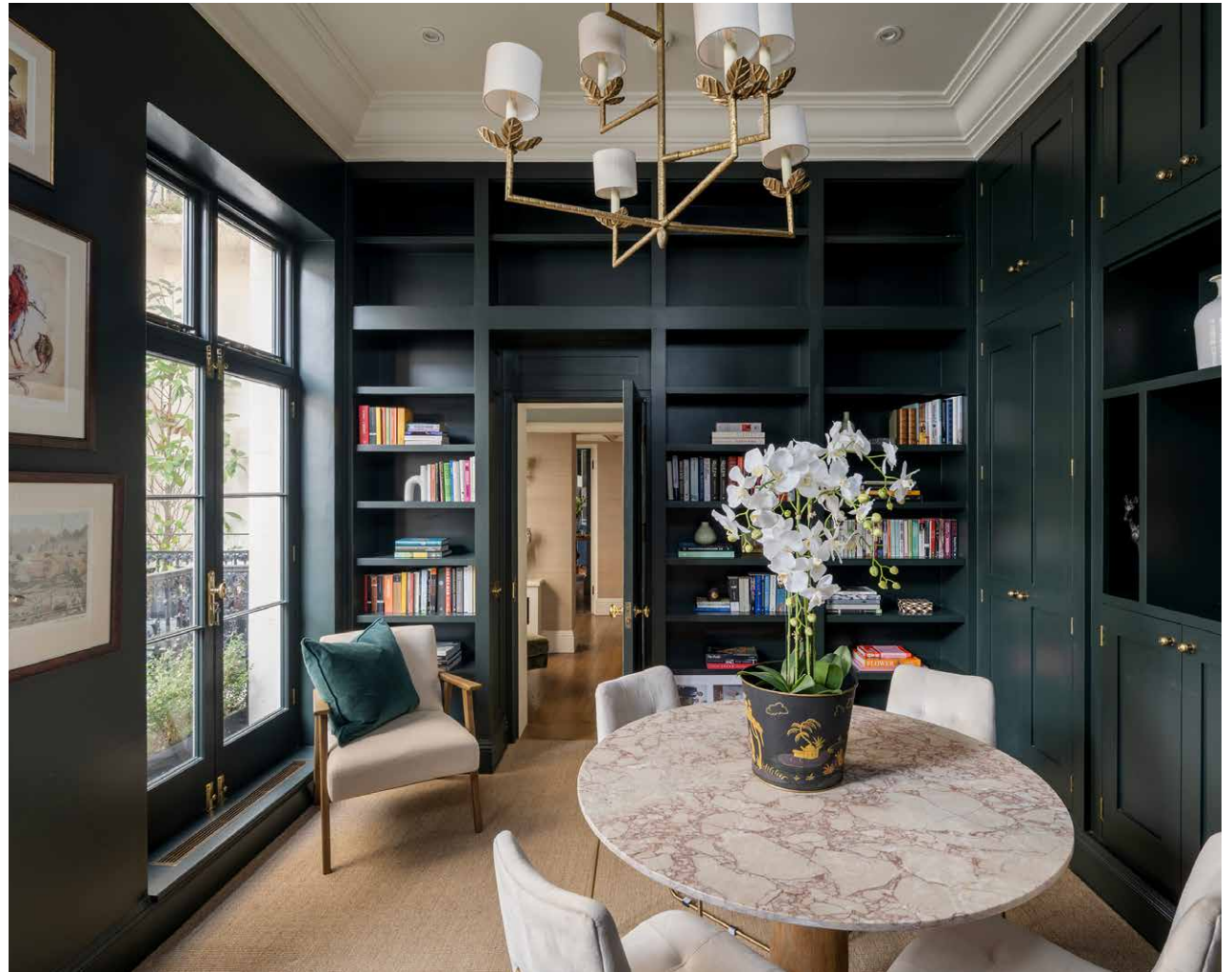




A set of steps leads down into the shaker-style kitchen, which is finished with dark-teal cabinetry, marble surfaces and Miele appliances. A wooden preparation table at its centre offers a rustic edge to the space, with additional light brought in through the vaulted glass roof. A trio of sash windows looks onto the terrace, which is complete with garden furniture for warm-weather entertaining.

“

Also on the ground floor is a modish breakfast room, with sisal carpets, a marble-topped table and French windows that lead out onto balconies.





There's space for everyone to press pause, with three immaculately-considered bedroom suites located on the lower-ground floor. The principal bedroom is wrapped in a vintage-style chintz wallpaper, setting a bold tone for the green upholstered bed frame and antique wood furniture. Reams of sunlight pour through a set of glazed doors, through which is direct access to the paved patio garden. The en suite bathroom is a masterstroke of marble, with its glossy greyscale tiling setting the scene for a freestanding bathtub, walk-in shower and dual vanity. Beyond, a walk-in wardrobe has been crafted with geometric-panelled bespoke wardrobes. The additional guest bedroom suites are calming spaces, with plenty of sunlight and corridor wardrobes for neat storage. One of the rooms enjoys an additional sitting room, with access to a utility room and kitchenette.



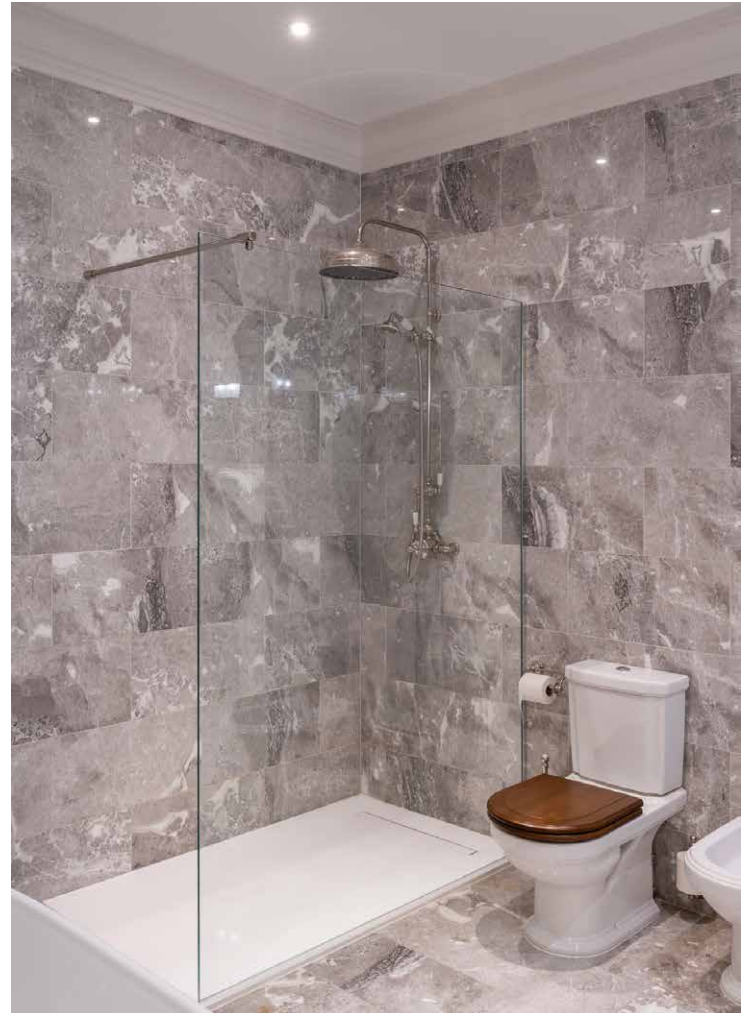












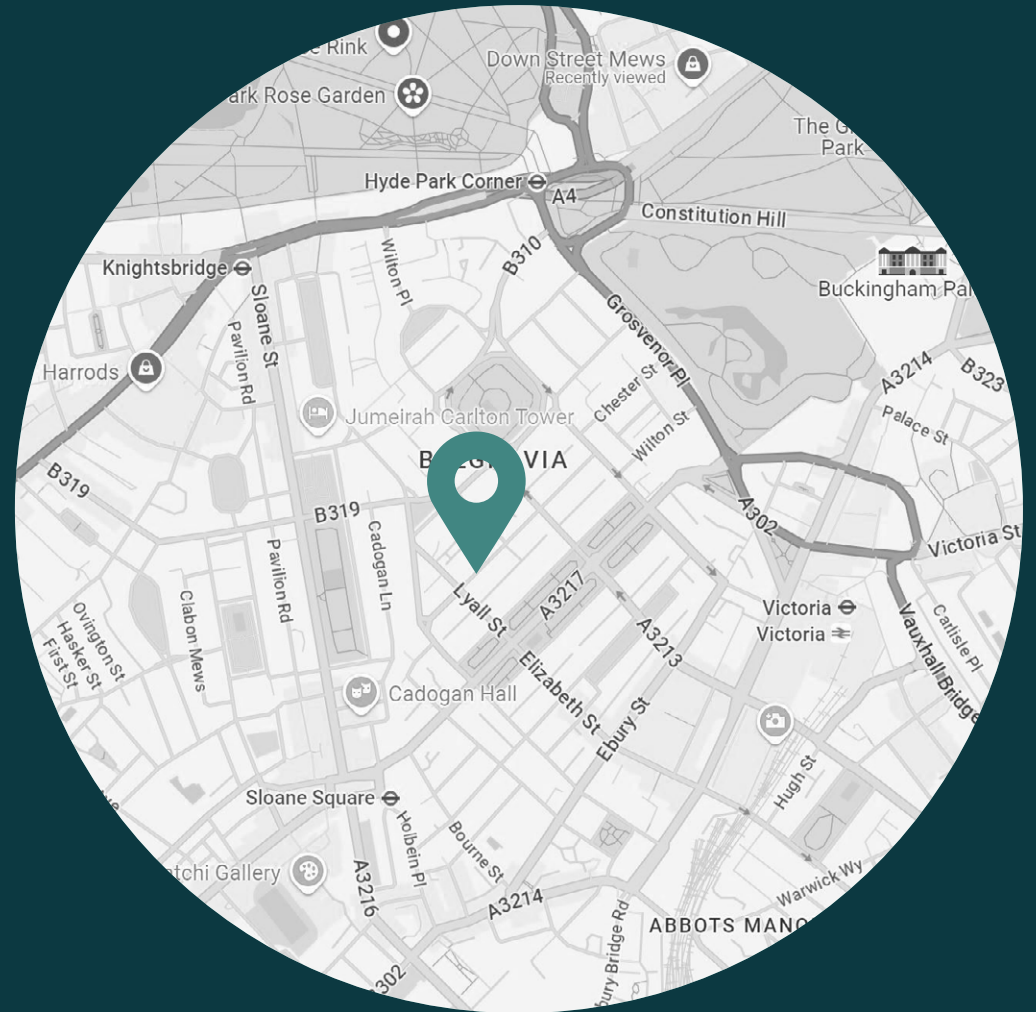




## LOCATION

Bordered by Knightsbridge and Chelsea, Eaton Place is a springboard to some of London's most well-heeled spots.

Start your morning on village-like Elizabeth Street with a coffee from Tomtom, stopping by Chestnut Bakery and Bayley & Sage to source organic produce. Head to the King's Road for an abundance of retail offerings, followed by an art-filled afternoon at the Saatchi Gallery. During springtime, the streets bloom for the infamous FHS Chelsea Flower Show. There's fine dining options aplenty, from La Poule au Pot to Hunan, Pétrus by Gordon Ramsay and The Harwood Arms – London's only Michelin-starred pub. Plus, Victoria Station is nearby, giving you easy access across the rest of the capital.





### PROPERTY HIGHLIGHTS

- Grade II listed property
- Open-plan double reception and dining room
- Breakfast room
- Kitchen
- Sitting room
- Principal bedroom suite with walk-in wardrobe
- Three guest bedroom suites
- Utility room / kitchenette
- Private terrace and patio garden
- City of Westminster



domus  
stay.

Please don't hesitate to get in touch if you have any questions or require any further information.

[hello@domusstay.com](mailto:hello@domusstay.com)

+44 (0)20 8168 8880

Domus Stay provides the perfect combination of property, place and personal service for the world's most remarkable people. If you have any questions, or if we can help in any way, please contact us on the above number. Be it about a property you have, a property you want, dates to check or any special requirements you may need, we'd love a chat.

