

domus  
stay.

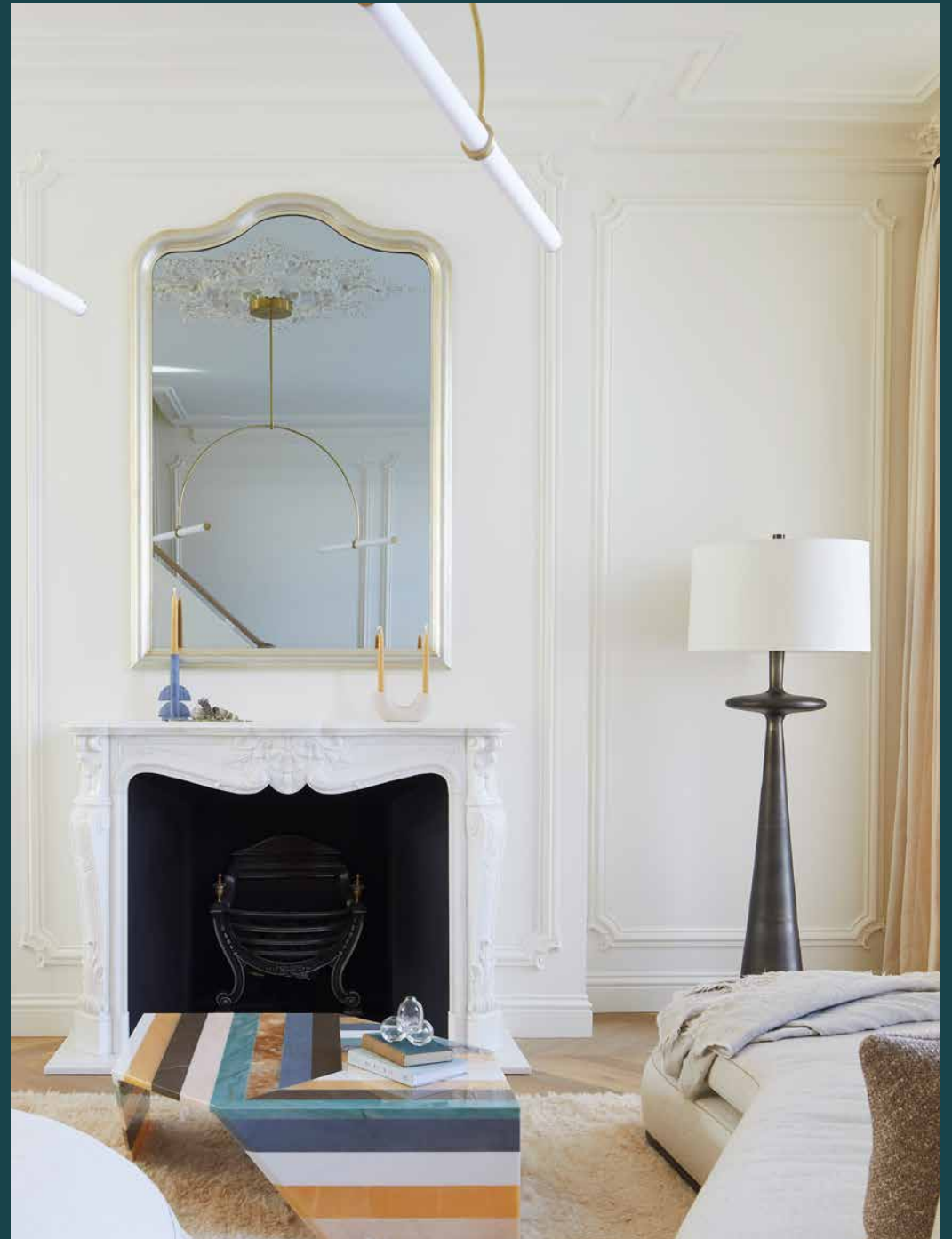
---

## Elgin Crescent

Notting Hill W11

2 Bedrooms, 2 Bathrooms  
For 4 guests

---





## This flawlessly-crafted duplex apartment pays homage to the elegance of Parisian design.

Artisanal furniture, luxury technology and an abundance of sunlight sets a new benchmark for contemporary city living. On one of Notting Hill's most admired residential crescents, two derelict apartments in a stucco-fronted townhouse were masterfully transformed into a luxury two-bedroom duplex. Thanks to the innovative eye of interior designers Studio Mae, this home strikes a harmonious balance between period and contemporary styling, filled with bespoke furniture and state-of-the-art technology. With wellness and serenity at the core of its renovation mission, Elgin Crescent is the ultimate sanctuary for a city escape.

As soon as you enter, the voluminous 3.5 metre-high ceilings and reams of natural light set a relaxing feel in motion. On the first floor, the open-plan kitchen, dining and reception room is sleek in design and welcoming in atmosphere. Smoked oak chevron floors draw you into the space, which is beautifully illuminated through dual-aspect windows. There's an air of Parisian elegance drawn with the natural colour palette, floor-to-ceiling curtains and refined furnishings: an inviting Maxalto sofa and eye-catching Budri Origami coffee table are positioned by the marble fireplace, while a sculptural Naama Hoffman light is suspended overhead. Note the immaculately-crafted wall mouldings, cornicing and ceiling rosettes — a feat of architectural prowess by French decorators Auberlet et Laurent. Demonstrating the home's commitment to sustainability, non-toxic Farrow & Ball paint has been used throughout.



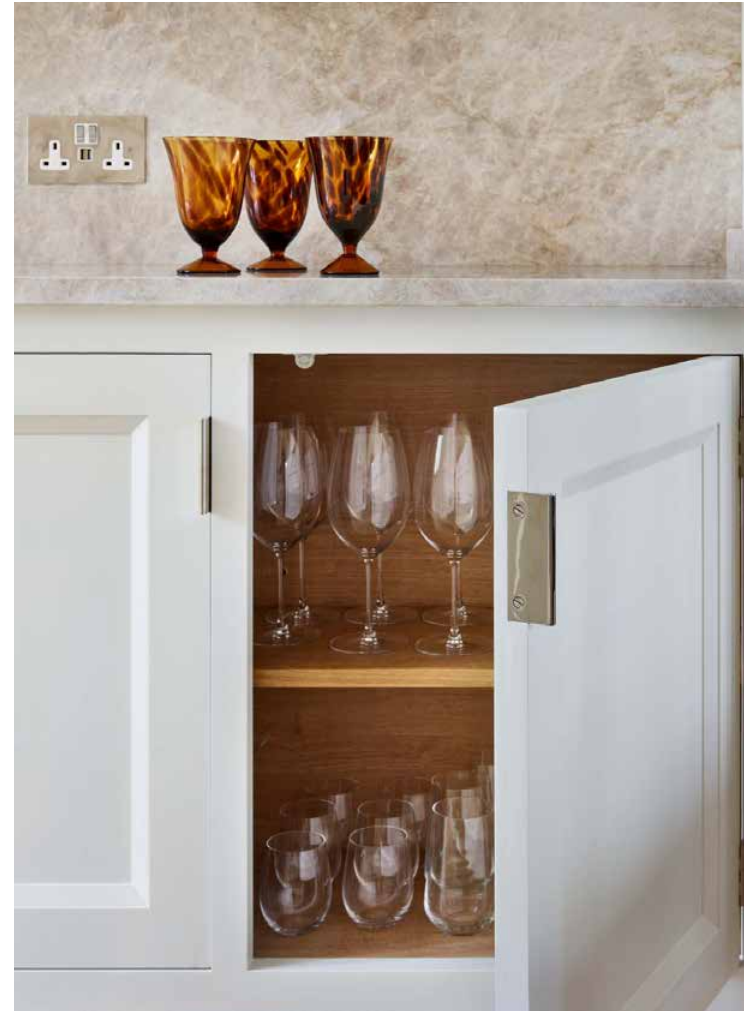
French windows open onto a Juliet balcony, overlooking verdant communal gardens — which residents have access to.



“

When London's in sun, head down to the residents' communal gardens and marvel at the abundant greenery.

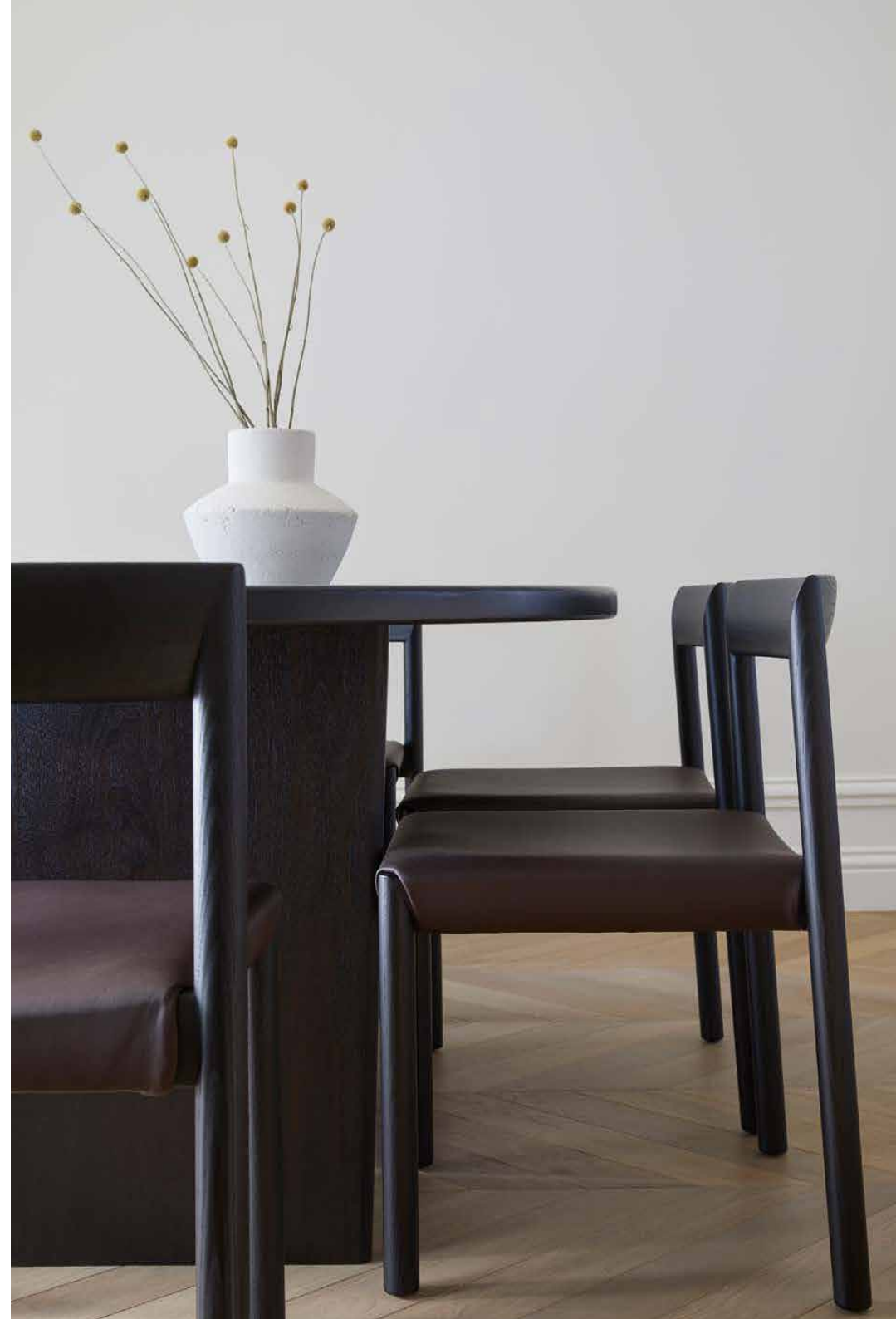






An artisanal walnut dining table separates the living and cooking spaces. Beyond here, the bespoke Martin Moore kitchen is a masterstroke of modern design. Centering the space is a lozenge-shaped island, topped with double-bevelled edged marble. To either side, Taj Mahal Quartzite countertops add a lustrous quality, complete with integrated Gaggenau, Miele and Quooker appliances. Mornings are easy with the Rocket Italy coffee machine, while the wine fridge makes for breezy entertaining, come evening time.

In keeping with the entire property, a Deco-inspired staircase is a sublime point of architectural engineering. It ascends in one sweeping curve, complete with a floating oak handrail. Beneath the stairs, there are handless panels that conceal spacious storage areas.









Upstairs, two bedrooms set a new standard for interior sophistication and relaxation. In the principal suite, a Bocci cluster pendant chandelier and bespoke LED-lit wardrobes make a feature of the room's 3-metre period proportions. The Naturalmat bed is paired with sustainable linens and sits on an organic wool rug. Next door, the bathroom is an awe-inspiring setting. The vanity unit features mushroom marble and corrugated-effect panelling to match the bedroom storage, complete with an oversized rainfall shower. The secondary bedroom is drawn with a muted blue colour and a walnut desk, complemented by the same sustainably-minded bedding and LED-lit wardrobes as the principal. It's served by an additional bathroom, featuring a contemporary bathtub perfect for long soaks.









## LOCATION

Elgin Crescent is the elegant stepping stone to this coveted West London neighbourhood.

Immerse yourself in the fabric of Notting Hill along Portobello Road — the iconic market street that's lined with vintage boutiques and global food stands. There are plenty of wellness spots to explore, from SoulCycle to Bodyism and Barrecore. Westbourne Grove is your go-to for brunch with friends and high-end retail therapy, while organic groceries can be sourced from Daylesford and Notting Hill Fish + Meat Shop. For special occasions, Michelin-starred Core by Clare Smyth is just moments from your doorstep.



## PROPERTY HIGHLIGHTS

- Newly-refurbished duplex apartment
- Interior design by Studio Mae
- Artisanal, sustainable and ethically-sourced furnishings
- State-of-the-art technologies and appliances
- Open-plan kitchen, dining and reception room
- Principal bedroom suite
- Guest bedroom
- Guest bathroom
- Additional storage
- Access to residents' communal gardens
- Royal Borough of Kensington & Chelsea



**domus  
stay.**

Please don't hesitate to get in touch if you have any questions or require any further information.

[hello@domusstay.com](mailto:hello@domusstay.com)

+44 (0)20 8168 8880

Domus Stay provides the perfect combination of property, place and personal service for the world's most remarkable people. If you have any questions, or if we can help in any way, please contact us on the above number. Be it about a property you have, a property you want, dates to check or any special requirements you may need, we'd love a chat.

