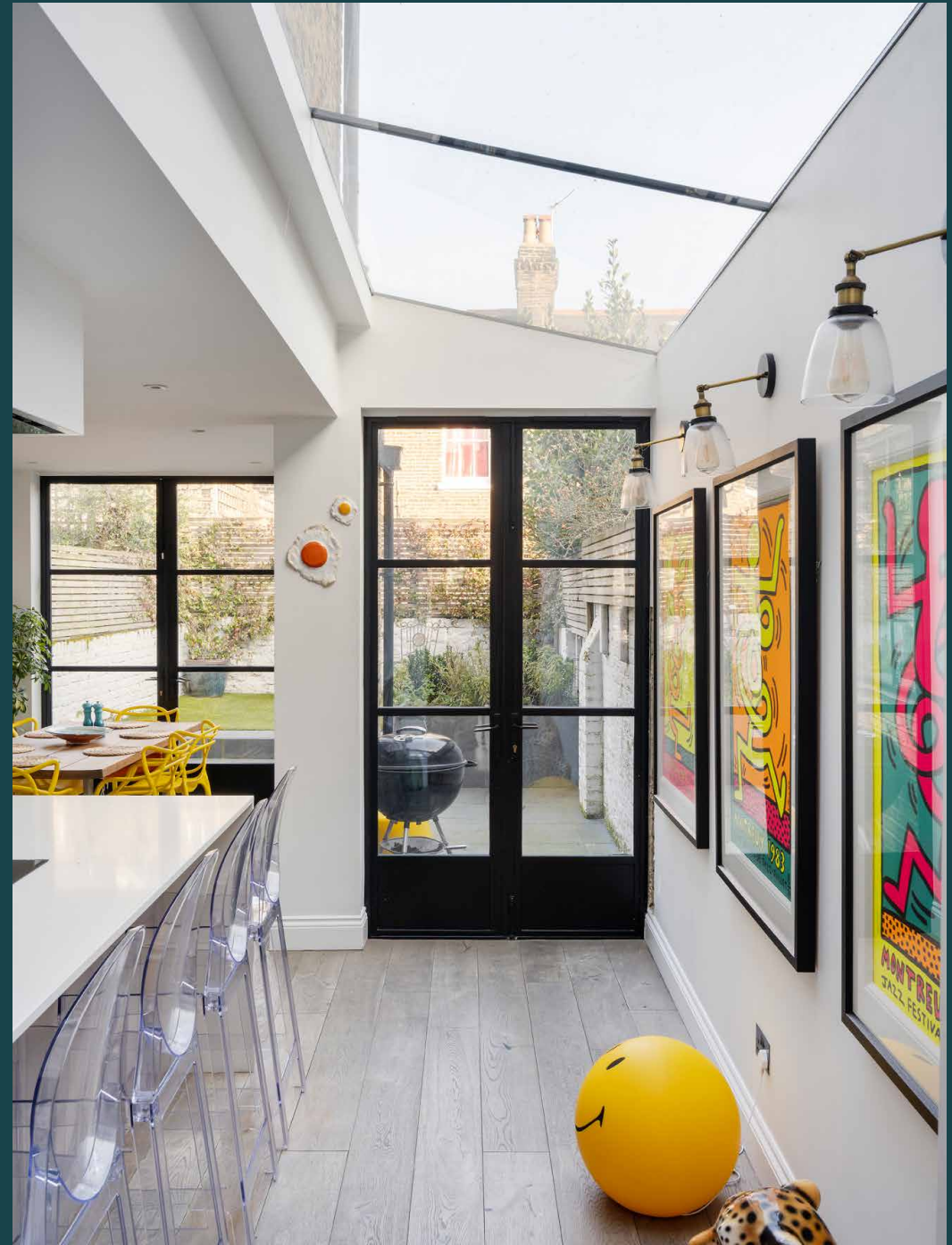


domus  
stay.

# Ilbert Street

Queen's Park W10

2 Bedrooms, 2 Bathrooms  
For 4 guests





A playful palette and eclectic artwork bring charm and character to this two-bedroom Queen's Park terrace.

There's a creative, close-knit feel to Queen's Park – and this art-filled home on a pretty terraced street reflects the neighbourhood's charm. Personality – and practicality – are stamped over the interiors here, elevating the everyday.

Colour and contemporary flair define the home's living spaces. Subtly separated from the kitchen and dining room, the reception room is drenched in pale pink and illuminated by a large sash window. A period fireplace takes centre stage, flanked by integrated storage. Kick back on one of the blue velvet sofas with a book from the well-stocked bookshelves or unwind by spinning vinyl on the record player.

Eye catching artwork continues into the home's social heart: the kitchen and dining room. Here white walls give way to striking Keith Haring prints and eclectic sculptures. Every touch is considered here, from the skylit breakfast bar to the sleek integrated appliances, ensuring entertaining is easy. A dining table for six looks out over the private garden through Crittall-style double doors, bringing the outside in. The outdoor space features a barbecue and outdoor furniture – a private sun trap perfect for an end-of-day tipple.





Pops of colour, eclectic art and open-plan living spaces ensure a relaxed, free-flowing feel.



“

Every touch is considered here, from the skylit breakfast bar to the sleek integrated appliances, ensuring entertaining is easy.



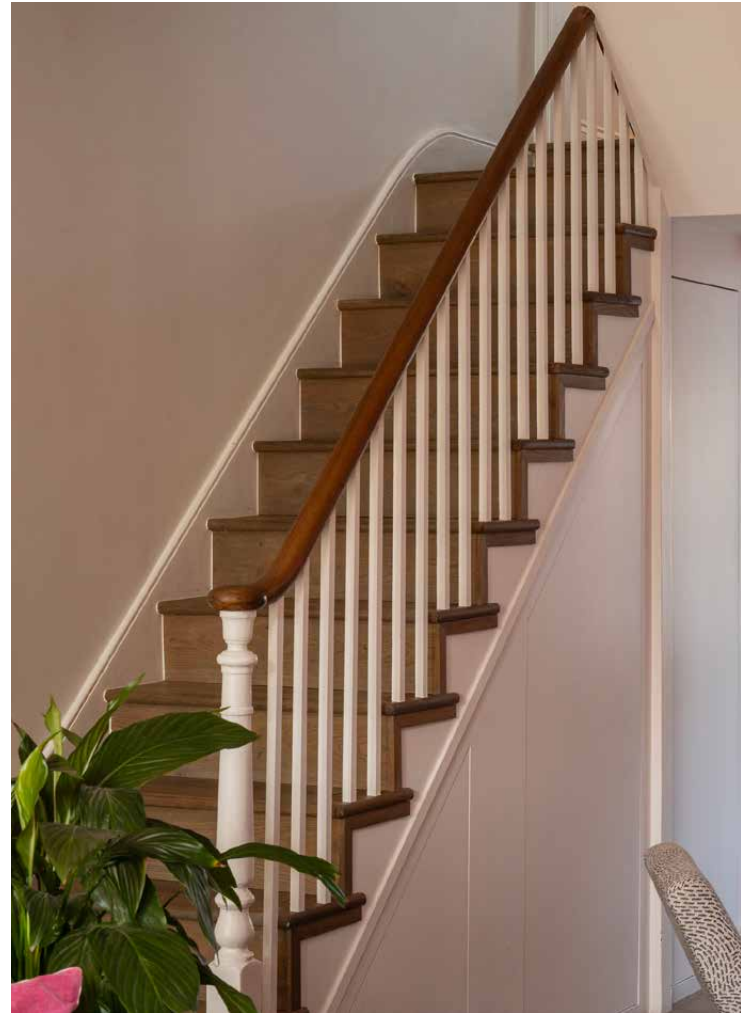
















Back inside and ascending the wooden stairs, two bedrooms are found across the upper floors. In the principal, cool green walls and a set of sash windows lend a calming disposition, illuminated by splashes of colour from captivating artwork. The room also features a bank of integrated storage and a grey-toned en suite bathroom – refresh in the spacious rainfall shower. On the same floor, a study-cum-gym enjoys the same relaxing feel, perfect for an early morning workout on the Peloton.

A second bedroom takes the home's top floor; a peaceful setting with a neutral palette. The family bathroom serves this room, all pale grey tiles and mirrored panels – spend an evening unwinding in the bathtub.

















## LOCATION

A neighbourhood renowned for its sense of community, there's a welcoming feel surrounding Ilbert Street.

Start your day with a healthy bowl from Açai Carioca, followed by a leisurely stroll around Queen's Park's green space – a dose of escapism any day of the week. On Sundays, shop for fresh produce at the farmers' market. For a special celebration, book a table for dinner at welcoming local spot Carmel. End the evening with a spot of culture at the Lexi, a neighbourhood cinema run by volunteers. Your springboard to the city, Queen's Park station is just a 10-minute walk away.



### PROPERTY HIGHLIGHTS

- Bright and inviting reception room
- Open-plan kitchen and dining room
- Principal bedroom suite
- Guest bedroom
- Family bathroom
- Study
- Private garden





# domus stay.

Please don't hesitate to get in touch if you have any questions or require any further information.

[hello@domusstay.com](mailto:hello@domusstay.com)

+44 (0)20 8168 8880

Domus Stay provides the perfect combination of property, place and personal service for the world's most remarkable people. If you have any questions, or if we can help in any way, please contact us on the above number. Be it about a property you have, a property you want, dates to check or any special requirements you may need, we'd love a chat.

