

domus  
stay.

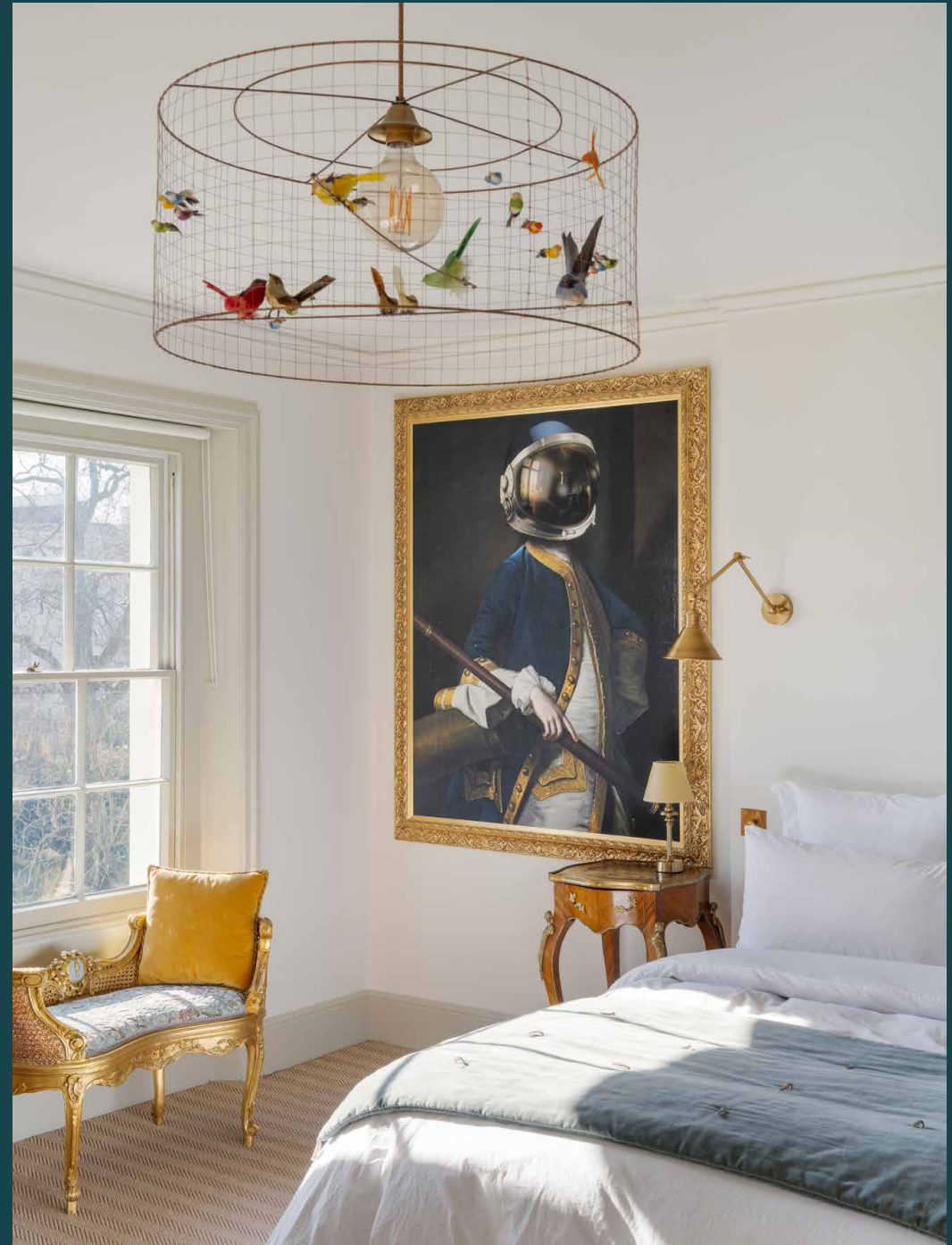
---

## Eccleston Square

Belgravia SW1W

4 Bedrooms, 3 Bathrooms  
For 8 guests

---





A gallery of inspiring design. Spread across five spacious floors, Eccleston Square is a picture of refined eccentricity.

Nestled in the heart of Belgravia, this sophisticated four-bedroom family townhouse effortlessly combines classic elegance with contemporary flair – with beautifully-designed spaces that are perfect for socialising and switching-off.

The home's entrance hallway makes an inviting first impression, with geometric tiles and a colourful array of glass pendant lighting.

This atmosphere is continued into the kitchen, which is bathed in sunlight through a large bay window. Indigo herringbone tiling stretches across the floor, while blue cabinetry frames either side of the space. Designed with culinary creativity in mind, there are two stoves to choose from: an electric Bosch oven or the teal-toned AGA, which adds a country-pile feel to the setting. Through double glass doors, there's a relaxed breakfast room furnished with floral-patterned antiques.

Upstairs, social life continues in the expansive reception and dining room. While the ornate cornicing, marble fireplace and gold-framed oil paintings lend a heritage feel, there's a contemporary edge drawn with the relaxed green leather sofa and contemporary portraiture. Swing open the French windows to reveal the private terrace, which overlooks the leafy communal gardens. Beyond the formal dining area, there's a meditative reading nook set against floor-to-ceiling glazing.









Eccleston Square's handsome period architecture gives space for interior creativity: the contemporary artwork, reclaimed furnishings and eye-catching colours make for an engaging setting.



“

Beyond the formal dining area, there's a meditative reading nook set against floor-to-ceiling glazing.









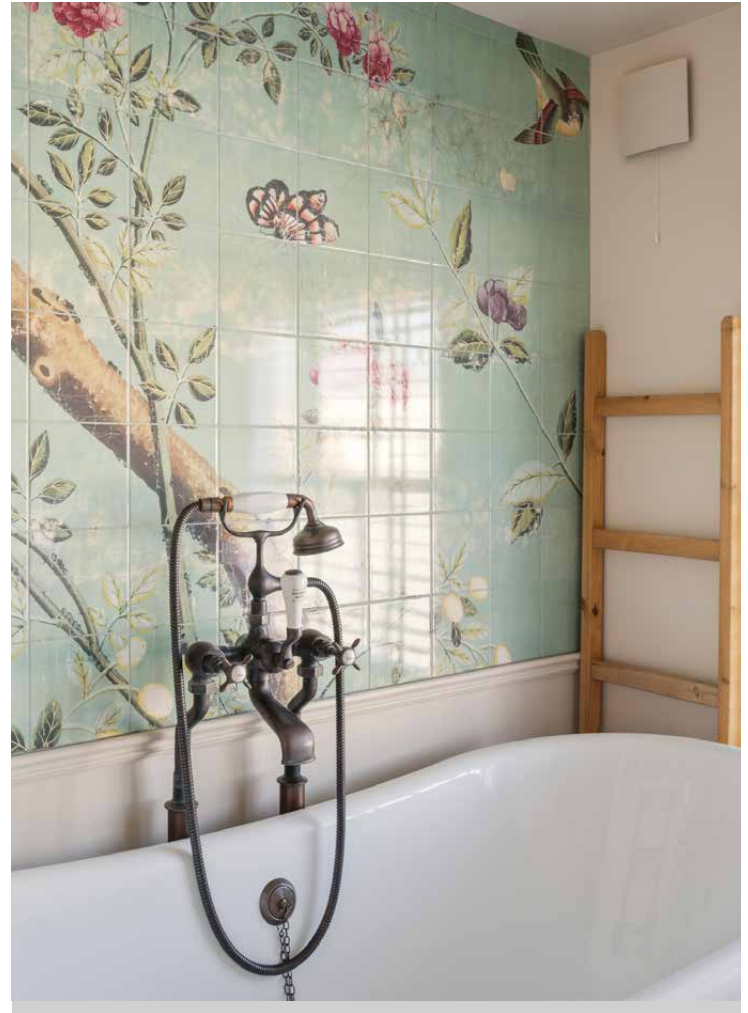
Serene and sophisticated, the principal bedroom suite is the place in which to press pause. Pale pink walls set a calming ambiance for the velvet green upholstered bed and painted screen, while natural light gently filters through two sash windows. Head through a handsome dressing room into the en suite bathroom, where a copper-toned freestanding bath takes centre stage.

Three guest bedrooms are spread across the home's upper storeys, each designed with a classic-meets-contemporary look. They're served by two guest bathrooms, both featuring an array of colourful tiling, gilded hardware and relaxing showers. If you'll be working from home, there are three tranquil office spaces to choose from. After you've clocked off for the day, spend some time in the private gym with its selection of beautifully-crafted equipment – including a boxing pad, gymnastic bar and walking pad. To stretch your legs a little further, there's the grassy lawns of Eccleston Square's communal gardens to explore.

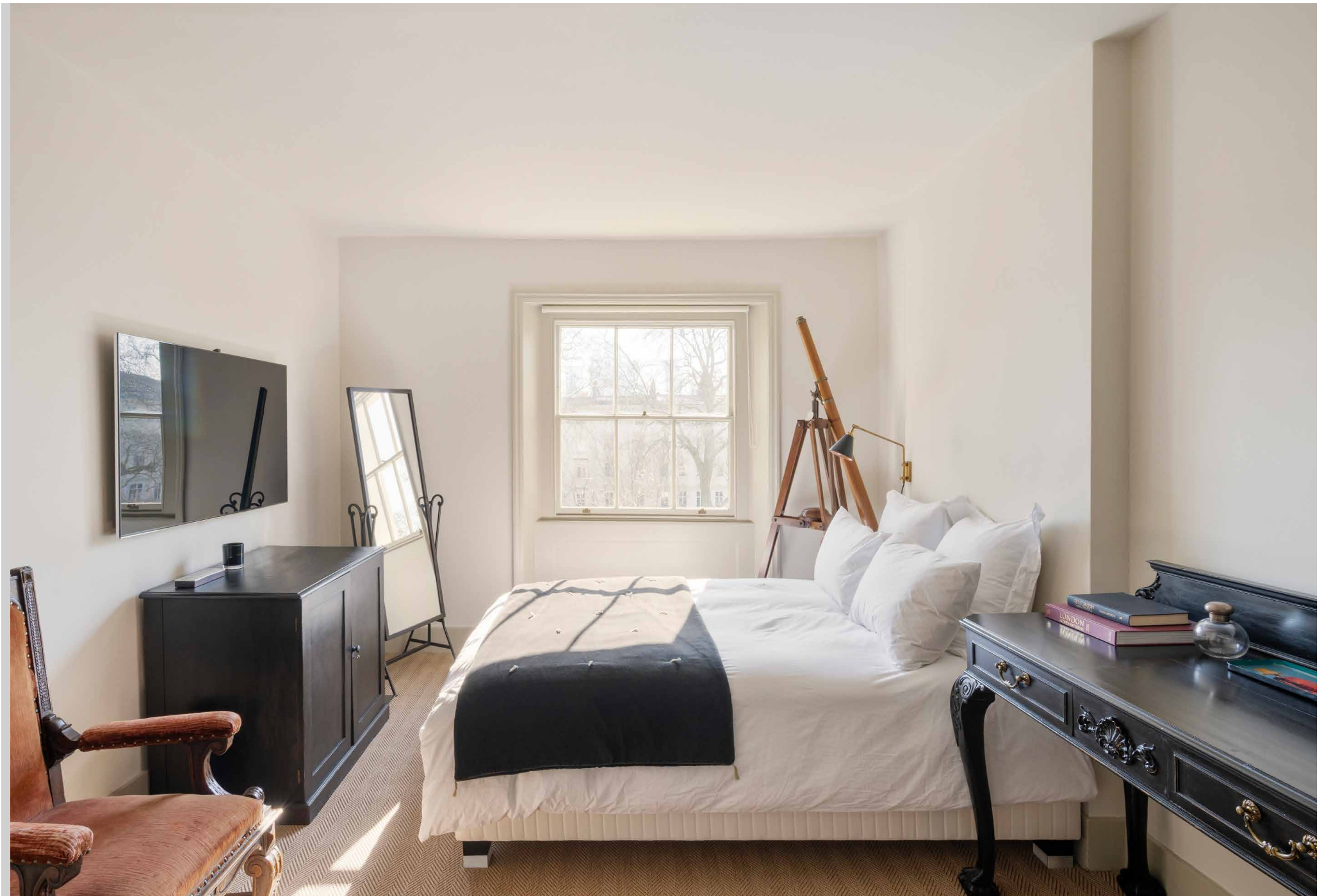




















## LOCATION

Caught between Pimlico, Belgravia and Westminster, Eccleston Square puts you in a prime location to explore Central London's varied offerings.

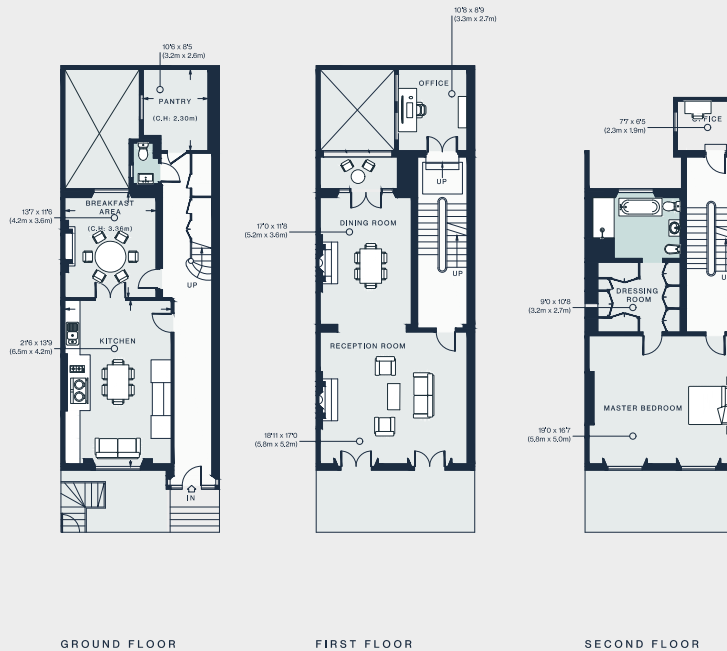
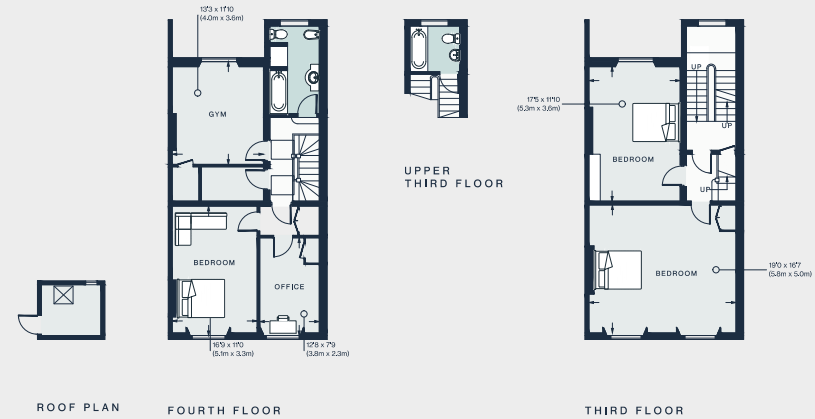
Immerse yourself in the inimitable department stores of Harvey Nichols and Harrods – world-class destinations for innovative fashion, state-of-the-art technology, and sumptuous artisanal produce – or venture to nearby Chelsea's upmarket high street, the King's Road. There's no shortage of sights for culture-seekers, with Buckingham Palace, Westminster Abbey, The Guards Museum and Tate Britain all within a 20 minute walk. Plus, Victoria Station is on your doorstep for quick transport around the capital and beyond.





## PROPERTY HIGHLIGHTS

- Open-plan kitchen and breakfast room
- Open-plan reception and dining room
- Principal bedroom suite with dressing room
- Three guest bedrooms
- Two guest bathrooms
- Three offices
- Gym
- Pantry
- Terrace
- Access to communal gardens
- City of Westminster



Approx. Gross Internal Area = 3,874 sq ft / 360.0 sq m

Floor plans are for illustrative purposes only and not to scale. Compliant with RICS code of measuring practice.

# domus stay.

Please don't hesitate to get in touch if you have any questions or require any further information.

[hello@domusstay.com](mailto:hello@domusstay.com)

+44 (0)20 8168 8880

Domus Stay provides the perfect combination of property, place and personal service for the world's most remarkable people. If you have any questions, or if we can help in any way, please contact us on the above number. Be it about a property you have, a property you want, dates to check or any special requirements you may need, we'd love a chat.

