

domus  
stay.

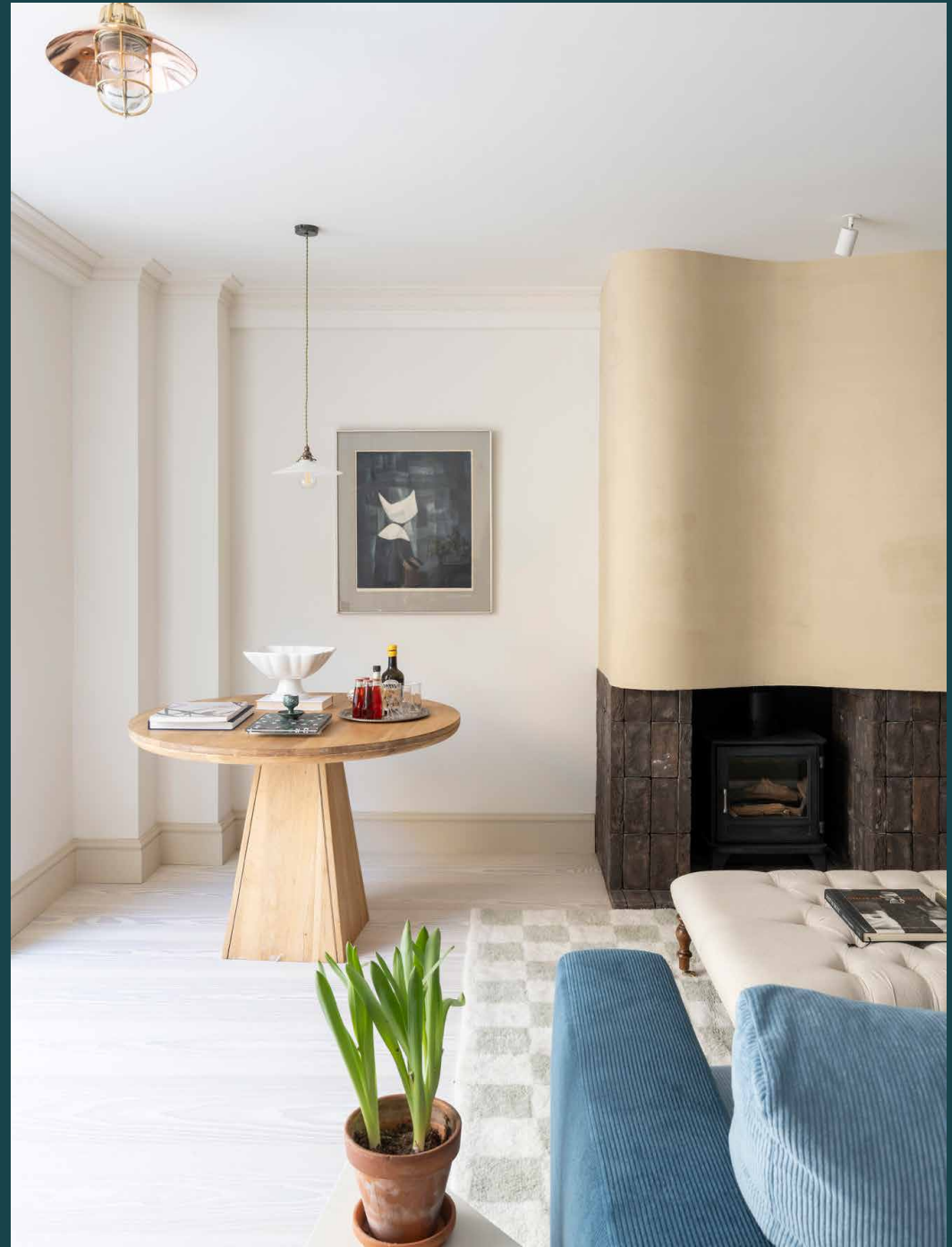
---

## Bassett Road III

North Kensington W10

3 Bedrooms, 3 Bathrooms  
For 5 guests

---





A fusion of timeless elegance and contemporary flair, this three-bedroom garden apartment sits on a coveted North Kensington street.

Arranged across the garden level, a meticulously crafted period conversion awaits. At the heart of the home, minimalism meets meticulous attention to detail in a light-flooded reception room, where an inviting sofa provides the ultimate spot to kick back. Restrained design draws a soothing backdrop, while a bespoke brick and limewash fireplace forms a striking centrepiece. Sweeping throughout, Douglas Fir wooden floors exude warmth underfoot, complemented by underfloor heating.

There's a sense of separation to the adjoining kitchen, where subtle shades of pink and green create a culinary setting with character. Fisher & Paykel appliances, including an electric induction hob and an American-style double fridge and freezer, marry form with function. Flowing seamlessly from the kitchen, a dining area invites indoor-outdoor living. An entertaining space for all seasons, it leads to a split-level Mexican-inspired garden courtesy of two sets of bifold doors. A northeast-facing patio makes for the ideal spot to take advantage of London's sunnier mornings, complete with outdoor furniture and an array of potted plants.







A pristine patio serves as a seamless extension of the living spaces, providing a leisurely spot for al fresco dining.



“

Soothing tones, uplifting proportions and considered design contribute to a serene atmosphere.









Back inside, three bedrooms are individual oases of calm. A soothing colour palette adorns the principal bedroom, complete with bespoke fitted storage and a large plush bed. A sophisticated Zellige-tiled en suite with a bathtub accompanies it, perfect for leisurely soaks. Two further bedrooms are dressed in muted shades of green and blue, one of which is served by an en suite bathroom finished in micro-cement.

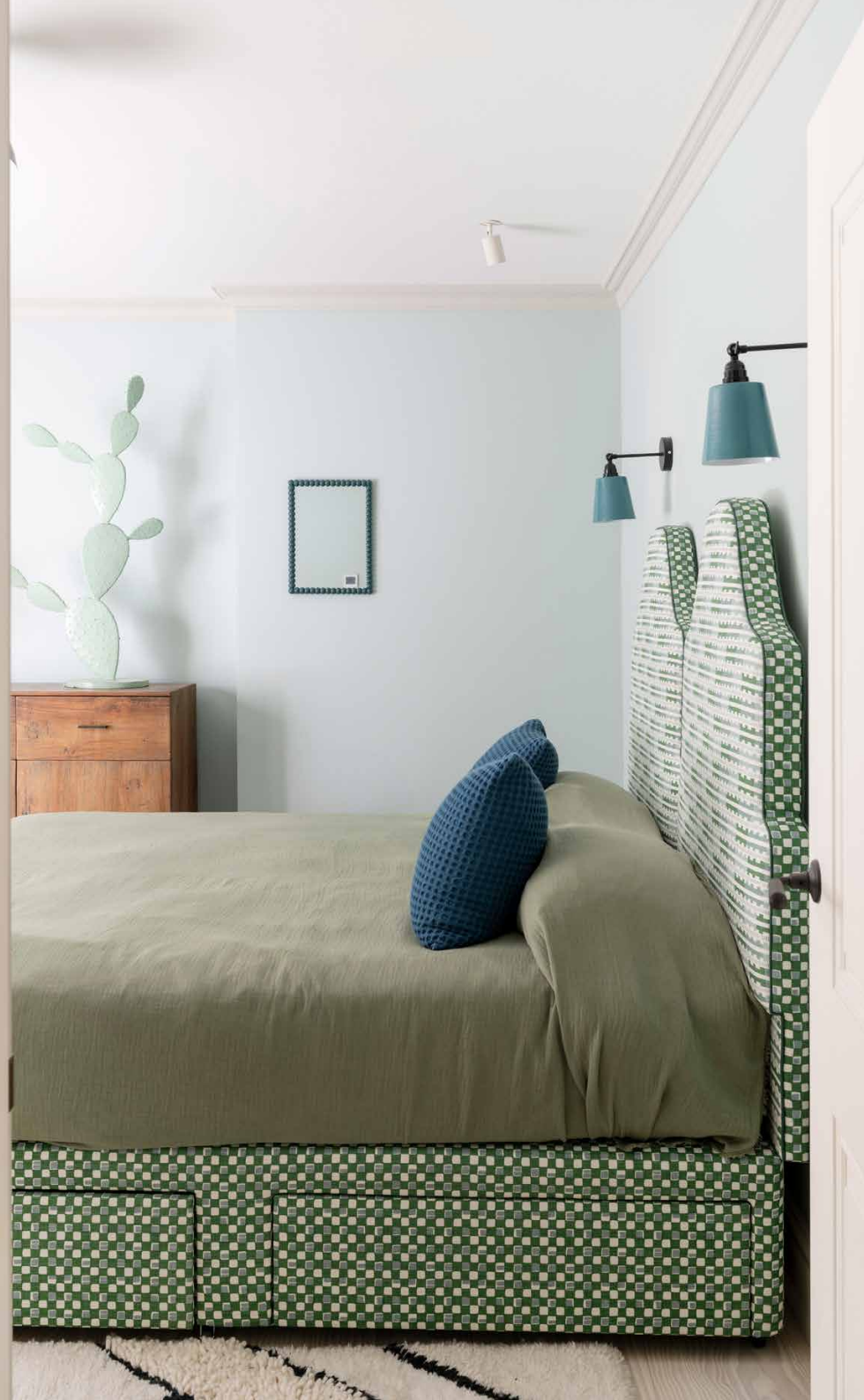






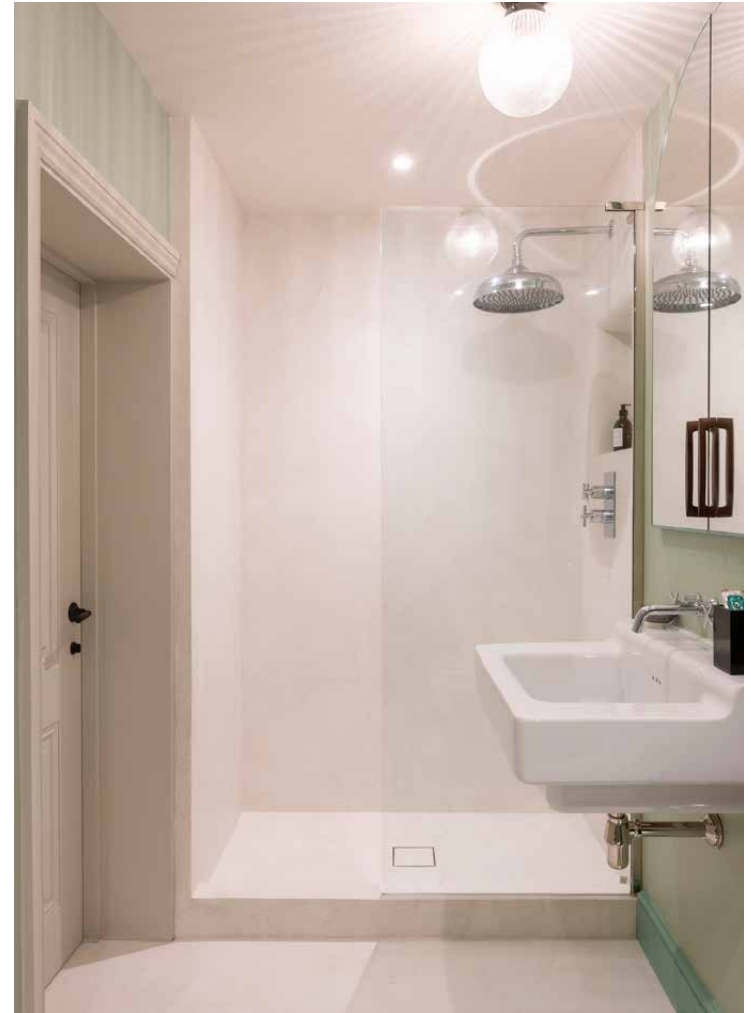








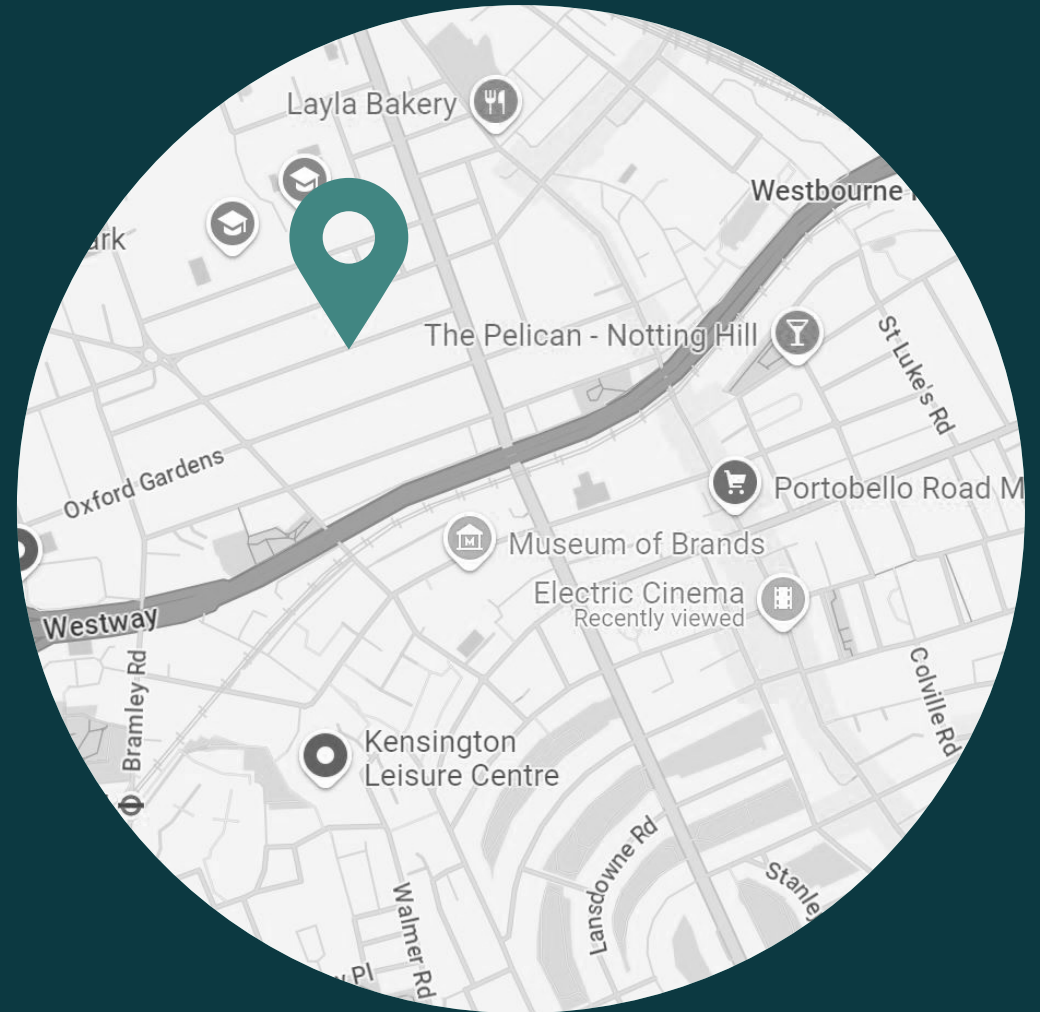




## LOCATION

A sought-after North Kensington setting, Bassett Road places you moments from local hotspots like Portobello Road.

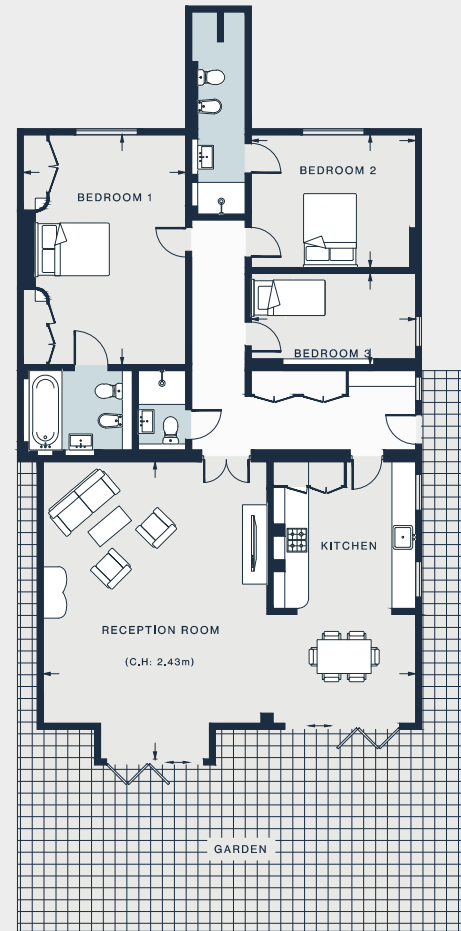
Visit the famous market in the mornings, then spend time discovering the area's sights. Layla's Bakery is only a six-minute walk away or stop at Golborne Deli to grab groceries. Take a stroll to The Pelican for an afternoon drink or dine at Straker's or Caia on nearby Golborne Road. Westbourne Grove is lined with independent boutiques to keep you busy or Ladbrooke Grove station – reached in five minutes – can take you wherever you need to go.





### PROPERTY HIGHLIGHTS

- Penthouse with high ceilings
- Open-plan reception room
- Master suite with freestanding bath
- Further en-suite bedroom
- Adjoining terrace
- Unique design features
- Exposed wooden beams
- Light and airy



LOWER GROUND FLOOR

RECEPTION ROOM /  
KITCHEN  
30'10 x 24'8 (9.4m x 7.5m)

BEDROOM 1  
18'11 x 13'5 (5.7m x 4.0m)

BEDROOM 2  
13'7 x 11'1 (4.1m x 3.3m)

BEDROOM 3  
13'6 x 7'8 (4.1m x 2.3m)

Approx. Gross Internal Area = 1618 sq ft / 150.3 sq m

Floor plans are for illustrative purposes only and not to scale. Compliant with RICS code of measuring practice.



Please don't hesitate to get in touch if you have any questions or require any further information.

---

[hello@domusstay.com](mailto:hello@domusstay.com)

+44 (0)20 8168 8880

Domus Stay provides the perfect combination of property, place and personal service for the world's most remarkable people. If you have any questions, or if we can help in any way, please contact us on the above number. Be it about a property you have, a property you want, dates to check or any special requirements you may need, we'd love a chat.

