

domus  
stay.

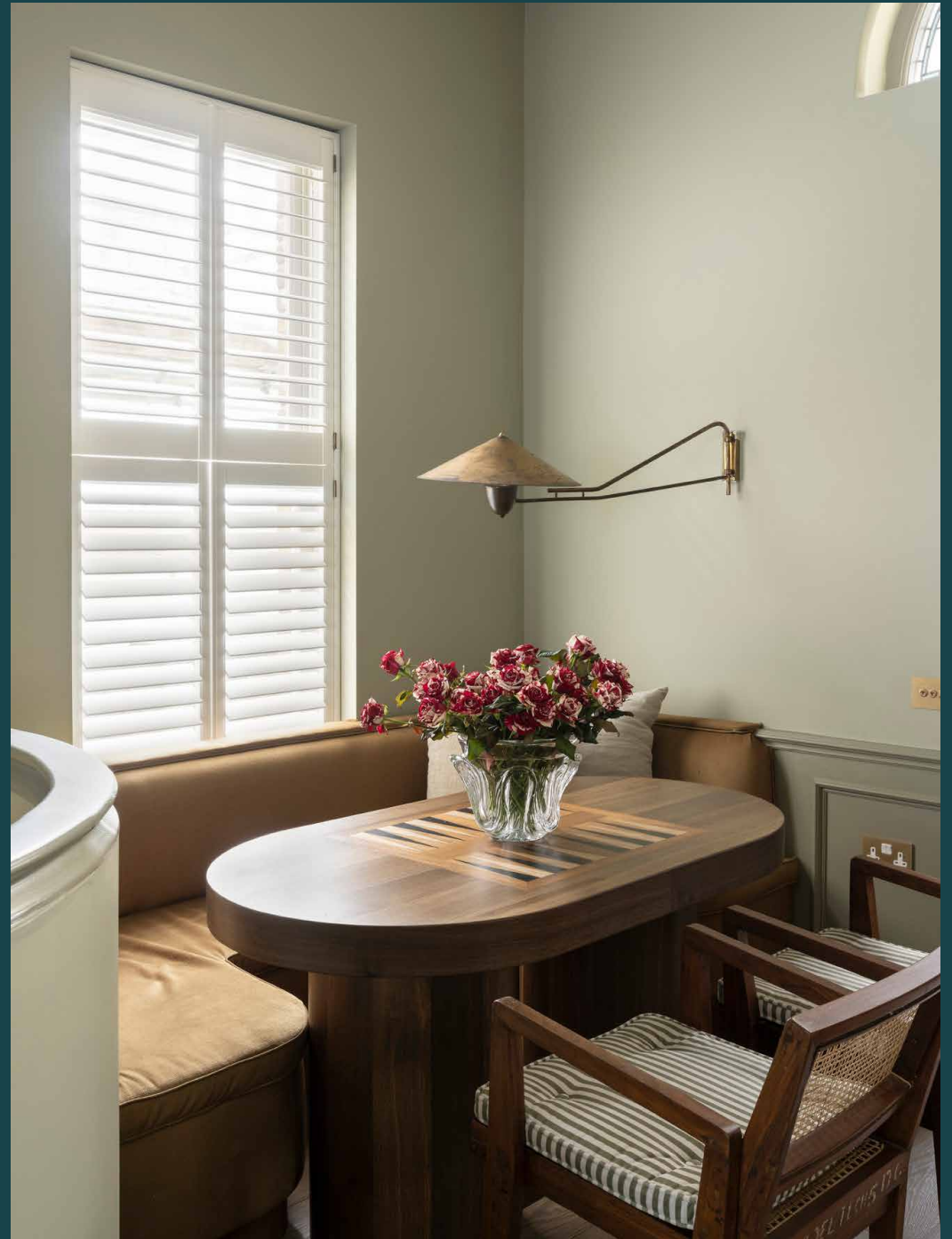
---

## Pembridge Place

Notting Hill W2

2 Bedrooms, 2 Bathrooms  
For 4 guests

---





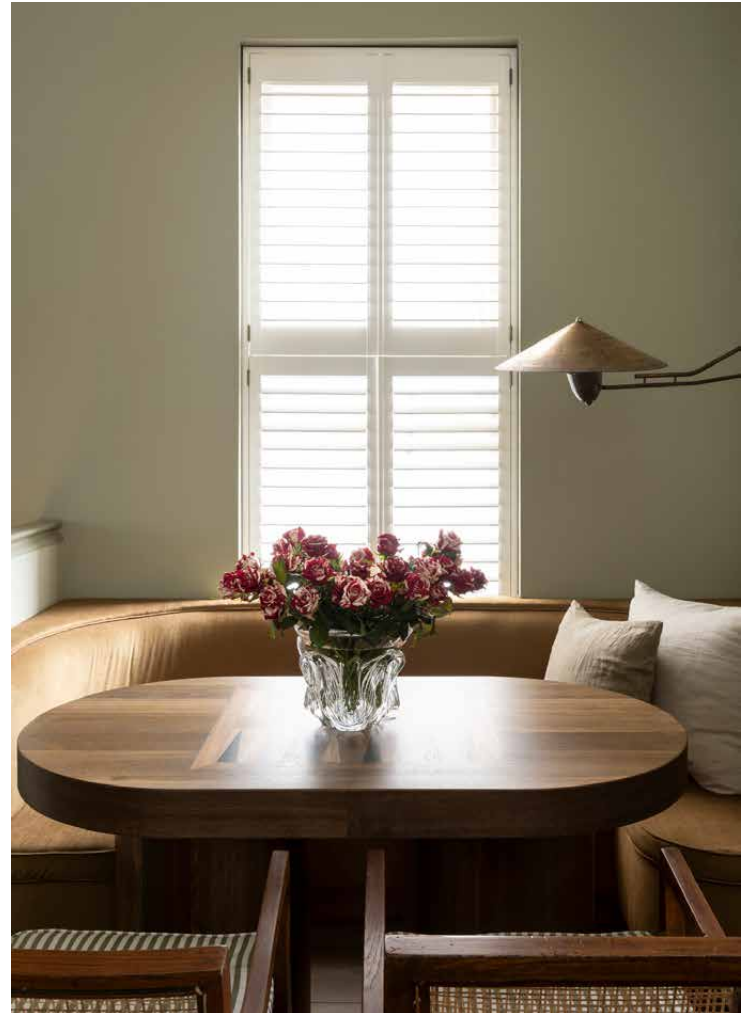
A statement-making two-bedroom duplex apartment in Notting Hill filled with characterful features. As stylish and elegant as its setting.

Sitting just off Westbourne Grove, this considered apartment puts you in walking distance of the neighbourhood's most celebrated restaurants, cafés and boutiques. Close to the action, it's also a peaceful space to switch off.

Characterised by statement notes and a period aesthetic, the open-plan living area features tonal furniture, a contemporary fireplace and timeless wooden floors. Wainscoting spans the walls, while the ceiling is crowned with intricate corning and an ornate rose that takes centre stage. Full height sash windows capitalise on the room's west-facing position, drawing in natural light. Cosy evenings in play out around the banquette seating; the dining table features a backgammon board for post-dinner games. The mirror – an Ettore Sottsass design – brings a hint of the seventies and a splash of added playfulness.

A whimsical stained-glass window sits above the entrance to the separate kitchen, finished in darker tones with burgundy tiles and cabinets. Gold hardware brings a striking finish to the Shaker-style units, which come fully equipped with all the necessary appliances.







A spiral staircase connects the living space to the bedrooms on the lower floor. The principal bedroom features ample fitted storage that keeps things streamlined and soothing, together with a neutral colour palette. The en suite bathroom is finished in earth-toned tiles. Complete with a deep bathtub and gold hardware, it offers a touch of elegance.

The second bedroom is just as considered with rich burgundy curtains dividing the bed from the rest of the room. Storage is in ample supply and a desk can be found in the second half of the room – a versatile addition that could be useful for any home working. The family bathroom takes a more contemporary turn, with textured blue walls and a rainfall shower.













## LOCATION

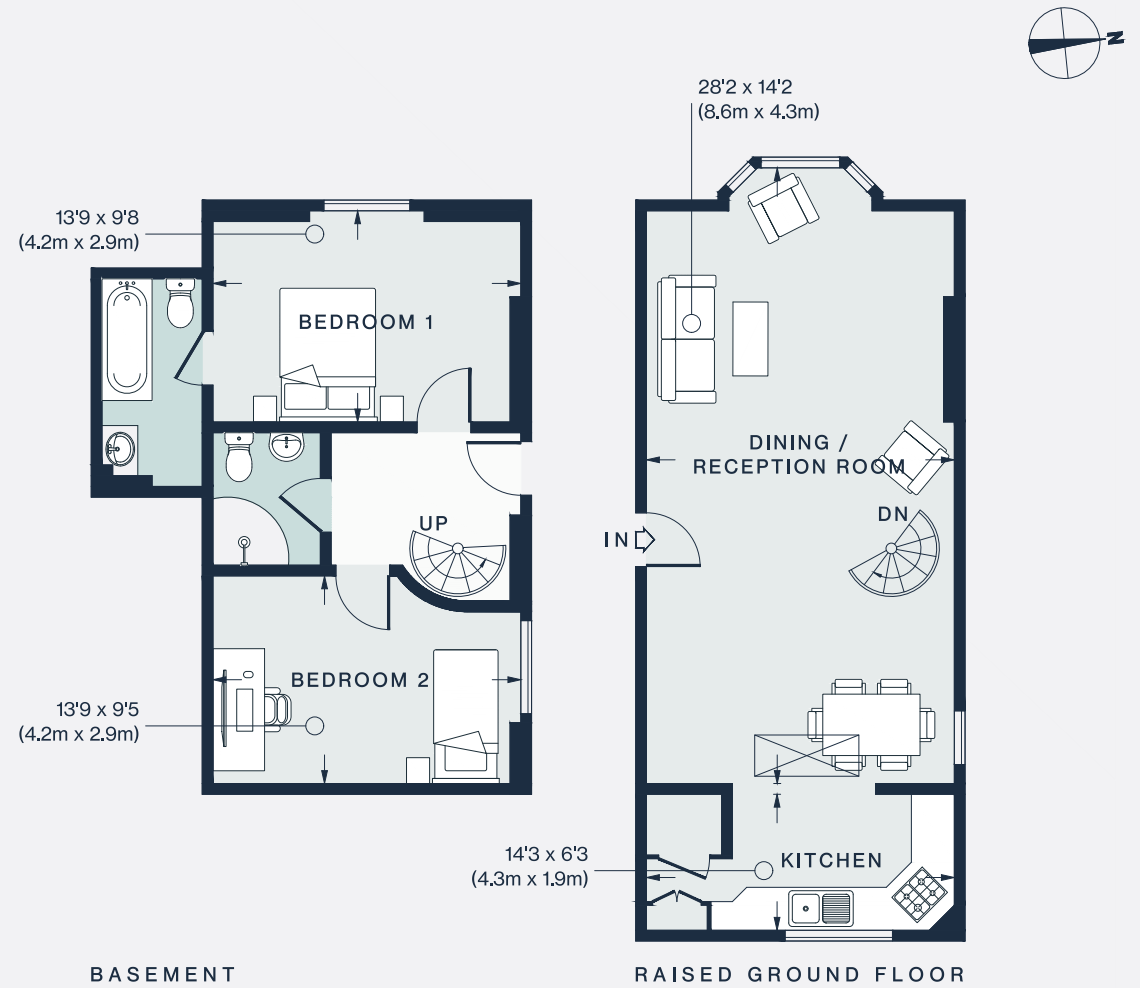
Just around the corner from the beating heart of Notting Hill, Pembridge Place is in strolling distance of the best of everything.

Nearby Westbourne Grove combines an array of upscale boutiques, cafés and restaurants. Grab essentials from Daylesford Organic, brunch at Granger & Co. then browse the rails at Sézane or Reformation. For antiques and vintage fashion, wander to Portobello Road. In the mood for fine dining? Choose between Michelin-starred restaurants Dorian, The Ledbury or Core by Clare Smyth. Alternatively, opt for sushi from Endo Kazutoshi's Sumi and be home in two minutes.



### PROPERTY HIGHLIGHTS

- Open-plan living and dining room
- Contemporary kitchen
- Principal bedroom suite
- Guest bedroom with desk
- Family bathroom
- The Royal Borough of Kensington & Chelsea



Approx. Gross Internal Area = 898 sq ft / 83.5 sq m

Floor plans are for illustrative purposes only and not to scale. Compliant with RICS code of measuring practice.



Please don't hesitate to get in touch if you have any questions or require any further information.

---

[hello@domusstay.com](mailto:hello@domusstay.com)

+44 (0)20 8168 8880

Domus Stay provides the perfect combination of property, place and personal service for the world's most remarkable people. If you have any questions, or if we can help in any way, please contact us on the above number. Be it about a property you have, a property you want, dates to check or any special requirements you may need, we'd love a chat.

