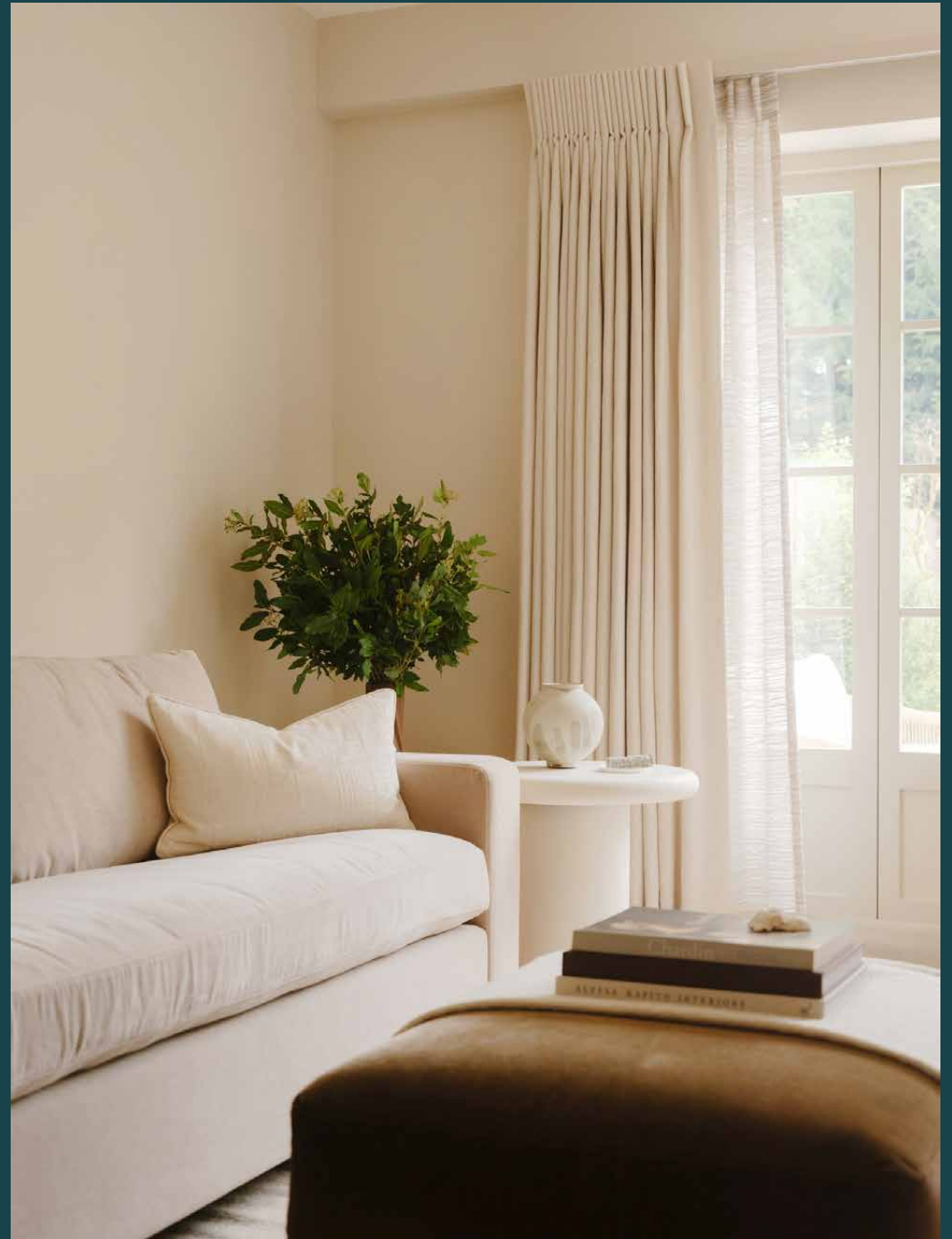


domus
stay.

The Avenue

The Avenue W4

4 Bedrooms, 3 Bathrooms
For 8 guests





Neutral tones and considered design details make this reimagined Chiswick home a sanctuary of calm.

On a tree-lined street in leafy Chiswick, The Avenue is a tranquil oasis where organic textures and soft hues have been carefully curated by interior designers Murudé. Across three floors, a distinctive aesthetic is defined by bespoke furnishings and considered design.

Through double doors, the entryway opens into an elegant kitchen, where a Calacatta Viola marble waterfall island creates an eye-catching centrepiece. Sleek cabinetry with gold hardware, a Quooker boiling water tap and a striking stainless steel Lacanche range combine to create the ultimate culinary setting. The kitchen melds into a cosy and considered dining room, where a table for six awaits evenings of entertainment.

Descending a couple of steps from the dining room, the living room is a haven of refinement and style. Natural light floods through floor-to-ceiling French doors and washes over bespoke furnishings.

The space exudes pared-back luxury, with sofas ready to sink into. Outside, an immaculately manicured garden is peppered with outdoor furniture, ready for sunnier days and al fresco hosting.

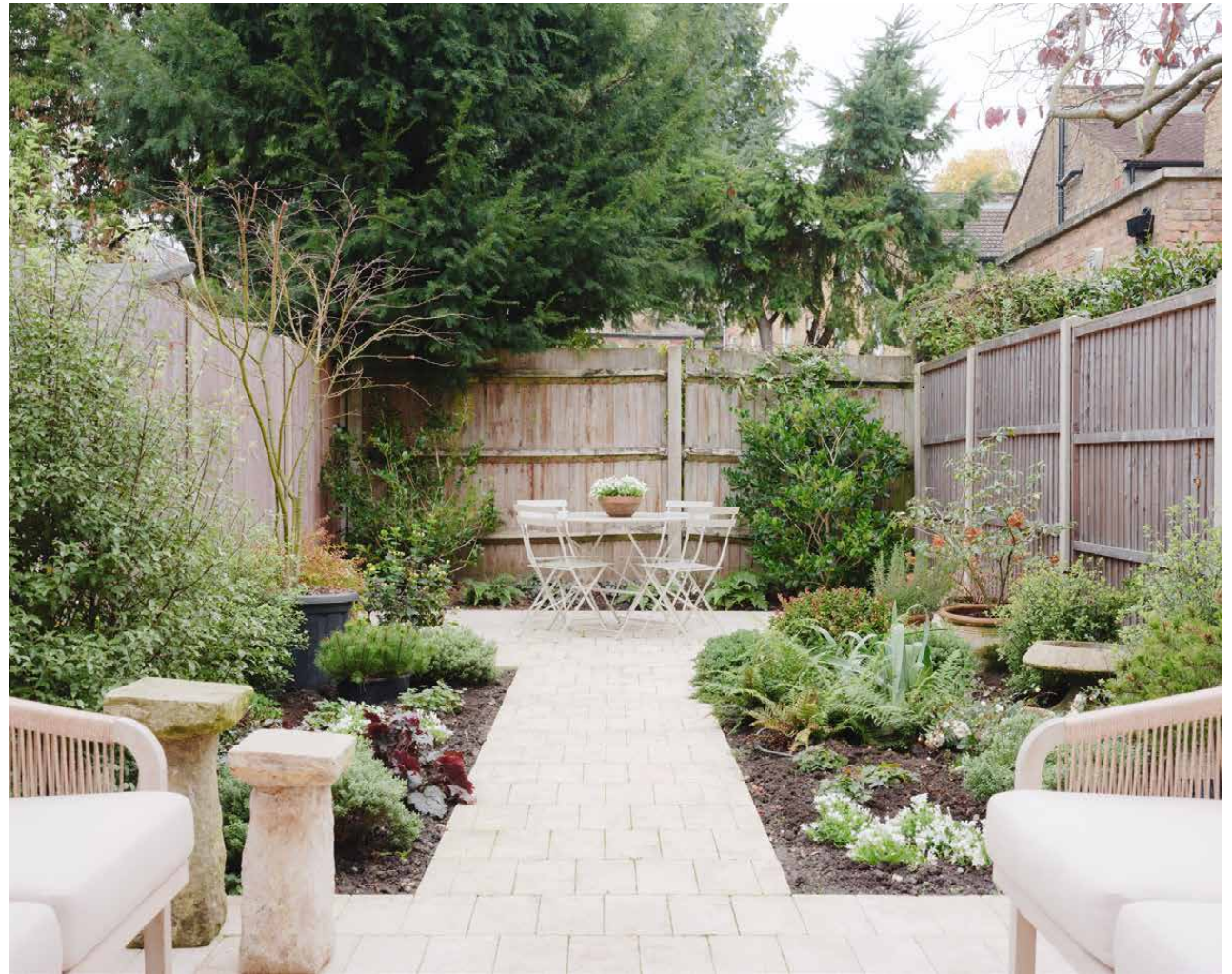


Natural light floods through floor-to-ceiling French doors and washes over bespoke furnishings. The space exudes pared-back luxury, with sofas ready to sink into.

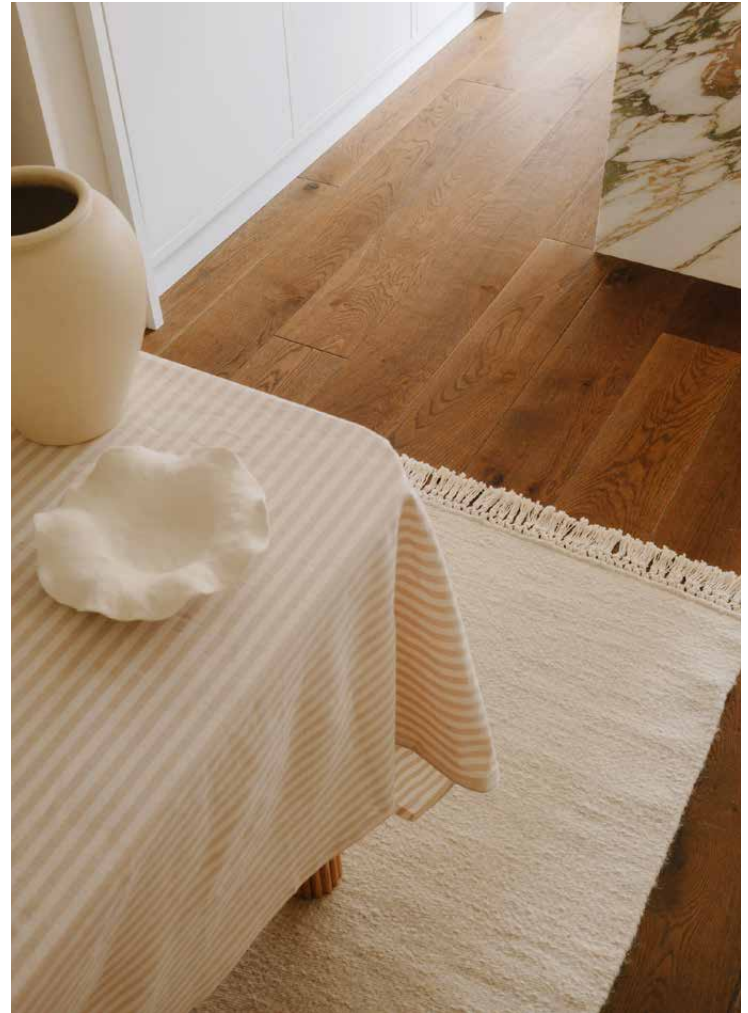


“

A manicured private garden lends itself to al fresco entertaining during the sunnier seasons.











Back inside, the same calm and considered feeling continues across the first- and second- floor sleeping quarters. Uplifting shades of pale peach and cream welcome you into the principal bedroom suite, where a super king-sized bed dominates the space. Sash windows with floor-to-ceiling curtains along with custom made furnishings, create an ideal space to kick back in. A dressing room gives way to the en suite bathroom, where dainty gold hardware complements unique Calacatta marble and Zellige tiles – a thoroughly enticing setting.

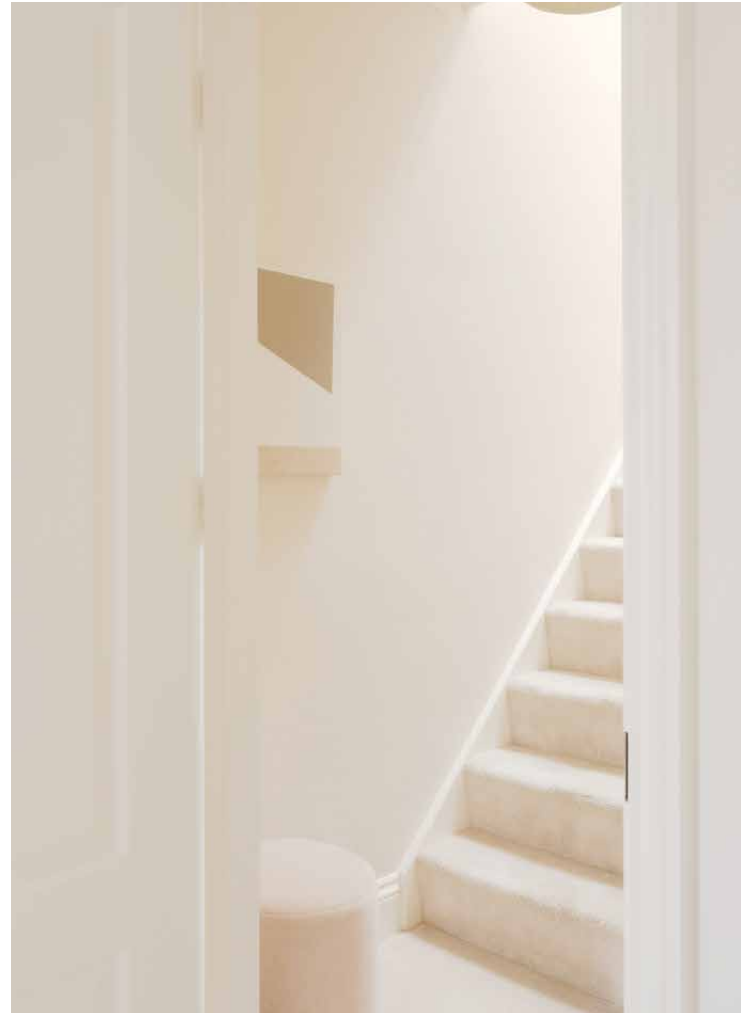
The same soothing colour palette sets the tone in a guest bedroom, accompanied by a stylish family bathroom filled with thoughtful details. On the top floor, two further bedrooms – one of which enjoys its own en suite shower room – unfold complete with locally sourced vintage furniture.



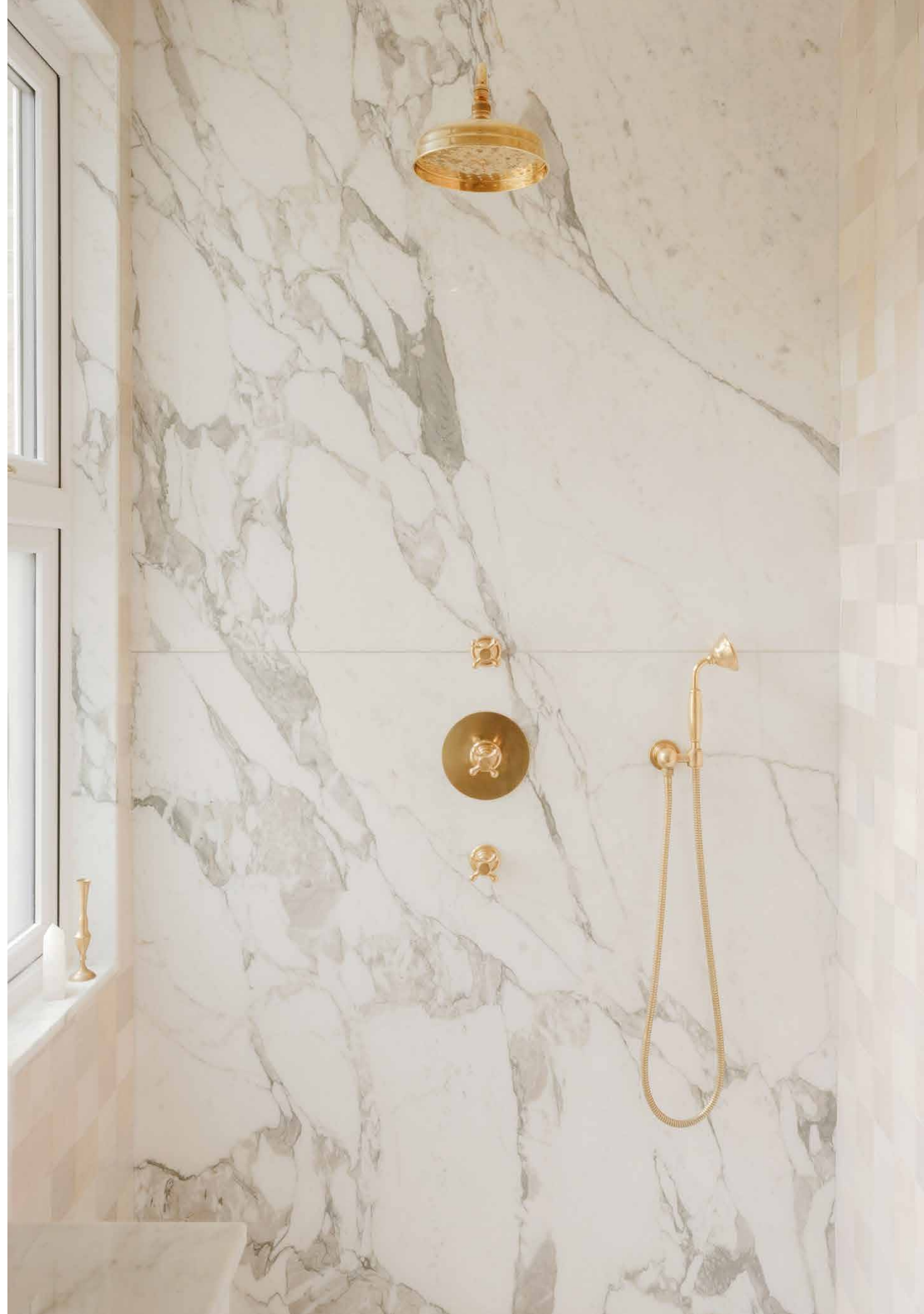




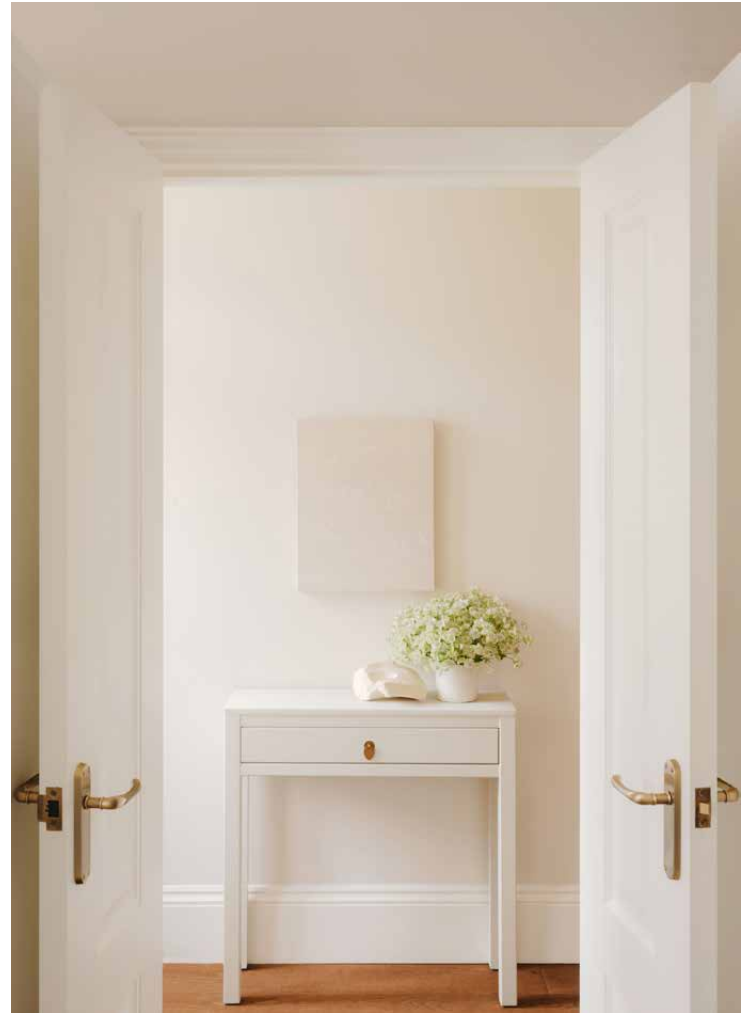












LOCATION

A picturesque residential spot, The Avenue offers both privacy and easy proximity to Chiswick's hotspots.

Chiswick High Road is a comfortable walk away, where a wealth of shops, cafés and traditional pubs await. Grab a coffee from Gail's, then enjoy a stroll around leafy Turnham Green. Stop by Foster Books to browse the selection of first editions and rare finds, then head to Villa di Geggiano for a taste of Tuscany in a charming Italian-inspired setting.



PROPERTY HIGHLIGHTS

- Interior design by Murudé
- Open-plan kitchen and dining room
- Reception room
- Principal bedroom suite with dressing room
- Guest bedroom suite
- Two further bedrooms
- Family bathroom
- Cloakroom
- Private garden





Please don't hesitate to get in touch if you have any questions or require any further information.

hello@domusstay.com

+44 (0)20 8168 8880

Domus Stay provides the perfect combination of property, place and personal service for the world's most remarkable people. If you have any questions, or if we can help in any way, please contact us on the above number. Be it about a property you have, a property you want, dates to check or any special requirements you may need, we'd love a chat.

