

domus
stay.

Fifth Avenue

Queen's Park NW10

3 Bedrooms, 2 Bathrooms
For 6 guests





Creative character brings a joyful feel to this cottage-style home in Queen's Park.

Found at the heart of the Queen's Park Estate, a charming townscape is the backdrop for this Grade-II listed, three-bedroom house. Encapsulating the spirit of its community-minded setting, interiors here are styled to uplift.

Energising traditional design with contemporary flair, the home's living spaces embody a unique character. Enter on the ground floor, separated between a double reception room and open-plan kitchen. Evenings play out in the lounge, where a cosy quality is curated with deep navy hues. Light up the log burner and utilise the HiFi speakers; the mounted TV is prepped for movie marathons. Through to the home's social heart, an eat-in kitchen is enlivened with a bright pastel palette. Everything from artwork to amenities is considered here – a Sage Espresso machine, bespoke Banquette seating and a sky-lit dining area. Beyond, the patio garden features a Weber BBQ – perfect for gathering friends in summer.





Design details are thoroughly considered at Fifth Avenue, from woven Pelican House pieces to original Tommy Clarke artwork.



“

Through to the home's social heart, an eat-in kitchen is enlivened with a bright pastel palette. Everything from artwork to amenities is considered here.





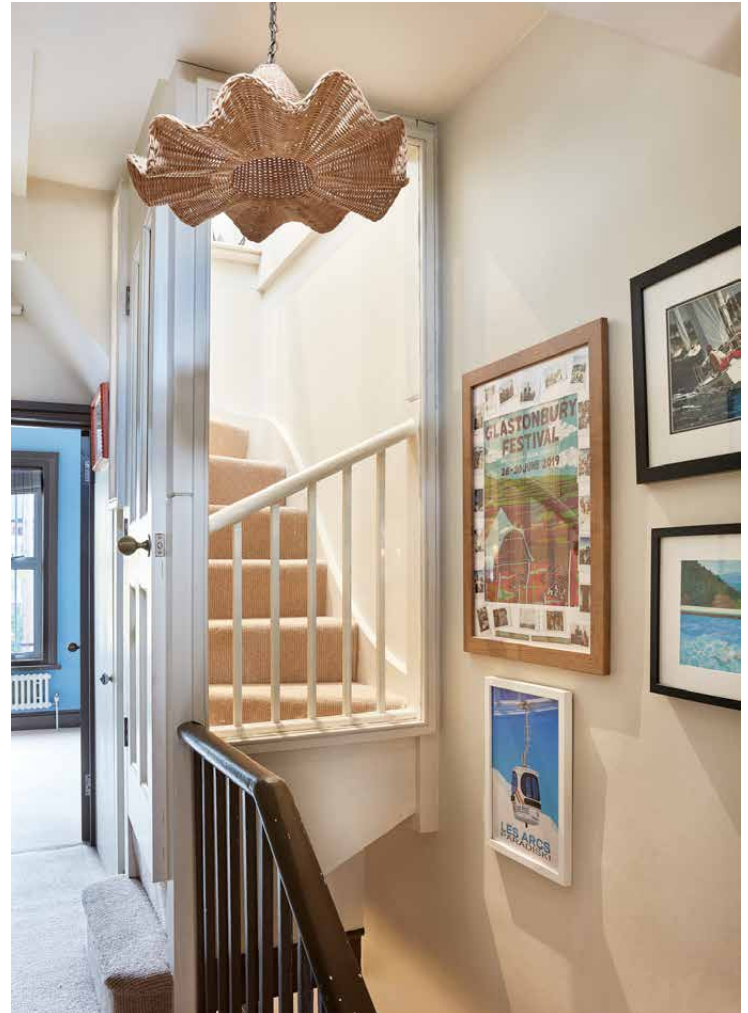




Three bedrooms are found across the upper floors. In the principal, warm blue walls and original woven art by Pelican House lends a sunny disposition. A second bedroom on the same level – currently set up as a study – features vibrant striped walls and captivating artwork. The third bedroom takes the home's top floor; a peaceful setting with a neutral palette. All bedrooms share access to an Italian-inspired bathroom – all Mandarin Stone marble tiling and bright Farrow and Ball tones. Refresh in a spacious rainfall shower or spend an evening unwinding in the bathtub.















LOCATION

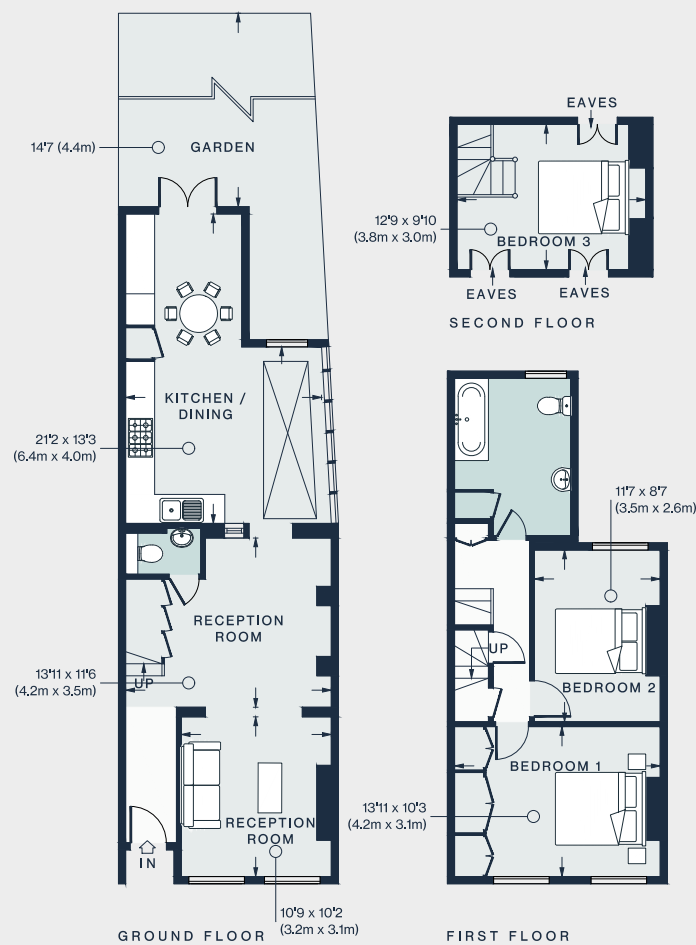
A neighbourhood renowned for its sense of community, there's a welcoming feel surrounding Fifth Avenue.

Start your day with a healthy bowl from Açai Carioca, followed by a leisurely stroll around the area's namesake green space – a dose of escapism any day of the week. On Sundays, shop for fresh produce at Queen's Park Farmers' Market. For a special celebration, book a table for dinner at welcoming local spot Carmel. End the evening with a spot of culture at the Lexi, a neighbourhood cinema run by volunteers. Your springboard to the city, Queen's Park station is just 10 minutes' walk away.



PROPERTY HIGHLIGHTS

- Double reception room
- Open-plan kitchen and dining room
- Principal bedroom with bespoke storage
- Two further bedrooms
- Family bathroom
- Cloakroom
- Patio Garden



Approx. Gross Internal Area = 1102 sq ft / 102.3 sq m

Floor plans are for illustrative purposes only and not to scale. Compliant with RICS code of measuring practice.

domus stay.

Please don't hesitate to get in touch if you have any questions or require any further information.

hello@domusstay.com

+44 (0)20 8168 8880

Domus Stay provides the perfect combination of property, place and personal service for the world's most remarkable people. If you have any questions, or if we can help in any way, please contact us on the above number. Be it about a property you have, a property you want, dates to check or any special requirements you may need, we'd love a chat.

