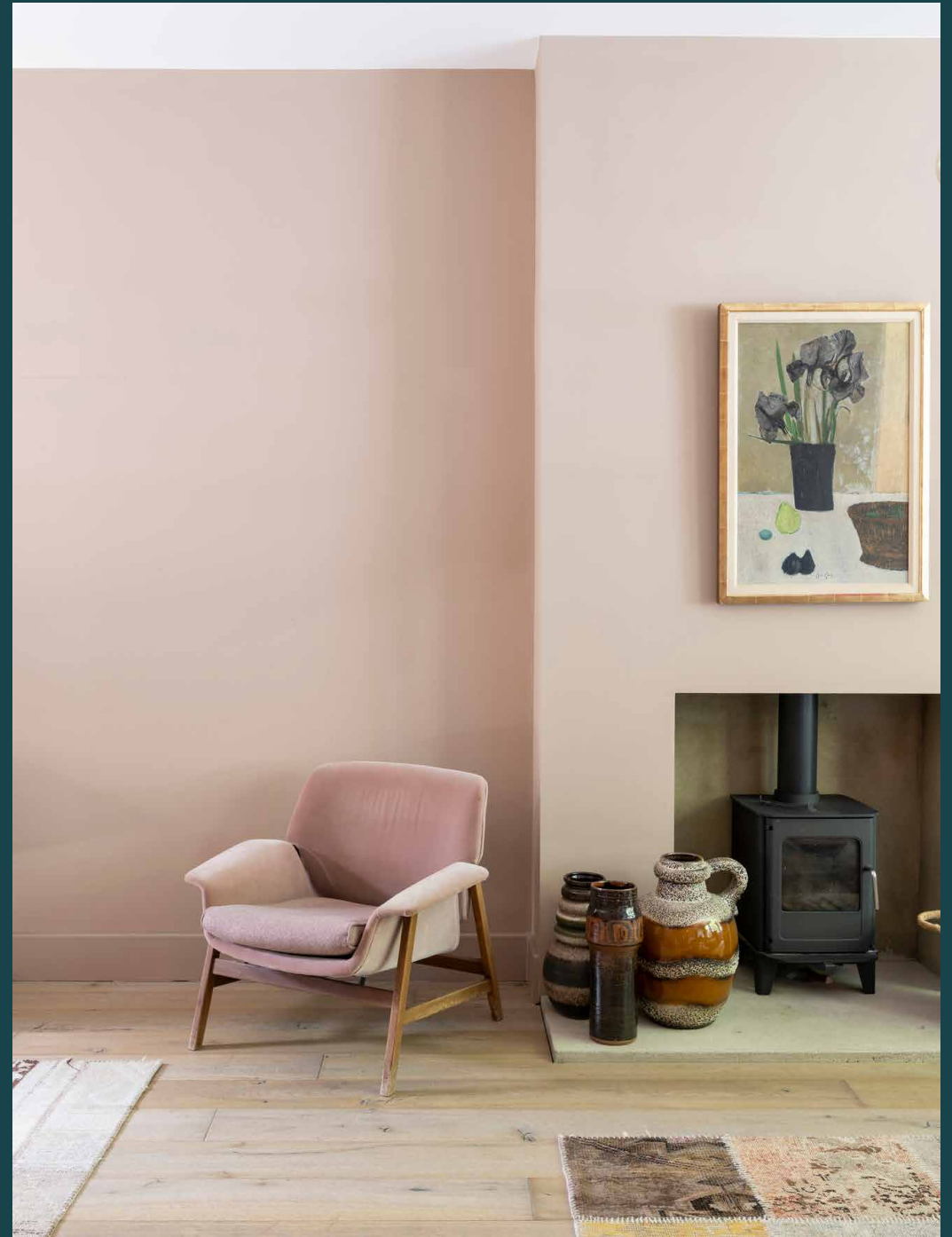


domus
stay.

Kingsbridge Road

North Kensington W10

4 Bedrooms, 3 Bathrooms
For 8 guests





An echo of its verdant setting, this head-turning, four-bedroom home draws the outside in.

A home that takes cues from its tranquil North Kensington setting, Kingsbridge Road marries a modern aesthetic with hints of heritage charm.

Welcoming with warm beige hues and an uplifting light, there's an effortless simplicity to the double reception room. A restrained canvas enriched with characterful touches – grab a page-turner and settle down for the day in front of the log burner.

The social heart of the home unfolds at the rear, a voluminous open-plan kitchen, dining and reception room. A space of impressive proportions, its lofty ceiling is accentuated by an elongated skylight. Drawing light down across a kitchen comprised of smooth stone counters and tonal tiles, this culinary setting is designed to captivate. Elsewhere, minimal artwork retains focus on the room's pièce de résistance – a wall of glazing framing verdant views. Just draw back the glass to seamlessly integrate the space with a patio and leafy lawn beyond.





A sprawling open-plan living area, plus a double reception room, allows space for the family to unwind or entertain.

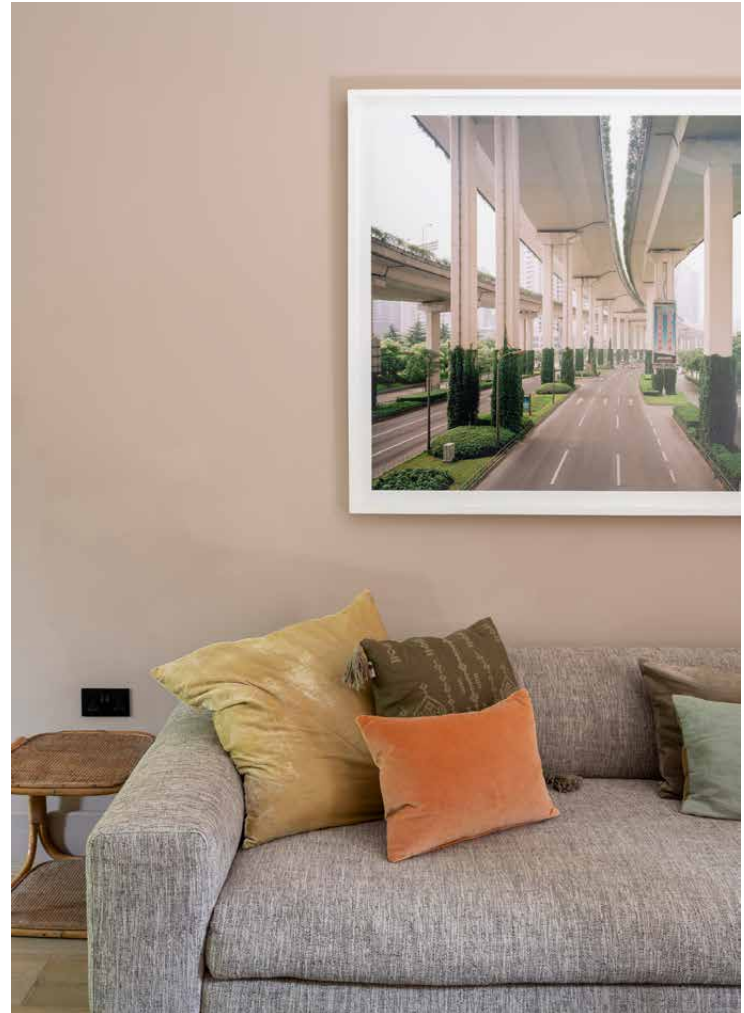


“

Drawing light down across a kitchen comprised of smooth stone counters and tonal tiles, this culinary setting is designed to captivate.







Sleeping quarters are set across the upper levels, with a peaceful principal bedroom suite to the front of the first floor. A space to switch off – light floral touches and shiplap walls lend a countryside aesthetic. Enjoy access to a dedicated dressing space, plus an equally considered en suite bathroom, with a mosaic tile floor, dual vanity and a bathtub. Three further bedrooms embrace a soothing colour palette, served by a family bathroom and shower room.













LOCATION

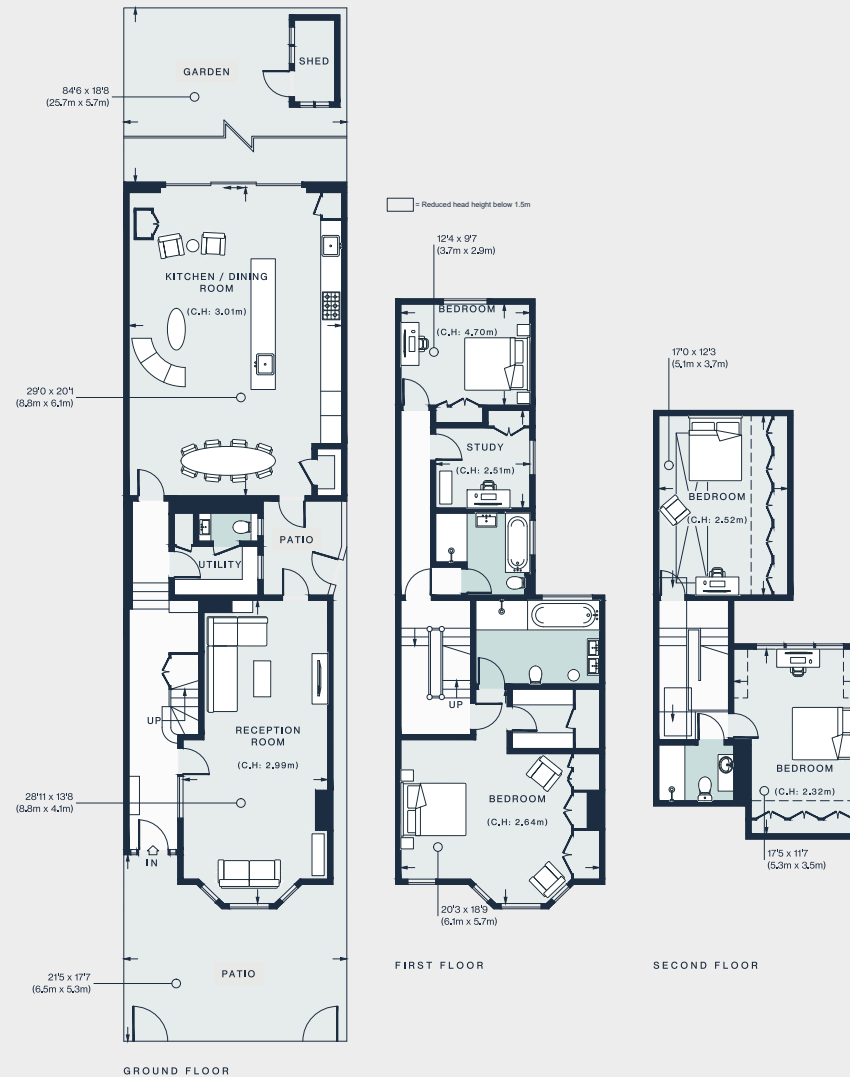
There's a community feel to North Kensington, where the streets are lined with period architecture and leafy trees.

A place to press pause in a thrumming capital. Yet, you're never far from some of West London's notable hotspots. White City House and Westfield are within walking distance or head to Westbourne Grove for creative boutiques and chic cafes, from Granger & Co to Daylesford Organic. Enjoy mornings on Portobello Road, and evenings at the Electric Cinema.



PROPERTY HIGHLIGHTS

- Open-plan kitchen, dining and reception room
- Double reception room
- Principal bedroom suite with dressing room
- Three further bedrooms
- Family bathroom
- Shower room
- Study
- Utility room
- Patio
- Private garden



Approx. Gross Internal Area = 2,576 sq ft / 239,3 sq m
(Excluding Shed)

Floor plans are for illustrative purposes only and not to scale. Compliant with RICS code of measuring practice.



Please don't hesitate to get in touch if you have any questions or require any further information.

hello@domusstay.com

+44 (0)20 8168 8880

Domus Stay provides the perfect combination of property, place and personal service for the world's most remarkable people. If you have any questions, or if we can help in any way, please contact us on the above number. Be it about a property you have, a property you want, dates to check or any special requirements you may need, we'd love a chat.

