

domus  
stay.

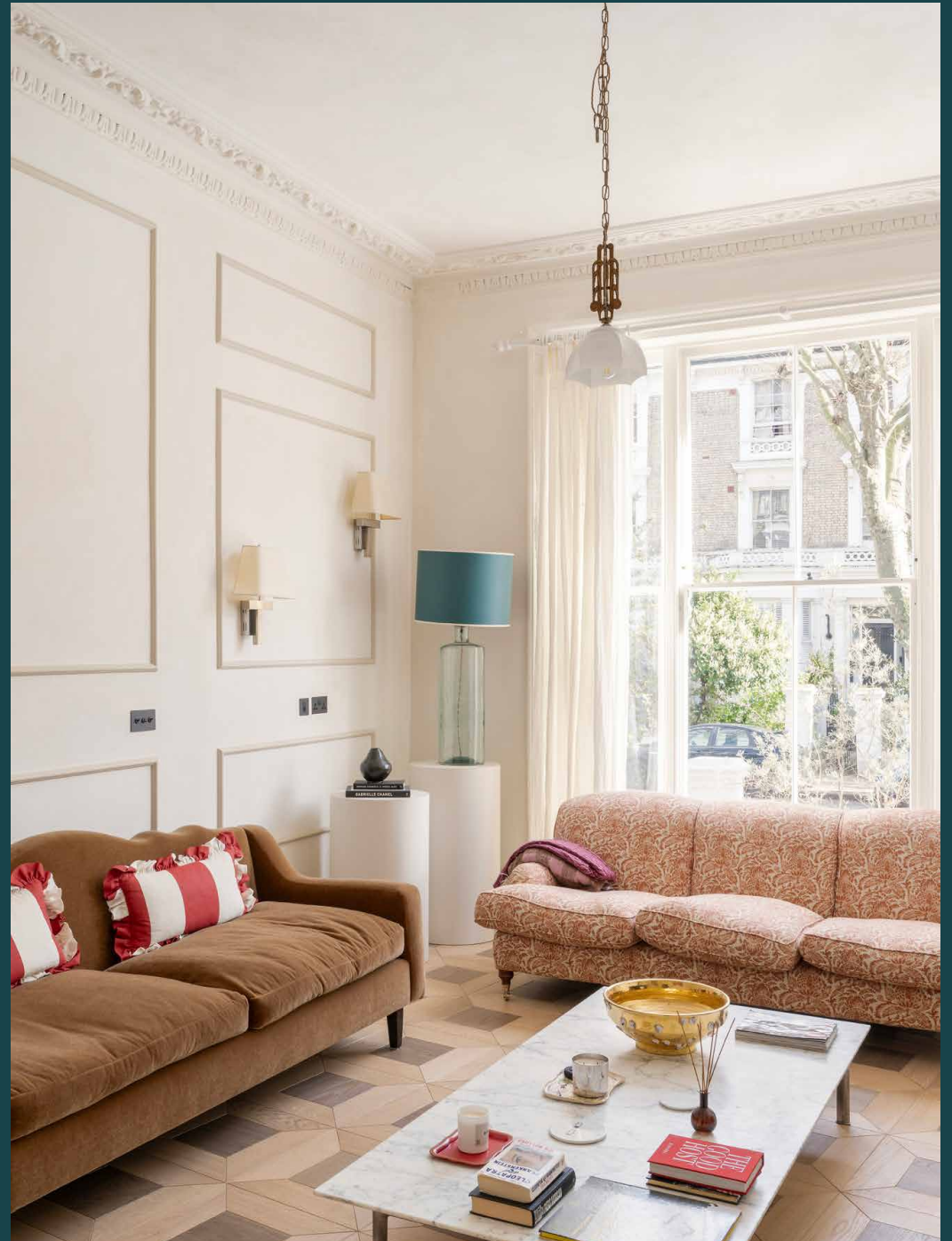
---

## Bassett Road

North Kensington W10

2 Bedrooms, 2 Bathrooms  
For 4 guests

---





## Touches of Mediterranean design create character at this two-bedroom apartment with grand heritage proportions.

On a sought-after North Kensington street, this blonde-brick villa benefits from a sense of privacy. Beyond its column-fronted portico, a lateral two-bedroom period conversion brings a sympathetic refresh to a traditional home.

Stepping directly into the home's social heart, a one-of-a-kind kitchen sits to one side of the double-fronted layout. Cooking, dining or socialising – there's an animated air courtesy of the room's colossal sash window. Calacatta marble splashbacks, volcanic rock counters and a bespoke extractor form a captivating culinary backdrop, while state-of-the-art appliances and a double oven enable effortless culinary adventures. Linen chandeliers add a layer of ambiance to the breakfast bar – a relaxed spot to linger over brunch.

In the reception room, a south-west-facing positioning washes natural light across a symphony of muted, earthy tones. Nestled between bedrooms to the opposite side, sky-lit sage tones bring calm to a cosy snug.



Abstract art by Ginette Fiandaca styles the walls, while a floral George Smith sofa offers a setting to admire the black marble fireplace.



“

Beyond its column-fronted portico, a lateral two-bedroom period conversion brings a sympathetic refresh to a traditional home.







Arranged across the rear of the apartment, two bedrooms are soothing in design. The spacious principal bedroom is all dusky hues and curving archways, featuring handmade bespoke storage and a super-King sized bed. Through an open archway, the indulgent en suite bathroom beckons with a generous bathtub and dual vanity.

A calming air continues through the second bedroom, a peaceful place to unplug served by a sophisticated shower room – think Zellige tiles, a concrete sink and micro-cement flooring.

The home additionally benefits from a study, plus underfloor heating throughout.









“

An interior that invites relaxation, peaceful tones and natural light work in harmony to create calm here.



## LOCATION

A sought-after North Kensington setting, Bassett Road places you moments from prime Notting Hill.

Visit the famous market in the mornings, then spend time discovering the area's best-kept secrets. Layla's Bakery is only a six-minute walk away or stop at Golborne Deli to grab groceries. Rub elbows with the well-heeled at three-Michelin-starred Core by Clare Smyth or head to Gold for a late-evening tippie. Westbourne Grove is lined with independent boutiques to keep you busy or Ladbrooke Grove station – reached in three minutes – can take you wherever you need to go.



#### PROPERTY HIGHLIGHTS

- Open-plan kitchen and dining room
- Reception room
- Principal bedroom suite
- One further bedroom
- Study
- Kids' snug
- Two shower rooms
- Royal Borough of Kensington & Chelsea





Please don't hesitate to get in touch if you have any questions or require any further information.

---

[hello@domusstay.com](mailto:hello@domusstay.com)

+44 (0)20 8168 8880

Domus Stay provides the perfect combination of property, place and personal service for the world's most remarkable people. If you have any questions, or if we can help in any way, please contact us on the above number. Be it about a property you have, a property you want, dates to check or any special requirements you may need, we'd love a chat.

