

domus  
stay.

---

## Boyne Terrace Mews

Holland Park W11

3 Bedrooms, 2 Bathrooms  
For 6 guests

---







In a quiet mews street, an uplifting feel is commanded by eclectic patterns, Crittall windows and bespoke finishes in this interior-designed three-bedroom home.

The quietude of Boyne Terrace Mews belies its close proximity to Holland Park Avenue; this charming cul-de-sac is nestled just behind the beloved high street, lined with mature trees and immaculately-presented properties.

For this three-bedroom mews home, its charcoal-toned window frames and stock brick exterior offers a precursor of the creative decoration within. Alongside the design visionaries at Cast Studio, the homeowners drew on some of London's most iconic venues – including 5 Hertford Street, Julie's and The Belvedere – for Boyne Terrace Mews' fashionable and eclectic interior scheme.

Pale wood floors laid in a herringbone pattern makes an eye-catching first impression as you enter the home. A spacious open-plan kitchen, dining and living room is a thoroughly uplifting setting, with a harmonious palette of colours and engaging contemporary artwork. Bespoke sage-green cabinets and marble worktops make for a stylish culinary setting, complemented by state-of-the-art appliances. Enjoy morning coffees at the central island and host dinners at the dining table, or curl up on the sofa with a new page-turner from one of the bookshelves.

Floor-to-ceiling Crittall windows add a bold, industrial edge to the refined space, which open out to the private garden beyond. It's the perfect place to make the most of London's sunny weather, complete with pot plants and a greenhouse at the rear.







Peace and quiet is guaranteed at Boyne Terrace Mews. This residential enclave is hidden away from the bustle of W11, despite being just minutes from some of the best restaurants and shops in the area.



“

Floor-to-ceiling Crittall windows add a bold, industrial edge to the refined space, which open out to the private garden beyond.













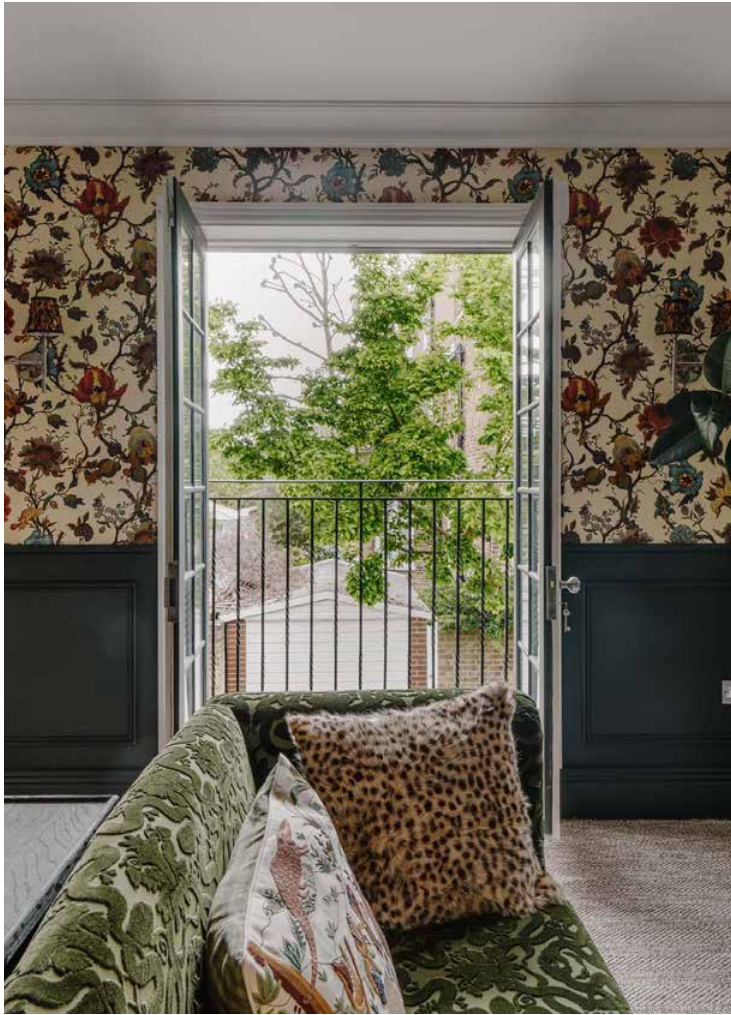
Upstairs, a formal reception room is vibrant with House of Hackney wallpaper and a jewel-green velvet sofa. French windows open to a Juliet balcony, welcoming in fresh air to the modish setting. There's a dedicated bar area next to the wood burner, keeping you well-equipped for cosy evenings in.



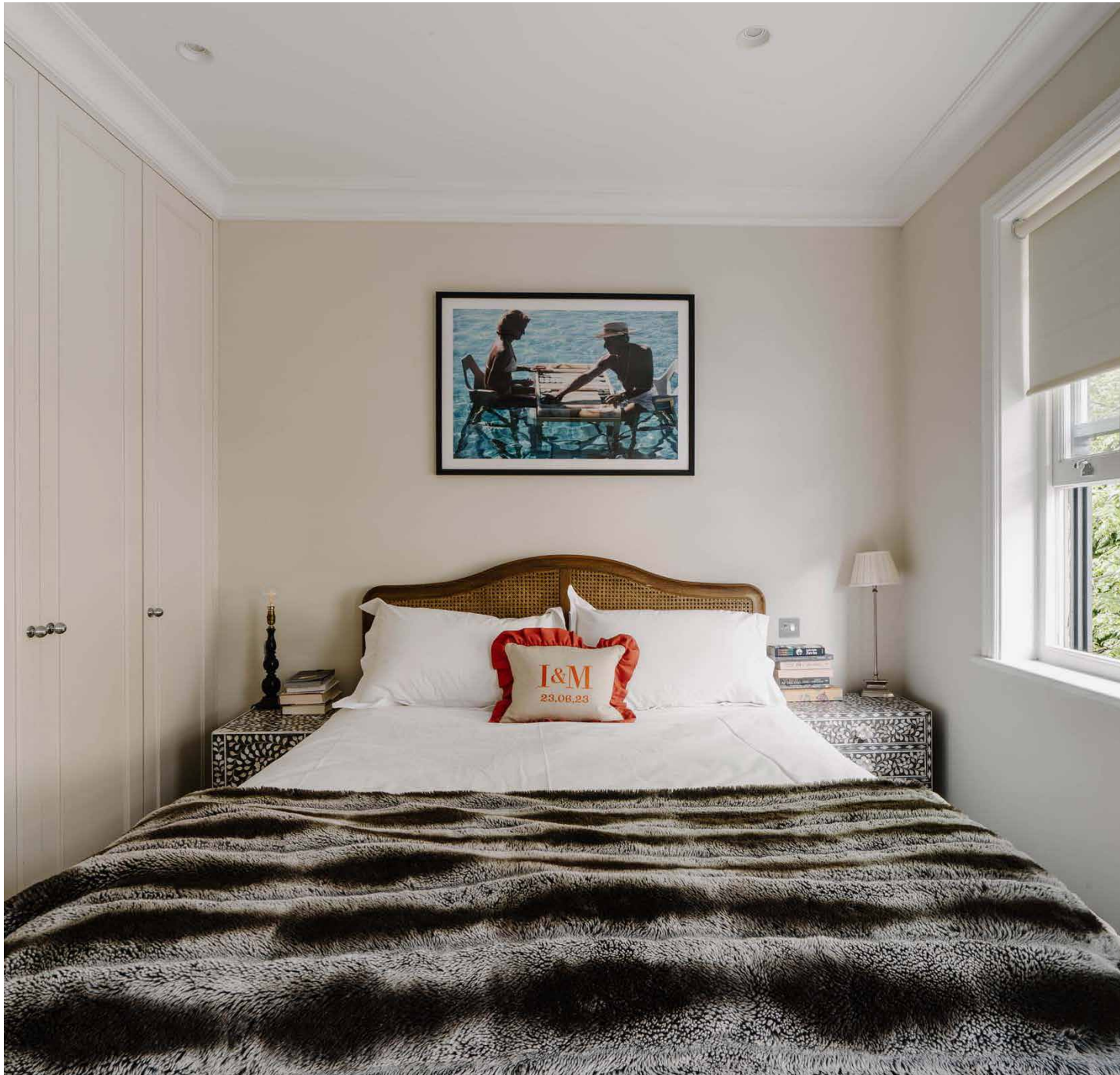








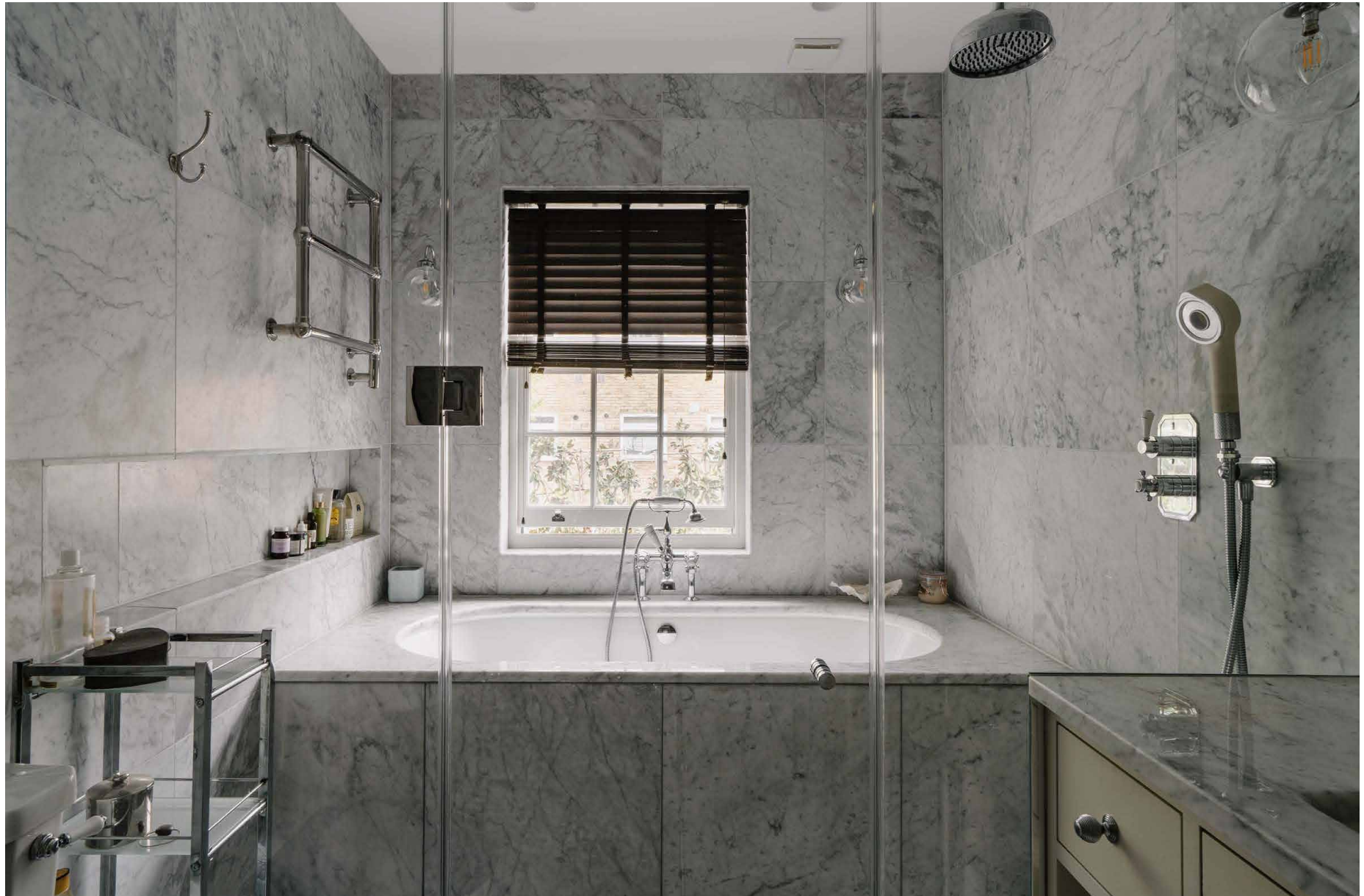




The principal bedroom is in every sense serene, with neutral tones and natural light filtered through a sash window. There's plenty of storage offered too, with floor-to-ceiling wardrobes lining one of the walls. It's served by a modern bathroom, with oversized marble tiles and a dual vanity, plus a 'wet room' configured with a rainfall shower and large bathtub.

Occupying the home's upper floor are two sophisticated light-filled rooms: to one side, a guest bedroom features an inviting bed and neat integrated wardrobes; to the other, a calming study doubles as an additional bedroom. These spaces enjoy a second bathroom, wrapped in bottle-green tiling. There's also an additional WC on the ground floor, with striking pillar box-red paint and bespoke wallpaper.





















NO. 10  
ING  
CO. LTD

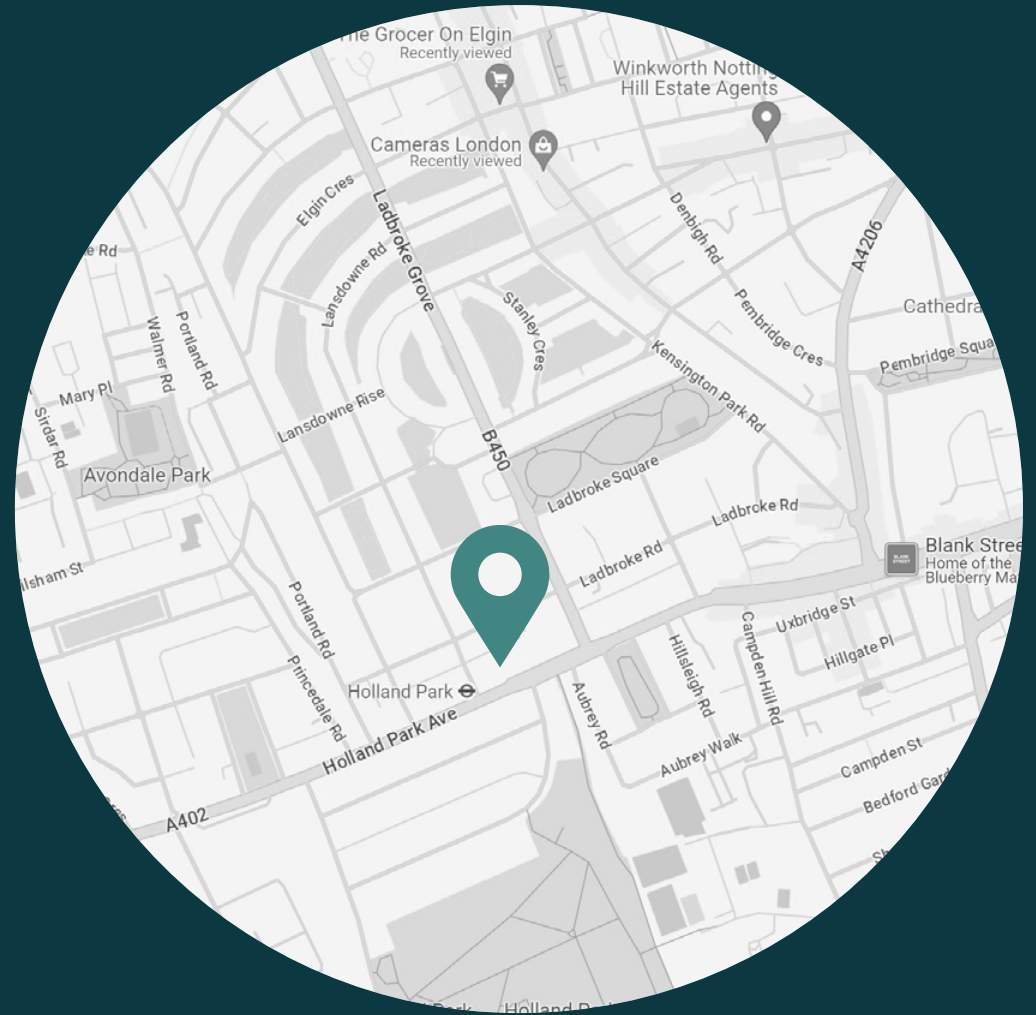
10  
ING  
CO. LTD



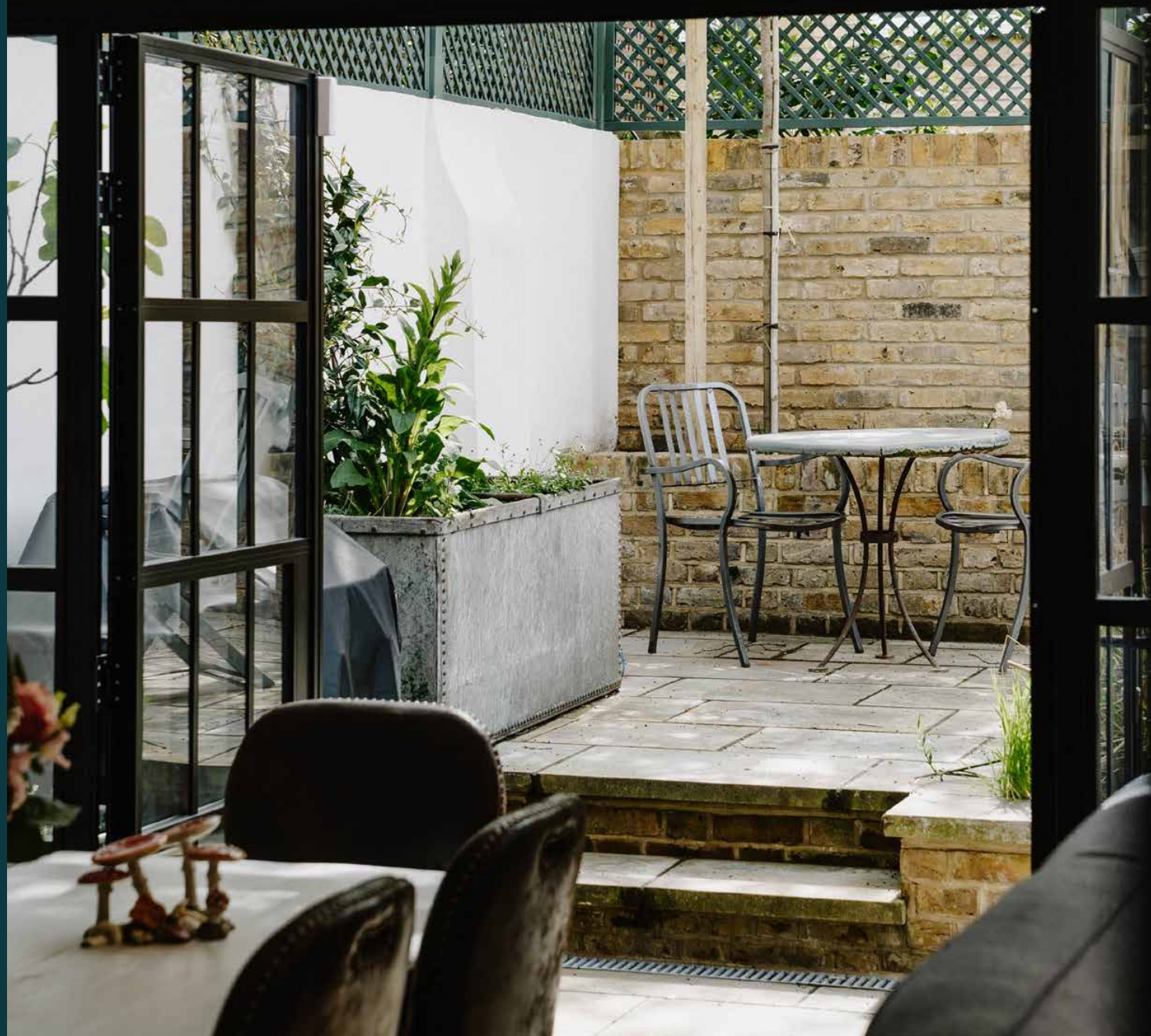
## LOCATION

Tucked away in a peaceful mews street just moments from Holland Park Avenue, Boyne Terrace Mews is the perfect springboard to this sophisticated West London neighbourhood.

Source organic groceries from Supermarket of Dreams and C Lidgate, while sweet treats are best at Buns from Home and Melt Chocolates. The eponymous Holland Park is a tranquil spot for long strolls around the Dutch and Kyoto Gardens, followed by an exhibition at The Design Museum. For world-class shopping, there's The Village at Westfield Shopping Centre, or Portobello Road's numerous vintage boutiques. Special occasions call Six Portland Road, Casa Cruz or Julie's for nights of fine dining.







#### PROPERTY HIGHLIGHTS

- Open-plan kitchen, dining and living room
- Formal reception room
- Principal bedroom
- Twin bedroom
- Study / additional bedroom
- Two bathrooms
- Private garden
- Royal Borough of Kensington & Chelsea



# domus stay.

Please don't hesitate to get in touch if you have any questions or require any further information.

[hello@domusstay.com](mailto:hello@domusstay.com)

+44 (0)20 8168 8880

Domus Stay provides the perfect combination of property, place and personal service for the world's most remarkable people. If you have any questions, or if we can help in any way, please contact us on the above number. Be it about a property you have, a property you want, dates to check or any special requirements you may need, we'd love a chat.

