

domus  
stay.

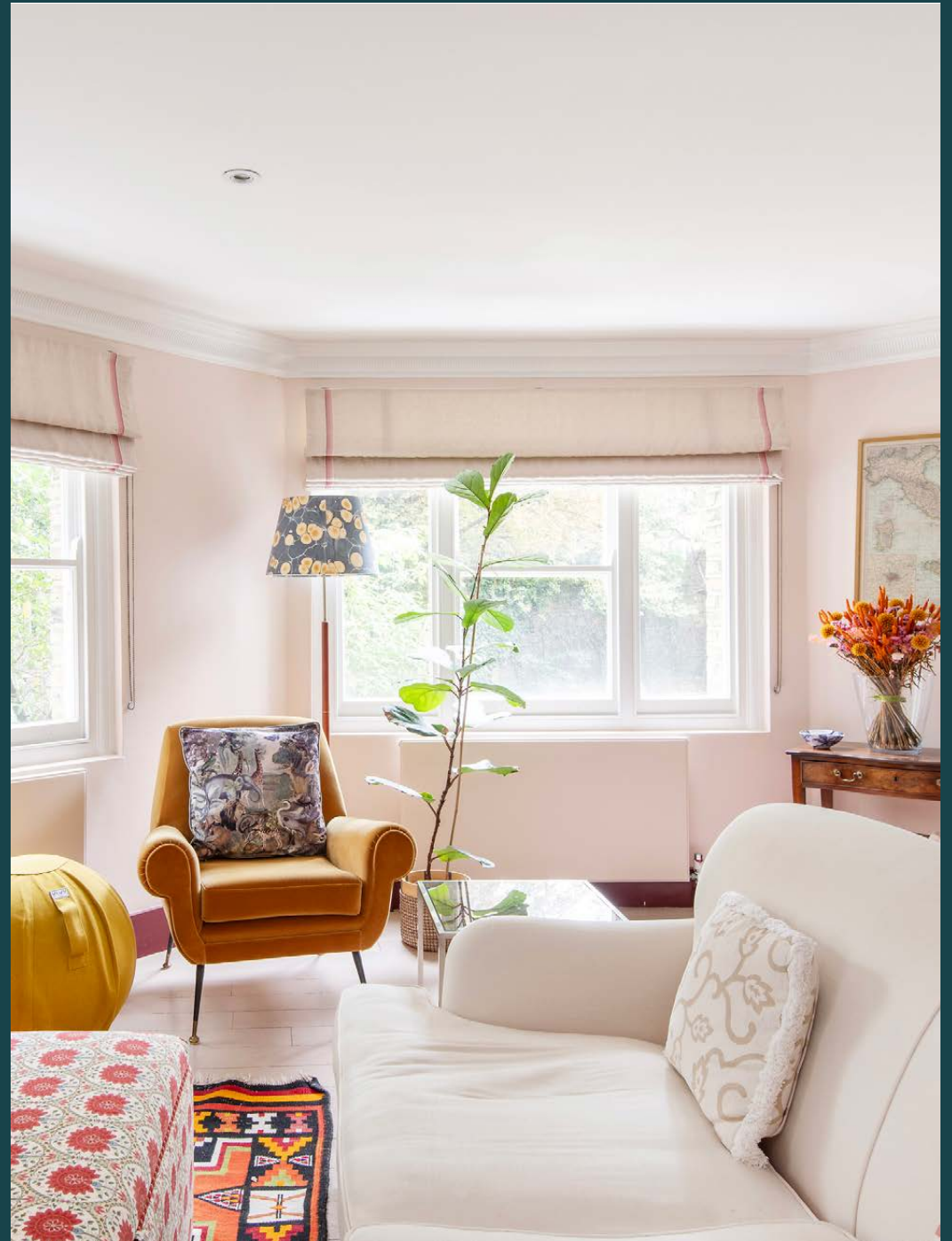
---

# Elgin Avenue

Maida Hill W9

3 Bedrooms, 2 Bathrooms  
For 5 guests

---





## Soothing tones and Italian style envelop this three-bedroom duplex apartment in Maida Vale.

Nestled in the heart of Maida Vale – a Mediterranean-inspired sanctuary. Beyond its regal brick and stucco exterior, masterfully curated styling by Leonora Hamill brings a touch of Italian design to Elgin Avenue.

Designed with an effortless flow, steps lead down to an open-plan reception and dining room. An uplifting ambiance immediately captivates – reams of natural light flooding through two expansive windows. Whitewashed wooden floors and a pared-back palette lend attention to an array of vibrant tones – introduced through custom furnishings and ceramics sourced from cities across Europe. The pièce de résistance, a Vittorio Dassi dining table comprised of glass and green marble, establishes an elegant setting for gatherings. Post dinner, mid-century style Gigi Radice armchairs create stylish spots to lounge. For a breath of fresh air or an alfresco drink, the balcony beckons.

Imbued with a bright contemporary feel, the kitchen comes fitted with soft grey shaker cabinetry and contrasting wooden worktops. Integrated Miele appliances lend a sleek feel to the space, while a calming ambiance is enhanced with spotlights. Relaxed dining and leisurely breakfasts take place at the generous breakfast bar.



Carefully curated styling by Leonora Hamill brings a touch of Italian design to the interiors.

“

Imbued with a bright contemporary feel, the kitchen comes fitted with soft grey shaker cabinetry and contrasting wooden worktops.





Ascending to the second floor, a neutral canvas is brought to life with vibrant coral accents in the principal bedroom suite. Sink into an expansive bed, with custom headboard by Leonora Hamill, bathed in natural light. Venture out to the balcony for late night drinks. Pale blue and cream mosaic tiles wrap around the en suite bathroom, fitted with a rainfall shower and refined stone vanity. Soothing hues flow through two further bedrooms, one of which has access to the second floor balcony. A generous family bathroom serves these bedrooms, featuring a large bathtub and burnt orange dual vanity.









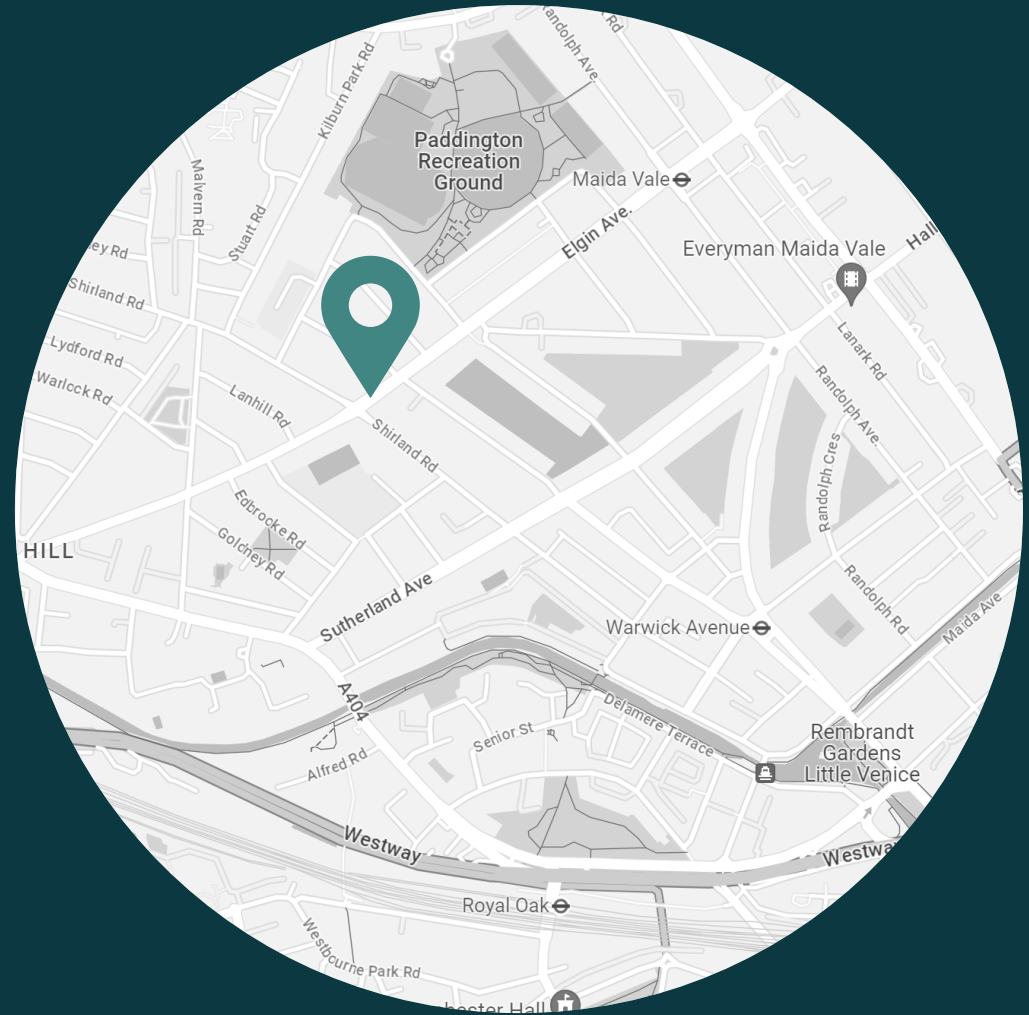




## LOCATION

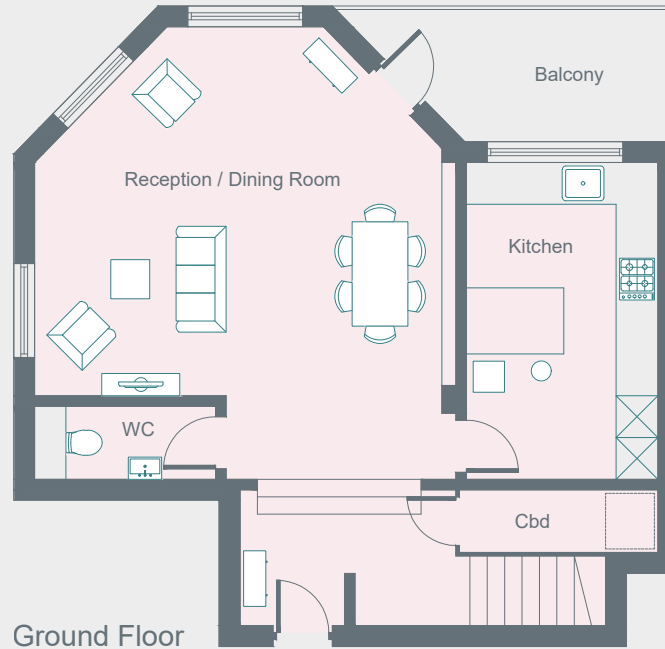
Bordered by North Kensington, Queen's Park and Notting Hill, Maida Vale is an elegant residential enclave with an enticing array of eateries and activities close by.

Walk along to Clifton Nurseries for brunch, then wander past the vibrant barges of Little Venice. Catch live theatre at Canal Café Theatre or the Puppet Theatre Barge. Venture southwards to Golborne Road, lined with independent eateries and antique stalls that feed into Notting Hill. For fine dining, stop by Sushi Murasaki, featuring an eccentric live sushi-making counter. Be home in 5.



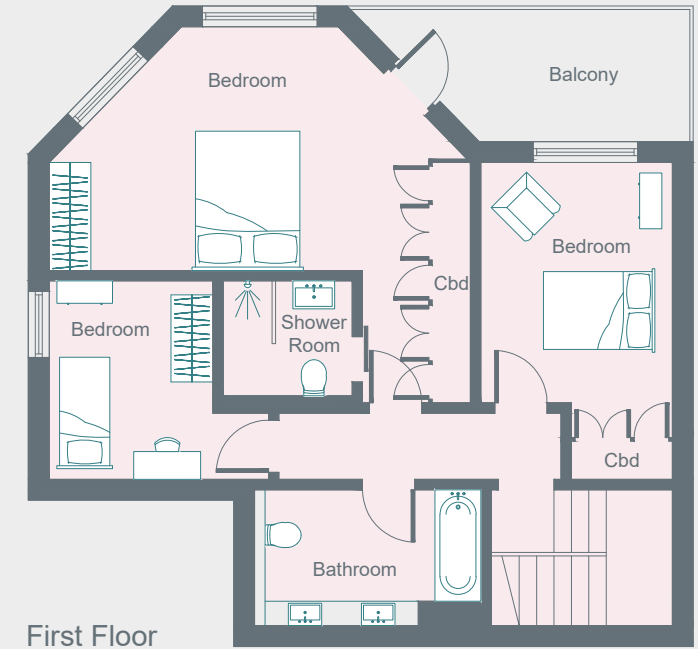
### PROPERTY HIGHLIGHTS

- Open-plan reception and dining room
- Contemporary kitchen
- Principal bedroom suite
- Two guest bedrooms
- Family bathroom
- Cloakroom
- Two balconies



Ground Floor

CH - 2.4



First Floor

CH - 2.2

# domus stay.

Please don't hesitate to get in touch if you have any questions or require any further information.

[hello@domusstay.com](mailto:hello@domusstay.com)

+44 (0)20 8168 8880

Domus Stay provides the perfect combination of property, place and personal service for the world's most remarkable people. If you have any questions, or if we can help in any way, please contact us on the above number. Be it about a property you have, a property you want, dates to check or any special requirements you may need, we'd love a chat.

