

domus
stay.

Leinster Gardens

Bayswater W2

2 Bedrooms, 2 Bathrooms
For 4 guests



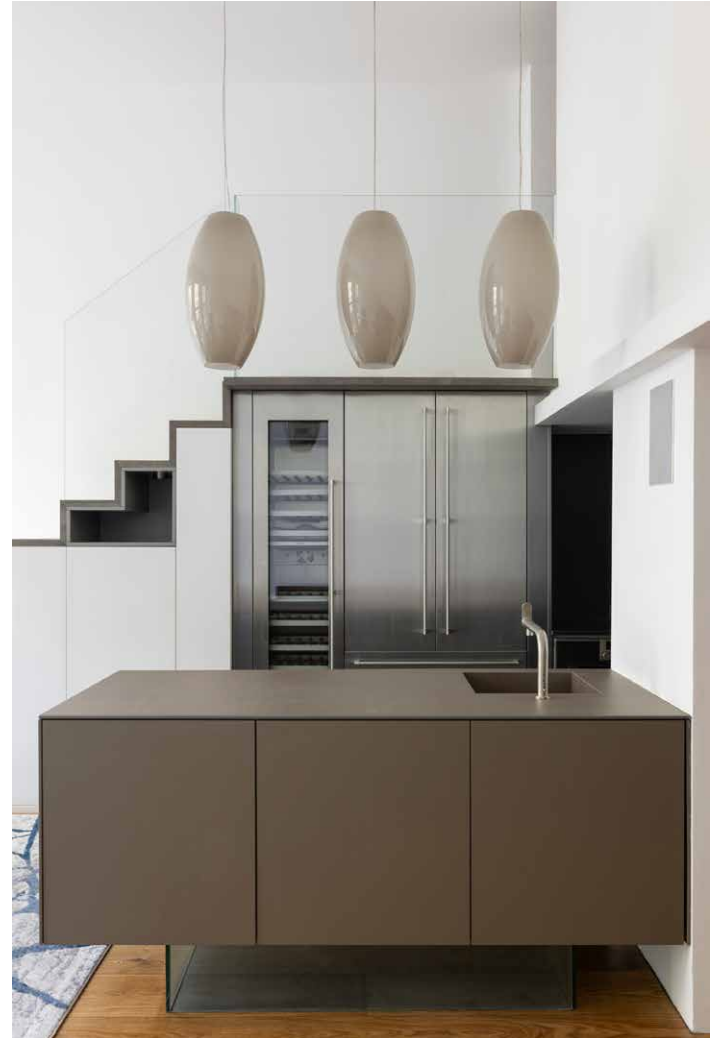


Modern design melds seamlessly with period proportions at this light-flooded two-bedroom duplex apartment in Bayswater.

Minutes from Hyde Park, this inventive home occupies a distinguished terrace. Entering on the second floor, a striking setting envisioned for entertaining unfurls. Designed with culinary aficionados in mind, a high-spec kitchen pairs clean-lined custom cabinetry with ambient architectural lighting. Cook up a meal to remember with Gaggenau appliances, then gather guests around a striking glass dining table.

A trio of west-facing French doors stretch toward the high ceiling to cast natural light into the living area — an idyllic spot to settle with a bottle from the wine cooler. When the sun shines, step out to the balcony for dinner or drinks alfresco, the leafy streetscape providing a picturesque backdrop.





“

Designed with culinary aficionados in mind, a high-spec kitchen pairs clean-lined custom cabinetry with ambient architectural lighting



Ascend an architectural staircase to the second floor, where the principal bedroom suite instills a sense of calm. Air-conditioned and calming, this space combines hardwood flooring and sculptural sconces, plus a walk-in dressing area. A dark, dramatic bathroom features oversized tiles, a Teuco bathtub to sink into, and a walk-in shower. On the first floor, there's a peaceful feel to a guest bedroom dressed in neutral tones. A sophisticated bathroom serves this room, featuring a Keuco vanity and an expansive rainfall shower.







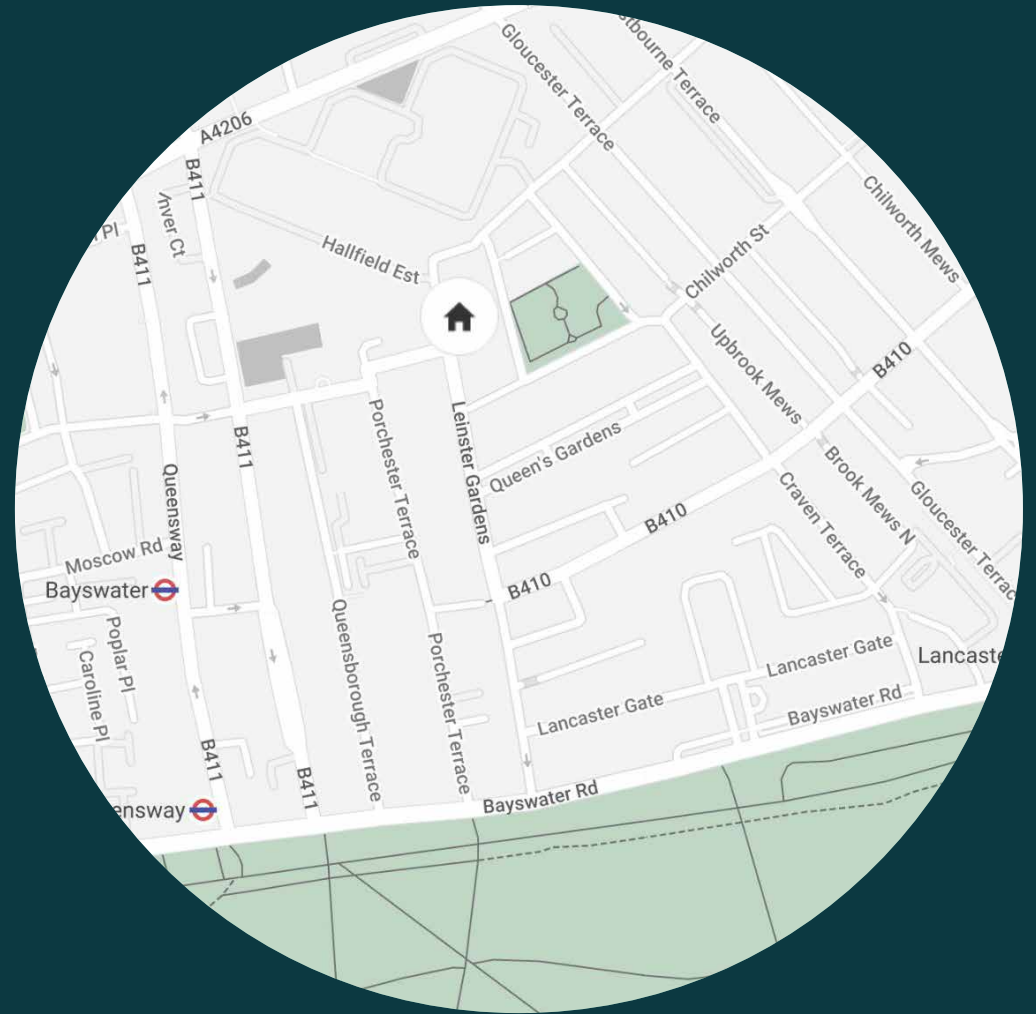




LOCATION

Moments from the peaceful corners and wide open spaces of Hyde Park, Leinster Gardens is a handsome street featuring standout period architecture.

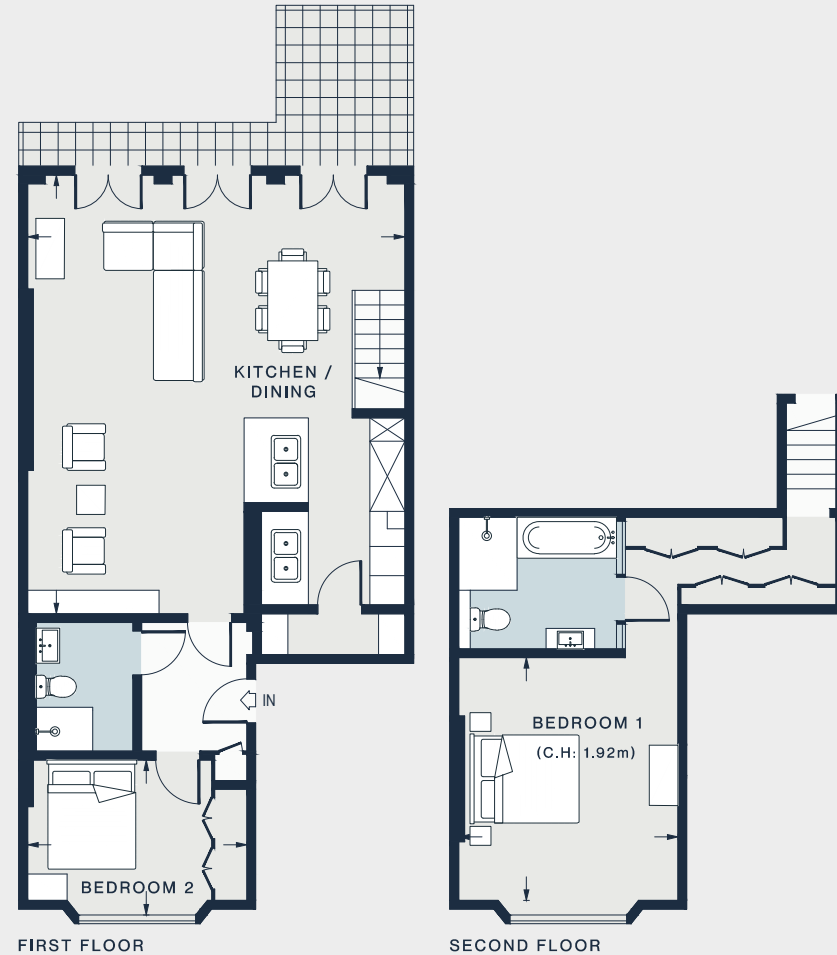
Head to nearby Westbourne Grove and start your day with a croissant from Orée, caffeinate at Beam or brunch at Sunday in Brooklyn or Granger & Co. Be sure to check out local fashion boutiques Sézane and Reformation. Further afield, the world-famous Portobello Road brings together antiques, Victorian pubs and artisanal food. Alternatively, amble north to the waterways of Little Venice and dine on Persian cuisine at Kateh. For travel around the city and beyond, Paddington Station is within a 10-minute walk.





PROPERTY HIGHLIGHTS

- Open-plan kitchen, dining and reception room
- Principal bedroom suite with walk-in dressing area
- Guest bedroom with fitted storage
- Shower room
- West-facing balcony
- Double-height living space
- Gaggenau appliances including full-sized wine fridge
- Electric towel rails and Villeroy & Boch toilets
- Lighting by Artemide, Flos and Foscarini
- Treehouse flooring with underfloor heating
- Royal Borough of Kensington & Chelsea



FIRST FLOOR

SECOND FLOOR

KITCHEN / DINING ROOM

24'7 x 21'2 (7.5m x 6.4m)

BEDROOM 1

13'7 x 12'4 (4.1m x 3.7m)

BEDROOM 2

12'4 x 8'8 (3.7m x 2.6m)

Approx. Gross Internal Area = 1,076 sq ft / 100.0 sq m

Floor plans are for illustrative purposes only and not to scale. Compliant with RICS code of measuring practice. Furniture layouts are indicative only. This property may be furnished, part-furnished or unfurnished. Please refer to your agent for details.



Please don't hesitate to get in touch if you have any questions or require any further information.

hello@domusstay.com

+44 (0)20 8168 8880

Domus Stay provides the perfect combination of property, place and personal service for the world's most remarkable people. If you have any questions, or if we can help in any way, please contact us on the above number. Be it about a property you have, a property you want, dates to check or any special requirements you may need, we'd love a chat.

