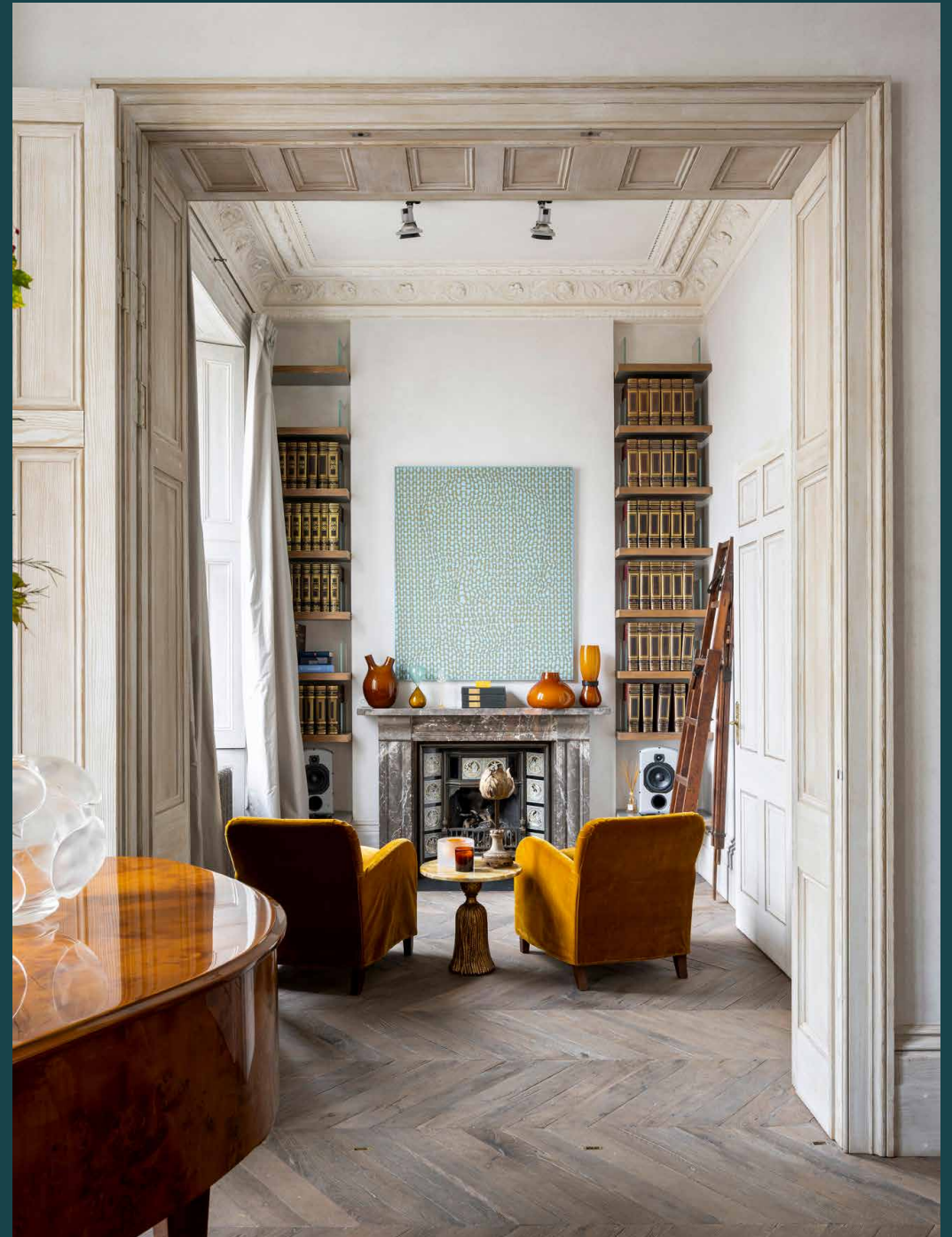


domus
stay.

Villa del Giardino

Notting Hill W11

4 Bedrooms, 3 Bathrooms
For 8 guests





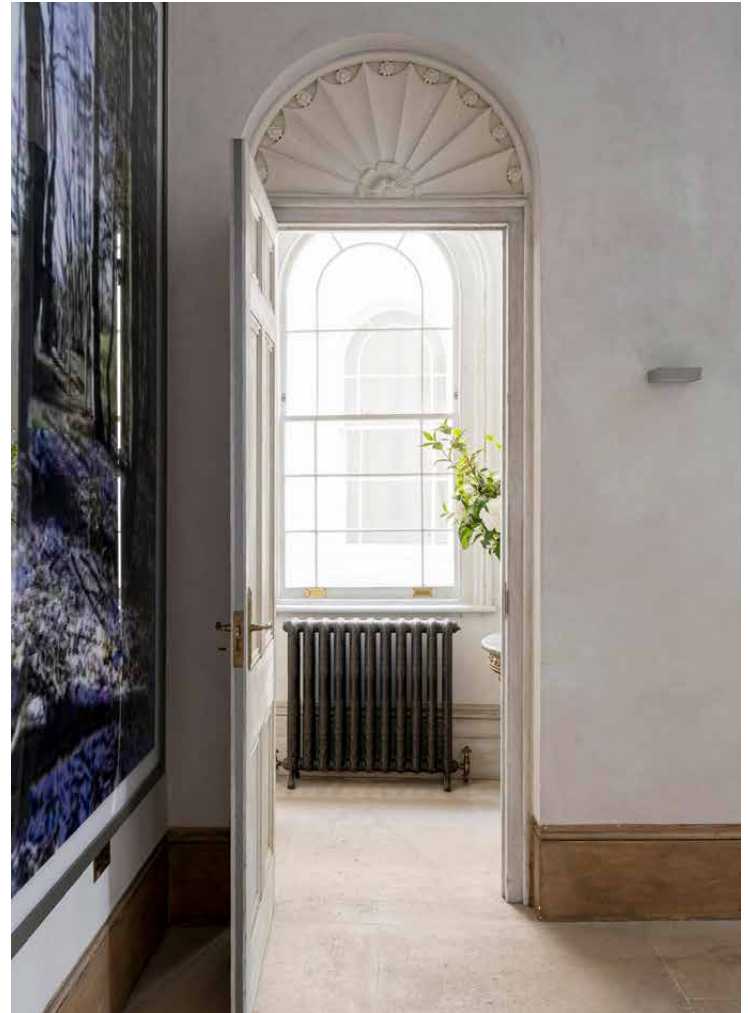
An exceptional example of Italianate architecture, this four-bedroom house stands tall at the nexus of Notting Hill's vibrant community.

Beyond the meticulous exterior of this towering terrace, palatial proportions are envisioned with a regal eye. From avant-garde artwork to an aesthetic sophistication, four carefully curated floors inspire.

A trio of interconnected rooms span the first floor, each with unique character yet cohesive flow. High ceilings and sash windows maximise light and space - a setting for families to spread out. From antique tapestries to abstract Ingo Maurer fittings, every detail here has been considered. Jewel tones punctuate the decor; rich amethyst hues soften a monochromatic palette to one side, while a vibrant palette of gold energises the other. Uplift evenings with renditions on the piano, best enjoyed from the velvet ottoman. Take late night conversation into the smaller reception room, just draw the doors and light the fire.

Venturing to the lower level, an expansive lateral space unfolds with dedicated areas to cook, dine and kick back. A striking stone fireplace anchors the lounge, where plush soft furnishings amp up an inviting feel. Stone tiles transition into the kitchen, thoughtfully designed in keeping with the home's updated decor. Think stainless steel surfaces, integrated appliances and a layout that allows for multiple cooks. Dine with an alfresco feeling in the conservatory; savour the sunshine in London's sunnier seasons, or host evening soirees with a starry backdrop. The patio beyond features a spiral staircase leading directly to the communal gardens.





High ceilings and sash windows maximise light and space - a setting for families to spread out. From antique tapestries to abstract Ingo Maurer fittings, every detail here has been considered.

“

An impressive period footprint thoughtfully updated for modern life. Expect avant-garde artwork and design that inspires.



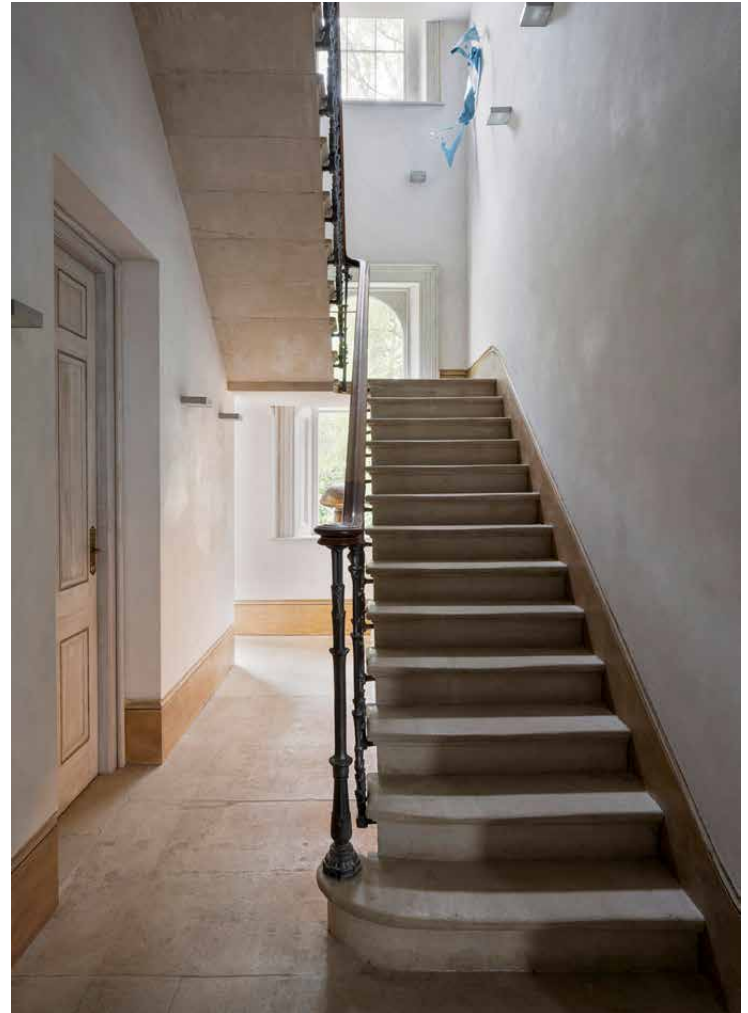












On the third floor, find a principal bedroom suite turned private sanctuary. An opulent bronze chandelier and a carved stone fireplace add warmth to the sleeping quarters, while an indulgent en suite makes waking up easy. Sink into the roll-top bathtub then get ready for the day in the dedicated dressing room. Three further bedrooms on the floor above are served by a sky-lit shower room and an elegantly appointed family bathroom. Elsewhere, three separate studies make working from home easy.



















LOCATION

There's a best-of-both-worlds feel to this section of Notting Hill. A breather from city life, but with vibrant offerings on the doorstep.

Start your morning with a walk in Holland Park or rise early to unearth Portobello Road Market's best vintage treasures – less than five minutes' walk away. Stop by Farm Girl for brunch; head to Zephyr for dinner. Three-Michelin-starred Core by Clare Smyth is perfect for special occasions, and just a minute from your door. Conclude the evening with drinks at Gold.



PROPERTY HIGHLIGHTS

- Double reception room
- Additional living room
- Open-plan kitchen, dining and reception room
- Principal bedroom suite with dressing room
- Three further bedrooms
- Family bathroom
- Shower room
- Utility room
- Two studies
- Two patios
- Communal garden access
- Royal Borough of Kensington & Chelsea



domus stay.

Please don't hesitate to get in touch if you have any questions or require any further information.

hello@domusstay.com

+44 (0)20 8168 8880

Domus Stay provides the perfect combination of property, place and personal service for the world's most remarkable people. If you have any questions, or if we can help in any way, please contact us on the above number. Be it about a property you have, a property you want, dates to check or any special requirements you may need, we'd love a chat.

