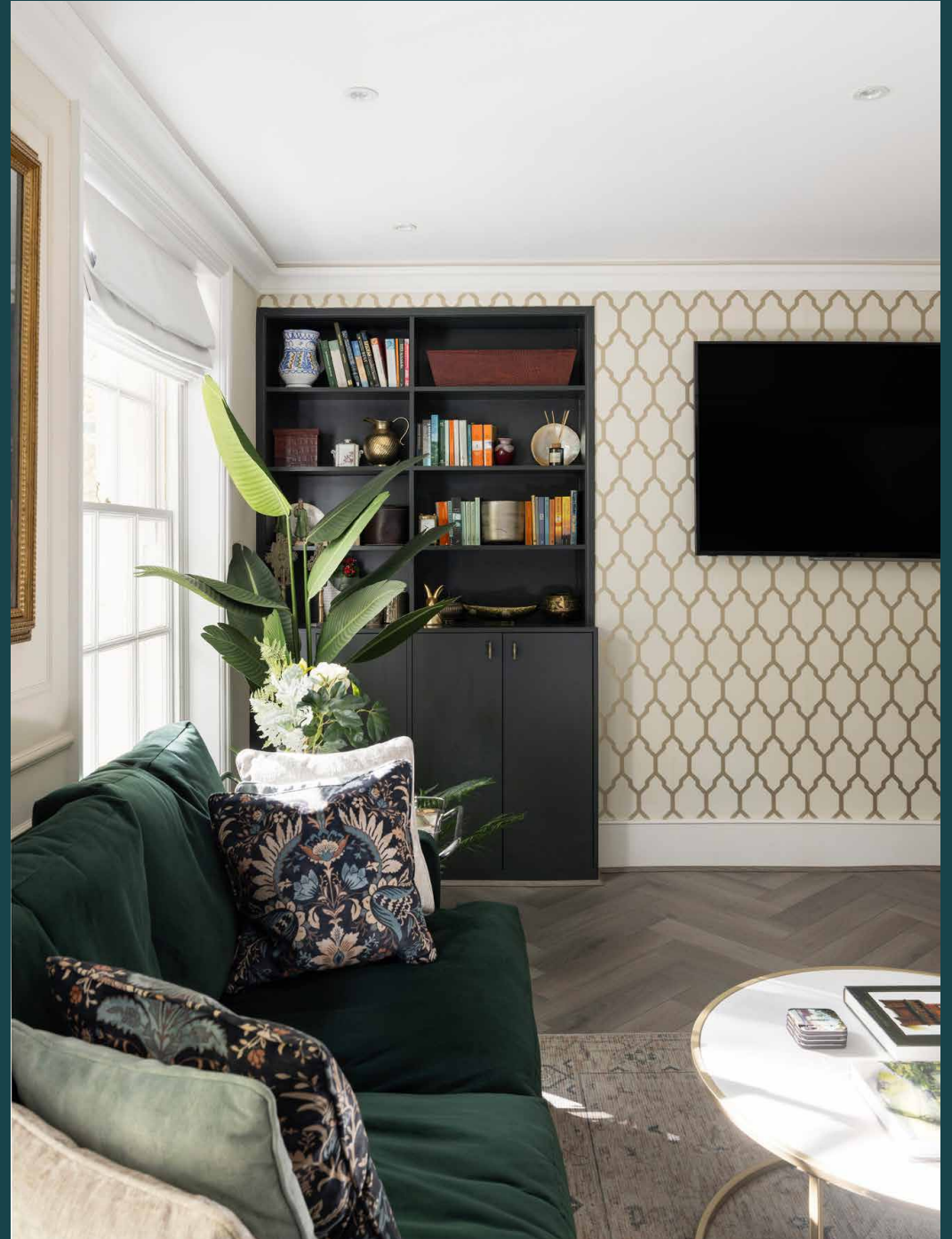


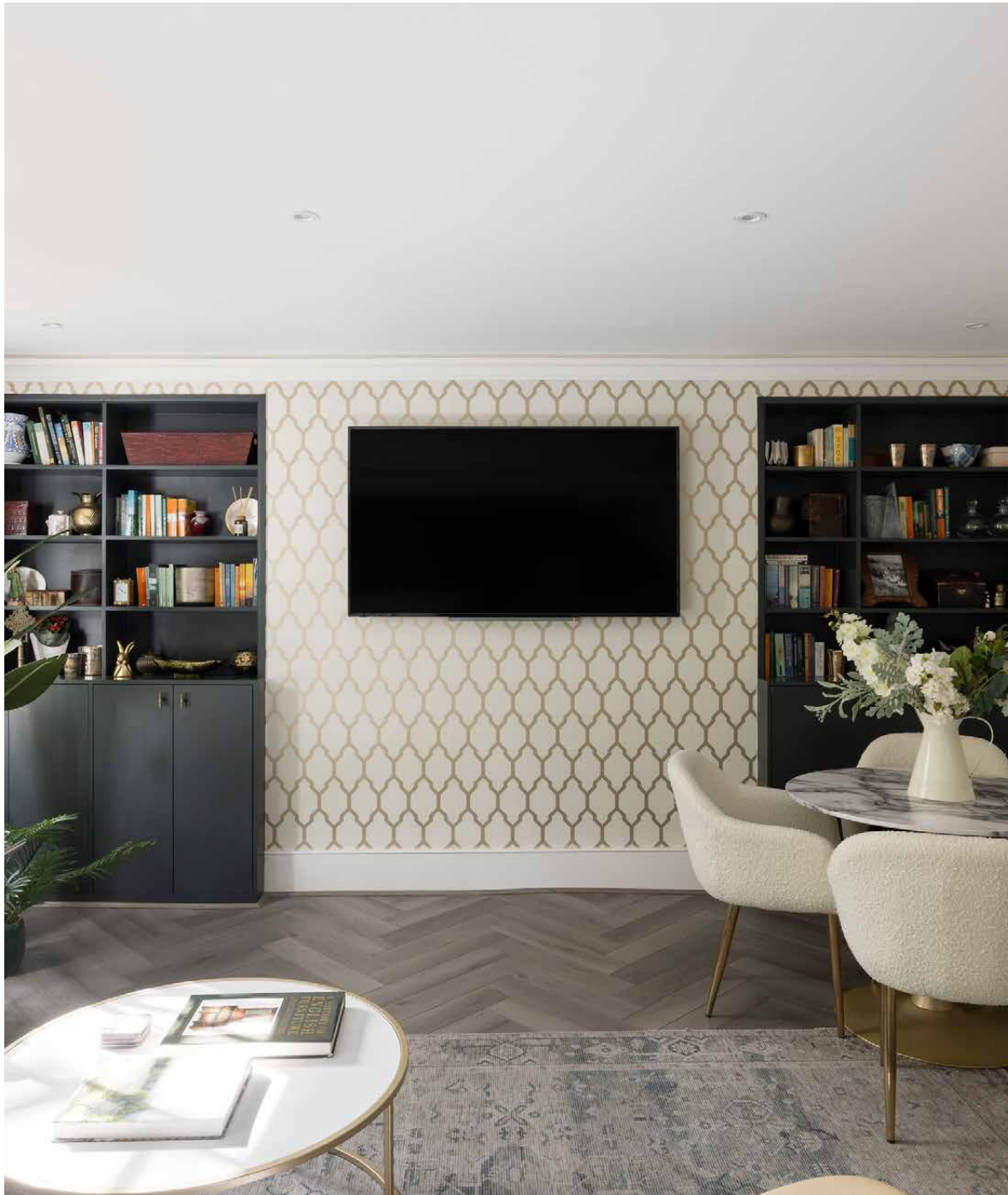
domus
stay.

Holland Park Avenue

Notting Hill W11

1 Bedroom, 1 Bathroom
For 2 guests





Minutes from leafy Holland Park and an array of neighbourhood restaurants and boutiques, this bright and considered one-bedroom apartment exudes warmth.

Among the smart, tree-lined streets of Holland Park, this classic-meets-contemporary apartment feels right at home. Large sash windows fill the space with natural light, creating an inviting atmosphere throughout.

Designed with an open-plan footprint, the generous living area is well suited to entertaining and switching off. Clean lines and uncluttered marble surfaces bring a sense of calm to the Shaker-style kitchen, which comes fully equipped with all the necessary appliances – and a four-seater dining table – to ensure your hosting needs are met.

When it comes to winding down, tune into the Bluetooth sound system, select some reading materials from the green bookcases and settle in for a night on the sofa. Parquet flooring, wall panelling and gold accents mean the home's period charm is not lost.

Gold patterned wallpaper flows through to the pared-back bedroom suite next door, bringing a sense of timelessness and cosiness to the space. Kick back on the king-sized bed; ample fitted storage keeps things streamlined and soothing, together with the neutral colour palette. Note the dressing area and desk – a versatile addition that could be useful for any home working. In contrast, the en suite bathroom is finished in striking green marble. Complete with a luxurious rainfall shower, it offers a touch of elegance.









LOCATION

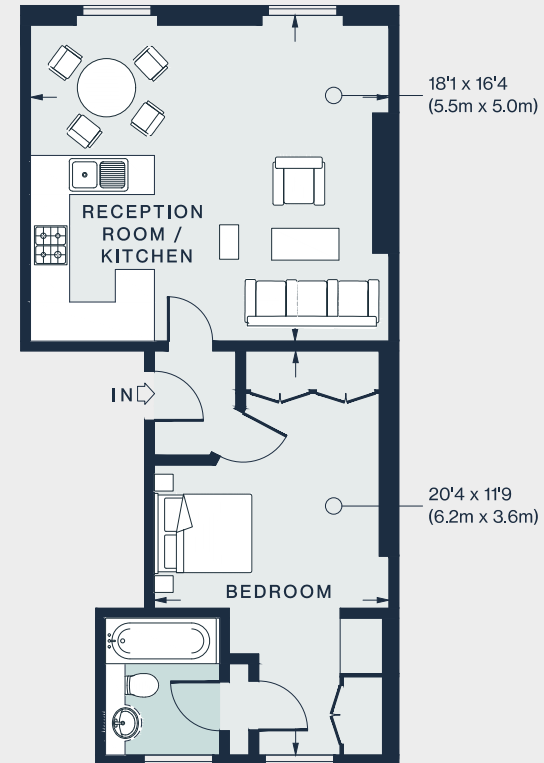
Set in one of London's most exclusive neighbourhoods, thriving local businesses and a namesake green space give Holland Park its village-like atmosphere.

A short walk away from 54-acres of parkland, stroll through the peaceful Kyoto Gardens en route to spending an afternoon absorbing the stunning interiors of Leighton House Museum. Grab a pick-me-up from Buns from Home on the way back, then peruse the local branch of Daunt Books or the boutiques in nearby Clarendon Cross. Come evening, dine at local favourites Julie's or Casa Cruz. Notting Hill's Portobello Road is also reachable on foot, as is Westfield Shepherd's Bush for designer shopping.



PROPERTY HIGHLIGHTS

- Contemporary one-bedroom apartment
- Open-plan kitchen and reception room
- Principal bedroom suite with dressing area
- Bluetooth sound system
- Envious Holland Park location
- Royal Borough of Kensington & Chelsea



SECOND FLOOR

Approx. Gross Internal Area = 558 sq ft / 51.8 sq m

Floor plans are for illustrative purposes only and not to scale. Compliant with RICS code of measuring practice.



Please don't hesitate to get in touch if you have any questions or require any further information.

hello@domusstay.com

+44 (0)20 8168 8880

Domus Stay provides the perfect combination of property, place and personal service for the world's most remarkable people. If you have any questions, or if we can help in any way, please contact us on the above number. Be it about a property you have, a property you want, dates to check or any special requirements you may need, we'd love a chat.

