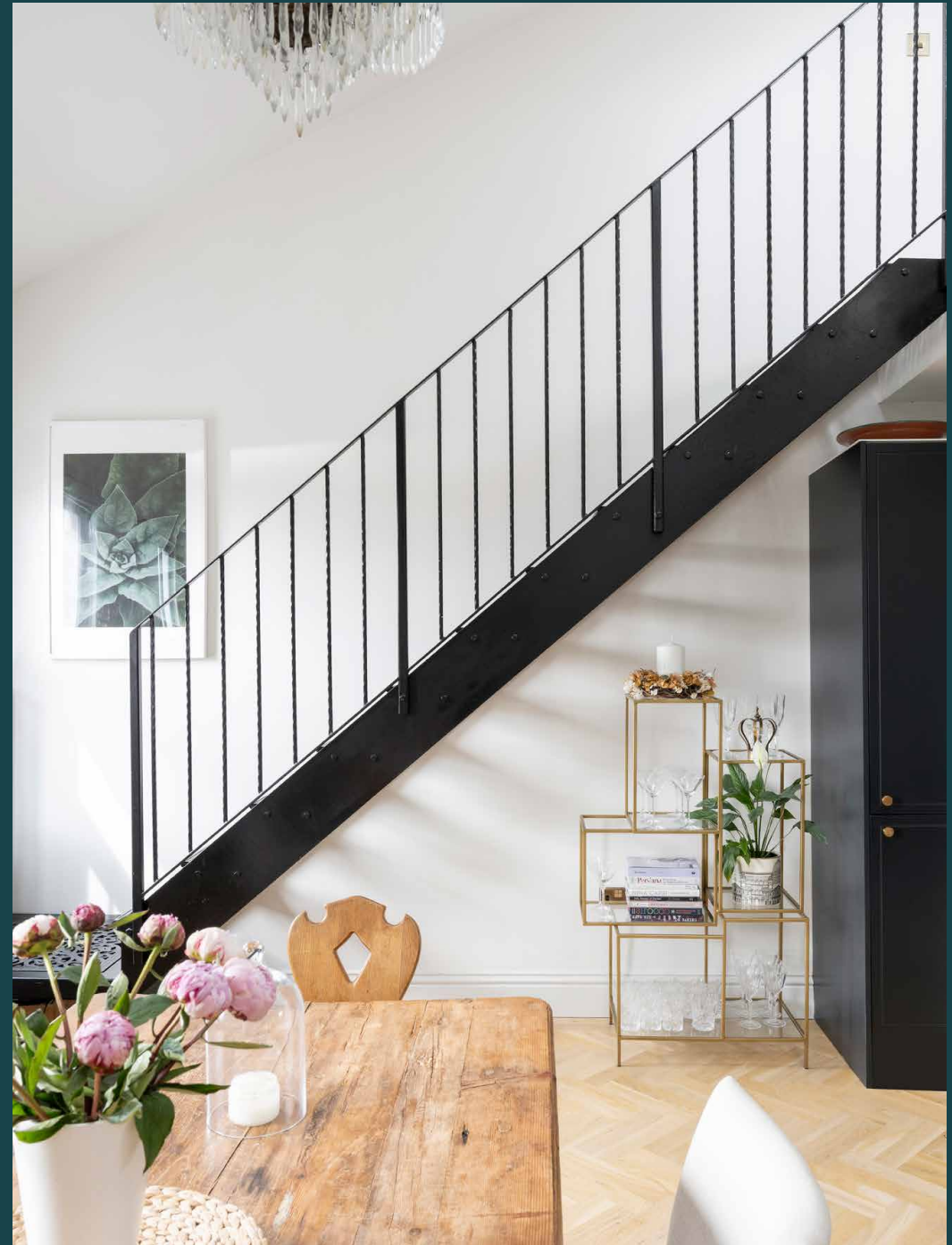


domus
stay.

MacFarlane Road

Shepherds Bush W12

3 Bedrooms, 2 Bathrooms
For 6 guests





A newly renovated three-bedroom duplex in the heart of Shepherd's Bush that marries heritage charm with contemporary design.

Bright open spaces are what this statement-making three-bedroom duplex is all about. Arranged across three floors of a classic townhouse, period features combine with clean lines and sleek finishes to create a truly elegant setting.

The open-plan kitchen and dining room sits at the heart of the apartment. Sash windows bookend the space, while a double-height ceiling and Velux windows allow plenty of natural light to stream in. Honey-hued parquet floors and an emerald-tiled fireplace highlight the apartment's period heritage, while a pine kitchen table for six brings a country-pile feel. A rangemaster-style cooker with gold finishes is a welcome addition alongside white marble countertops and a breakfast bar, ensuring all your hosting needs are met. You'll also find a guest WC finished with pale blue herringbone tiling on this floor.

In the corner of the dining area, an iron staircase winds its way up to the mezzanine living room. From here, French doors open onto a terrace, creating a streamlined flow between inside and out. Neutral tones and leafy houseplants bring a calming atmosphere.



Honey-hued parquet floors and an emerald-tiled fireplace highlight the apartment's period heritage, while a pine kitchen table for six brings a country-pile feel



“

Sash windows and a double height ceiling let natural light wash through the apartment.









Back downstairs, a guest bedroom sits behind a barn door and comes complete with an exposed brick feature wall, period cornicing and a desk – a versatile addition that could be useful for home working. These considered finishes continue into the bedroom suites below. The principal features custom-made wardrobes and a green statement fireplace that pays homage to the apartment's past. The adjoining bathroom offers a refreshing interplay between old and new with an enticing stand-alone bathtub and antique basin unit, alongside a walk-in shower. The guest suite is similarly inviting, with its striking stork wall mural and elegant en suite bathroom.

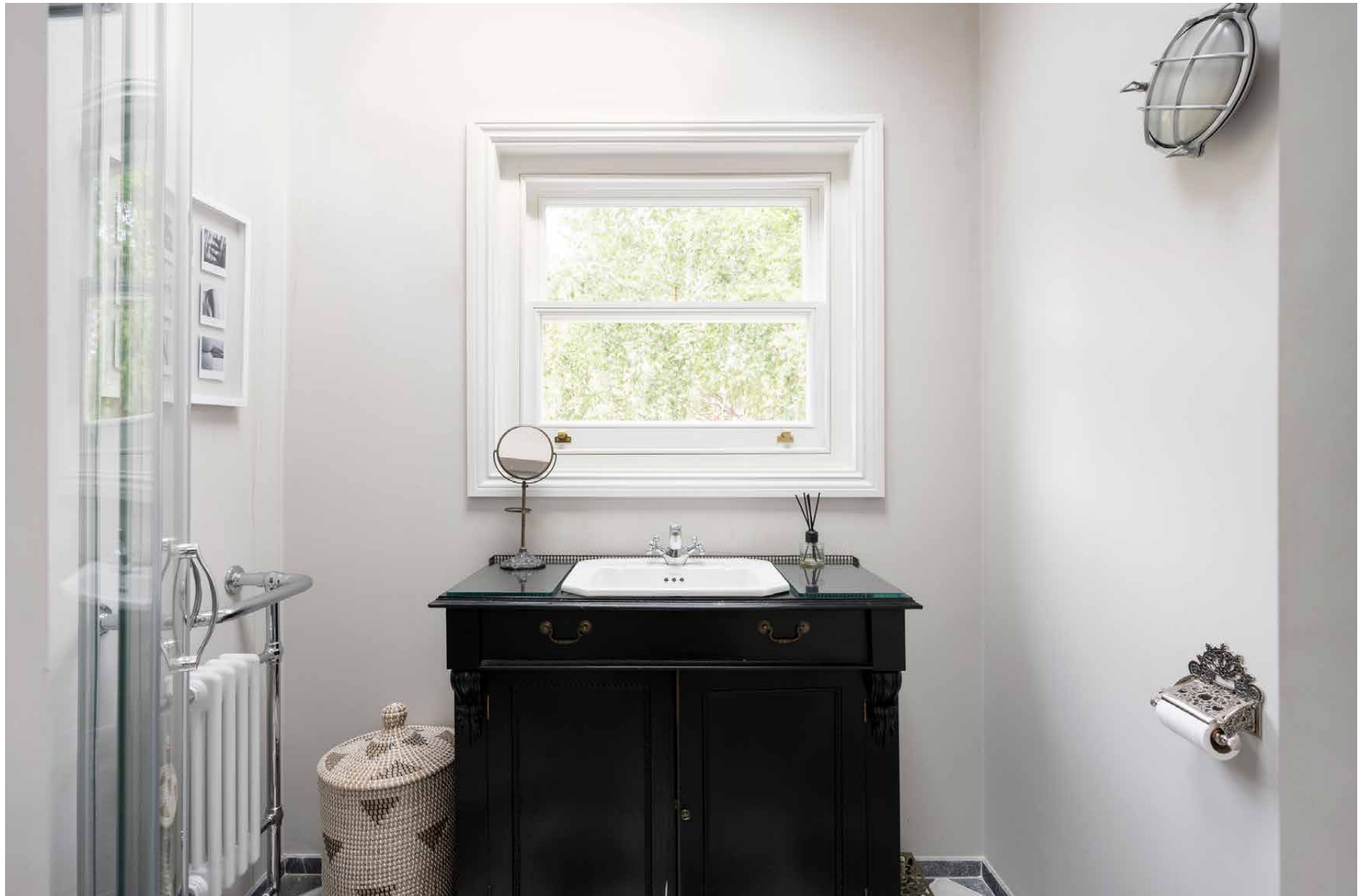












LOCATION

With Shepherd's Bush and Holland Park just a short walk away, MacFarlane Road is within easy reach of some of west London's best offerings.

Start your day with a laid-back breakfast at Proud Mary's or Wild Thyme, both just a short walk away. Then head to Westfield shopping centre to find Louis Vuitton, Prada and Mulberry at The Village. Alternatively, stroll into Hammersmith and enjoy a walk along the river, or venture north to White City House and nearby restaurants Waka, Bluebird or Michelin-starred Endo at the Rotunda. Leafy Holland Park is also just down the road, or hop on the Central Line to Notting Hill Gate to explore Portobello Road Market.



PROPERTY HIGHLIGHTS

- Open-plan kitchen and double-height dining room
- Mezzanine living room
- Principal bedroom suite
- Guest bedroom suite
- One further bedroom with desk
- Separate WC
- Private terrace



domus stay.

Please don't hesitate to get in touch if you have any questions or require any further information.

hello@domusstay.com

+44 (0)20 8168 8880

Domus Stay provides the perfect combination of property, place and personal service for the world's most remarkable people. If you have any questions, or if we can help in any way, please contact us on the above number. Be it about a property you have, a property you want, dates to check or any special requirements you may need, we'd love a chat.

