

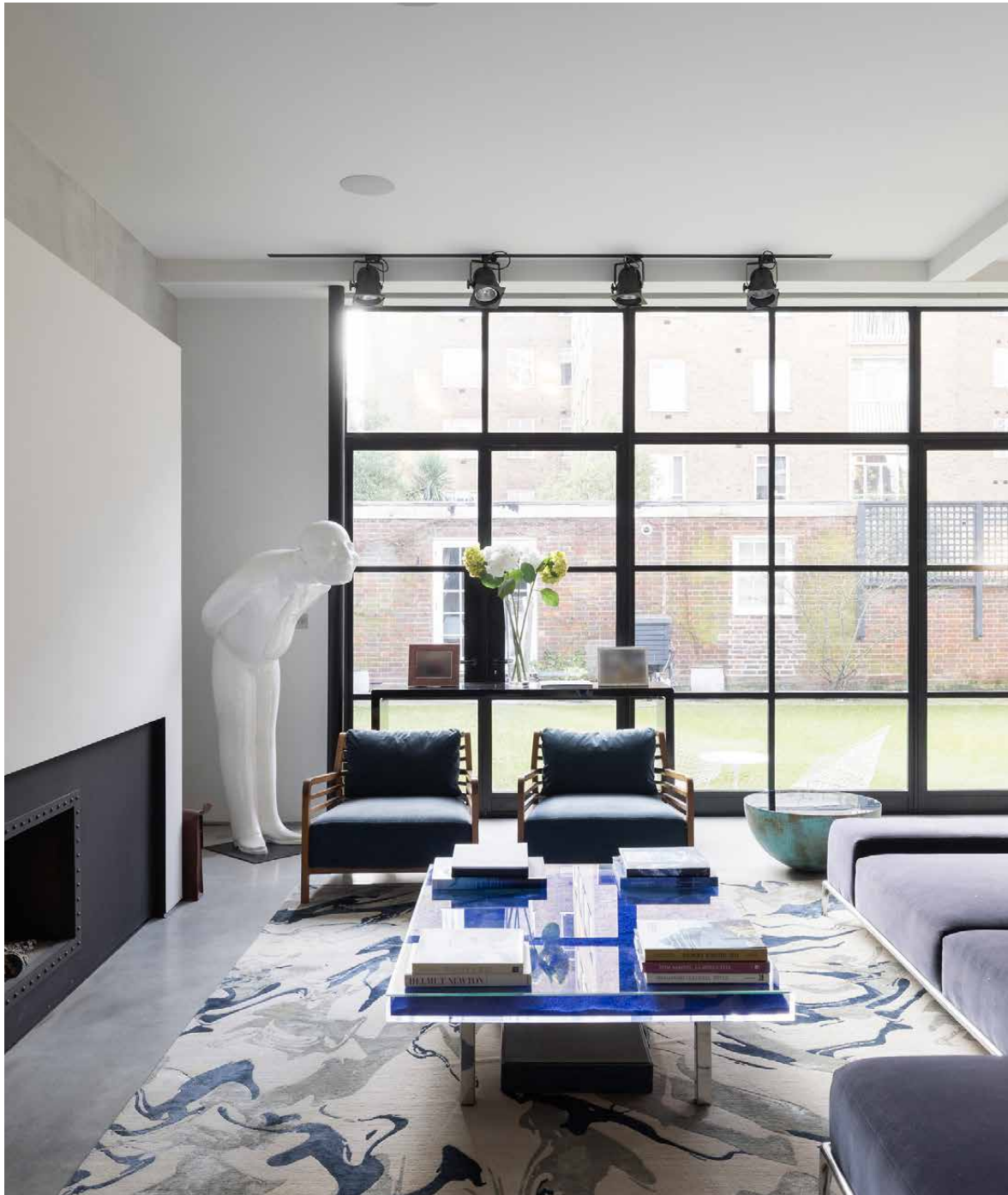
domus
stay.

Caroline Close

Bayswater W2

5 Bedrooms, 5 Bathrooms
For 10 guests





The epitome of privacy, with a live-in driver, housekeeper and chef at your disposal. Hyde Park is just across the road.

Tucked away on a private, gated close, this imposing three-storey, five-bedroom home promises the highest levels of security and seclusion. From here, you can reach the rambling green spaces of Kensington Gardens and Hyde Park in a matter of seconds, although you'll feel far removed from the action once the iron railings shut behind you. To enable you to fully switch off, staff live on site, ensuring that the everyday runs seamlessly.

A brilliant sense of light and space flows throughout, with most rooms enjoying double or triple-aspect outlooks that bring a calming, comfortable atmosphere. At the home's core, a standout kitchen, living and dining room makes a striking contemporary addition to the more classic-leaning setting. Wall-to-wall Crittall glazing opens onto the courtyard garden, brightening the voluminous space. The design is bold with an industrial edge – polished concrete floors, a minimalist fireplace and a lateral footprint create a gallery-like backdrop for art, artefacts and sculpture.

To one side of the room, a sofa and armchairs are angled towards a wide chimney breast that doubles as a projector screen for movie nights in front of the fire. Just beyond, five pendant lights cast an ambient glow over a large 10-seater dining table – a convivial setting to enjoy meals cooked by your private chef in the high-spec kitchen.

Ample worktop space, Miele appliances and a wine chiller make this a culinary space that's fit for entertaining a crowd. When the weather allows, step outside to the garden; the house wraps around it like a horseshoe, adding an extra layer of privacy. A towering plane tree provides welcome shade in the sunnier months.



Entertain in a standout kitchen and dining room that's set up for gatherings, elevated by the presence of your own on-site chef and housekeeper.



“

A brilliant sense of light and space flows throughout, with most rooms enjoying double or triple-aspect outlooks that bring a calming, comfortable atmosphere.













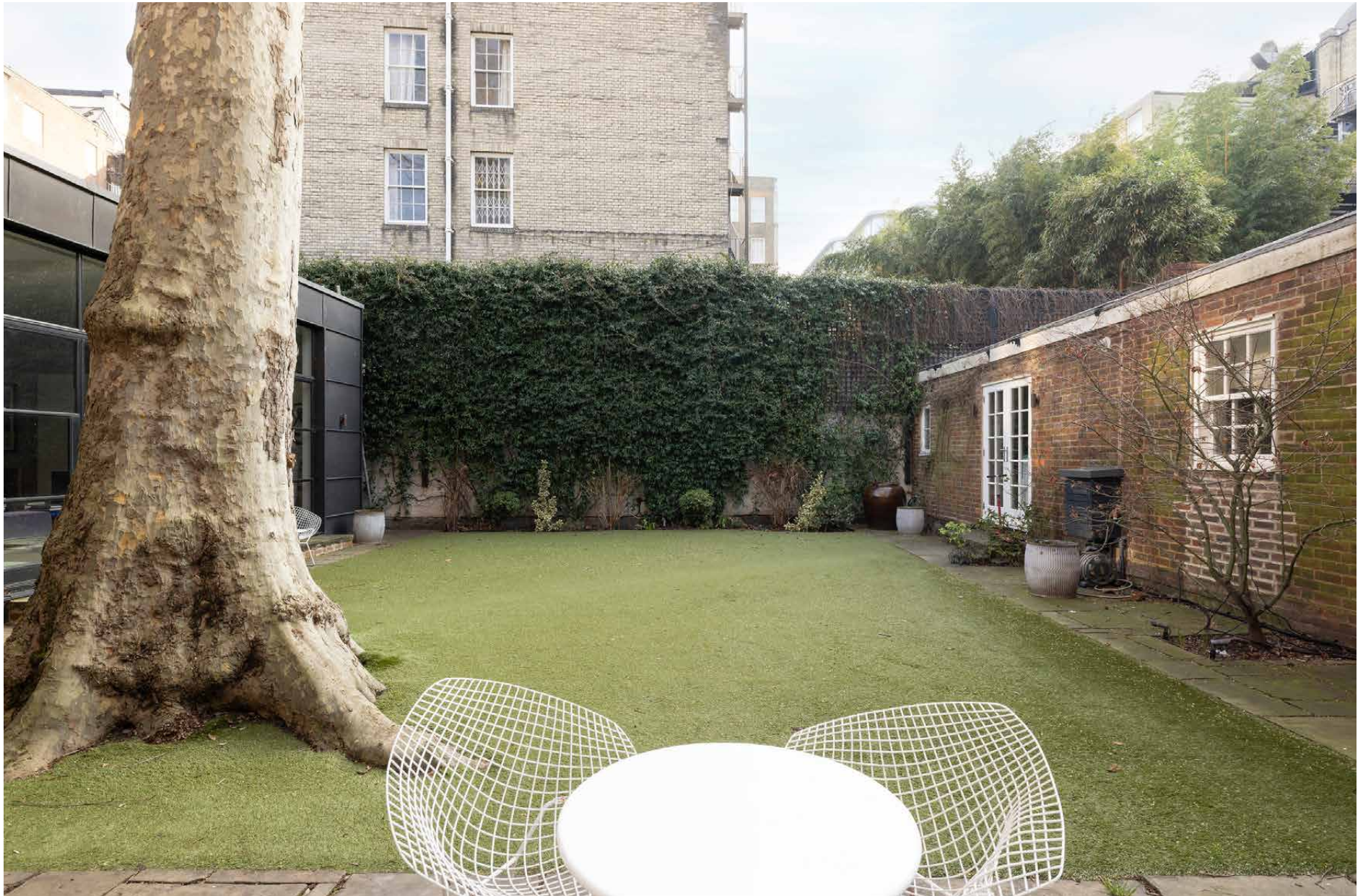




A separate triple-aspect reception room also opens onto the garden. A cosy space to retreat to in the evenings, there's a fire with a fender seat surround, and a range of deep armchairs and a sofa to kick back in. In the corner, an antique desk is ideal for working from home. Off the other side of the wide hallway, double doors open to a formal dining room-cum-library, painted in a deep blue. Integrated bookshelves, a window seat and Versailles parquet flooring bring a sense of occasion to the space.











Five bedroom suites are arranged across the home's two upper floors. The principal is calming and well-appointed. Green floral wallpaper adds a sumptuous feel, while a walk-in wardrobe sees to the practicalities. The en suite is designed for unwinding, with a large roll-top bath and double marble sinks. Four further bedrooms all come with en suite bathrooms and are set to soothe with hushed tones and soft carpets.



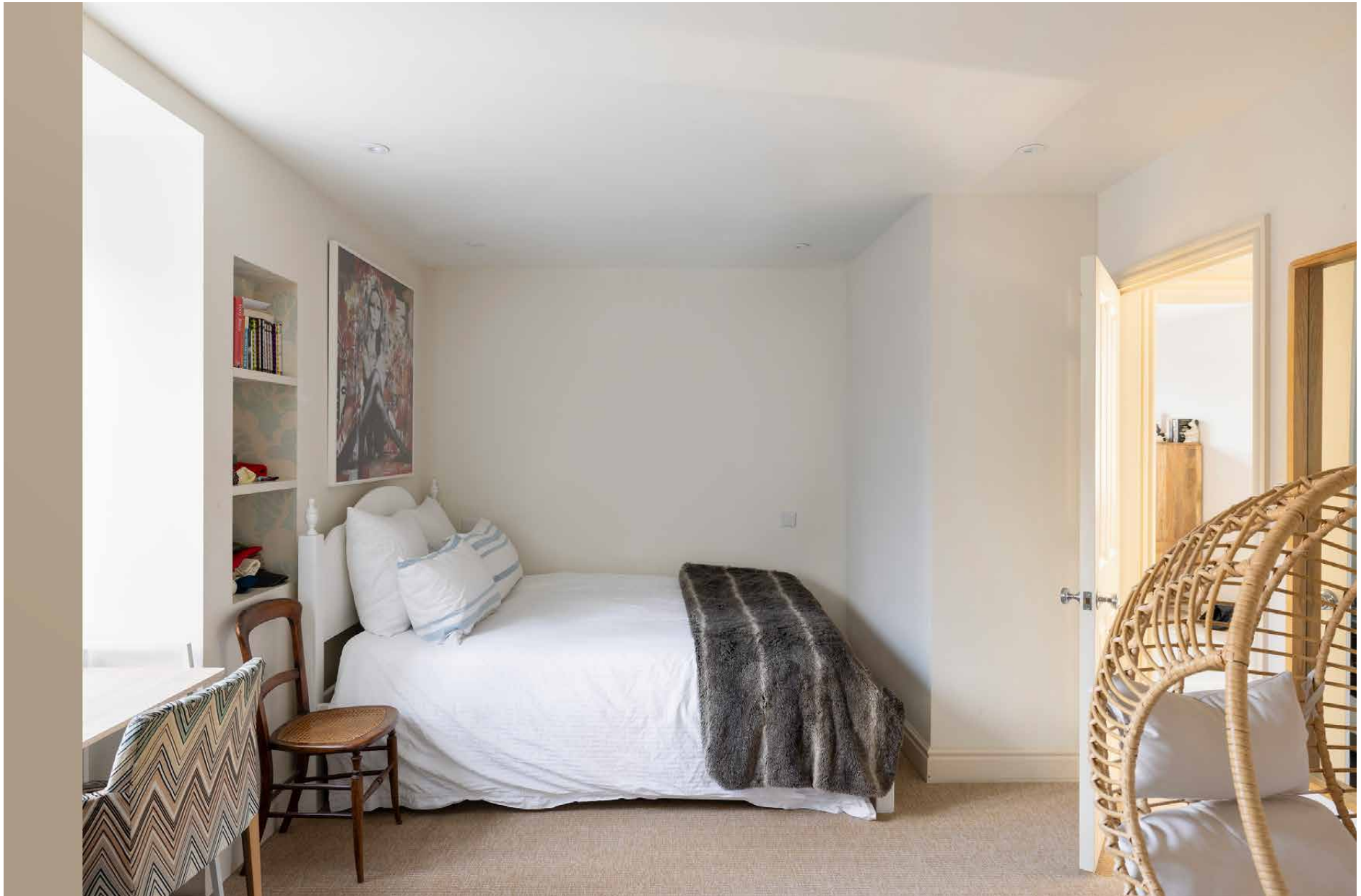












LOCATION

With so much green space on the doorstep, take a breather from the relentless pace of city life here.

Stroll towards the Albert Memorial in Kensington Gardens, wander around the lake in Hyde Park or – if you're feeling brave – dive into the Serpentine Lido. Recharged and ready to go, the best of Bayswater and Notting Hill is within walking distance. Ease into the day with a flat white at Guillam Coffee House, a workout at Heartcore, or brunch at The Park. Then continue along Portobello Road for a spot of vintage shopping. Come evening, head to Sol's – a favourite neighbourhood wine bar and deli.



PROPERTY HIGHLIGHTS

- Gated home with highest levels of security
- Driver, housekeeper and chef on site
- Walking distance from Hyde Park and Kensington Gardens
- Expansive kitchen, dining and living room
- Formal reception room
- Dining room and library
- Private courtyard garden
- Principal bedroom suite
- Four additional bedroom suites
- Driving available at an hourly cost
- Secure parking with space for one additional car





Please don't hesitate to get in touch if you have any questions or require any further information.

hello@domusstay.com

+44 (0)20 8168 8880

Domus Stay provides the perfect combination of property, place and personal service for the world's most remarkable people. If you have any questions, or if we can help in any way, please contact us on the above number. Be it about a property you have, a property you want, dates to check or any special requirements you may need, we'd love a chat.

