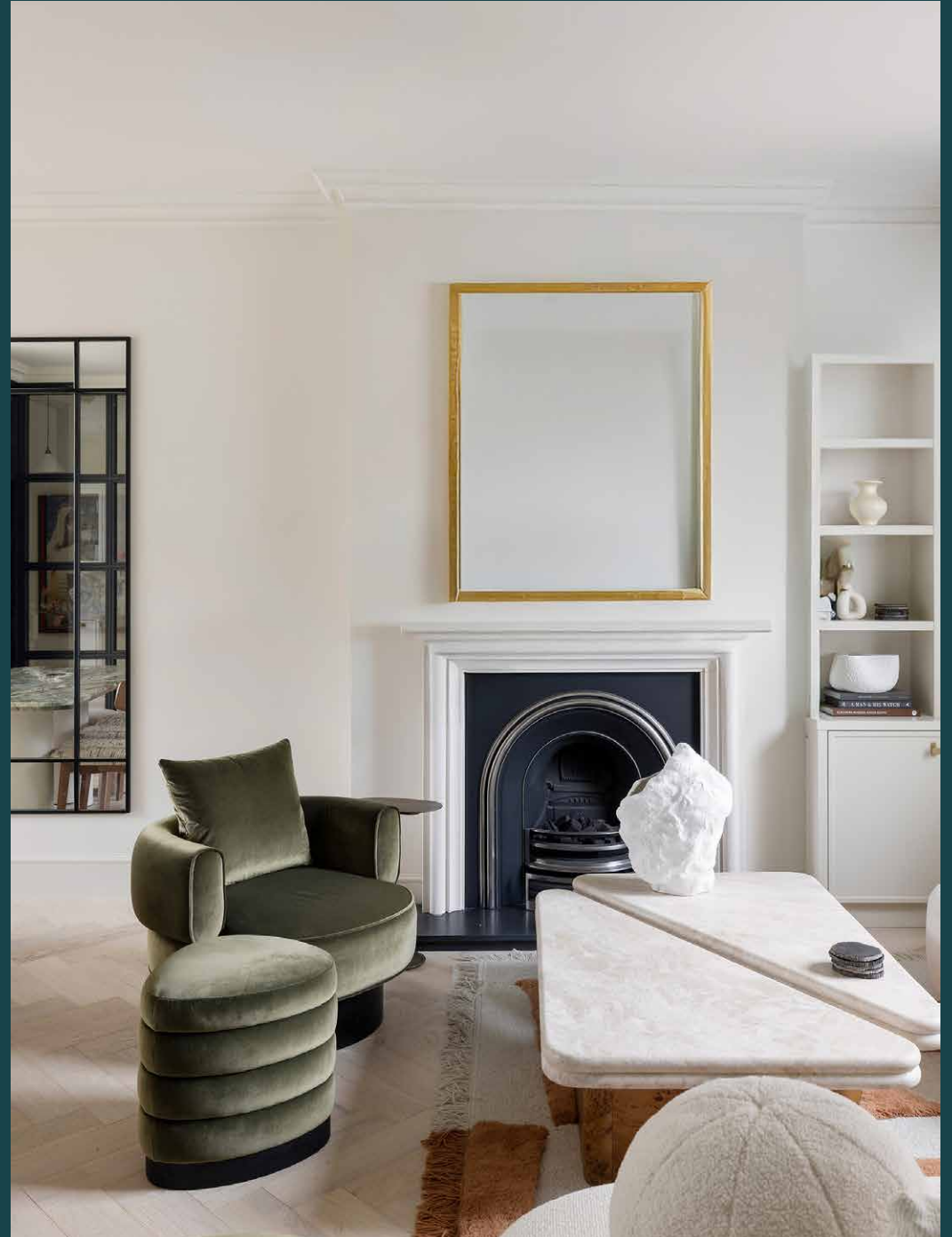


domus
stay.

Talbot Road III

Notting Hill W2

3 Bedrooms, 2 Bathrooms
For 6 guests





Modern interventions enliven the period framework of this elegant three-bedroom maisonette in Notting Hill.

Set on a handsome street just a short walk from Portobello Road, this newly refurbished maisonette can be found with in an immaculate heritage property. White masonry pops against the latte-toned exterior while a raised ground-floor entrance leads into the building through a striking portico porch.

Inside, industrial Crittall-style doors grant access to the open-plan kitchen, dining and reception room. Light is channelled through an expansive sash window, playing off the neutral walls and lofty ceilings. A period fireplace and mantle are a convivial focal point in the living area, providing a comfortable and cosy space to kick back. Underfloor-heated parquet flooring sweeps underfoot into the kitchen and dining area, where a wall of steel-framed glazing invites an abundance of light and illuminates the elegant Italian marble worktops. Integrated Miele appliances ensure hosting is easy, helped further by access from the kitchen down to a quiet terrace, perfect for al fresco dining. Tucked off the living area, a rear facing office provides an undisturbed space for work and relaxation.



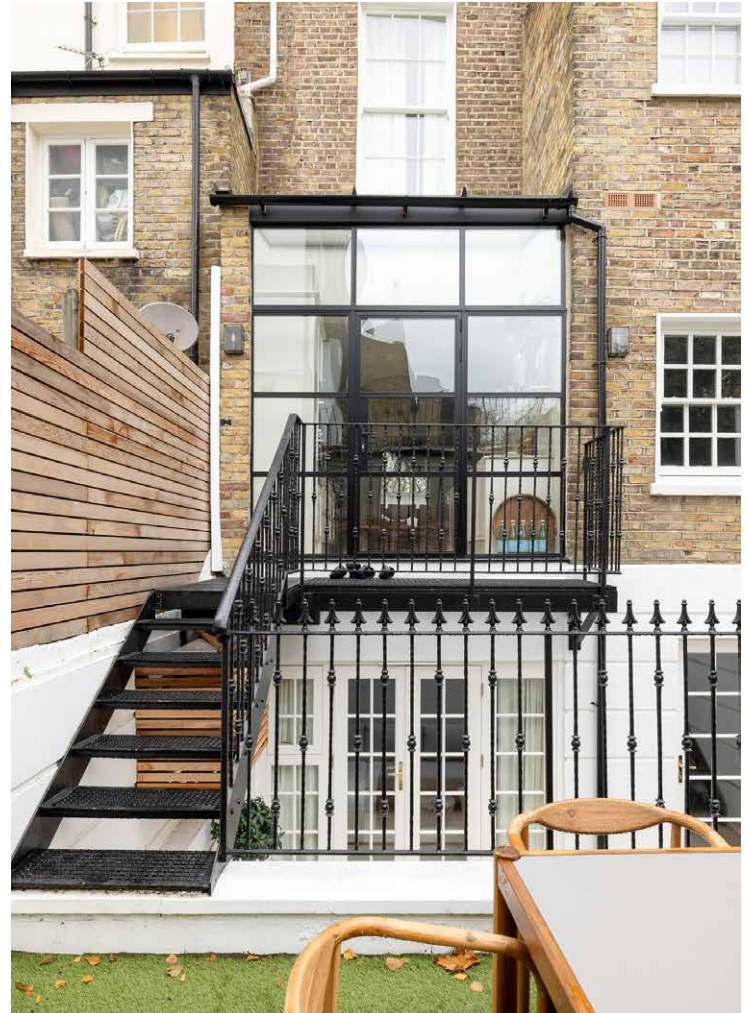
A period fireplace and mantle are a convivial focal point in the living area, providing a comfortable and cosy space to kick back.

“

An unrivalled setting in West London, there's easy access to the best that Notting Hill has to offer.







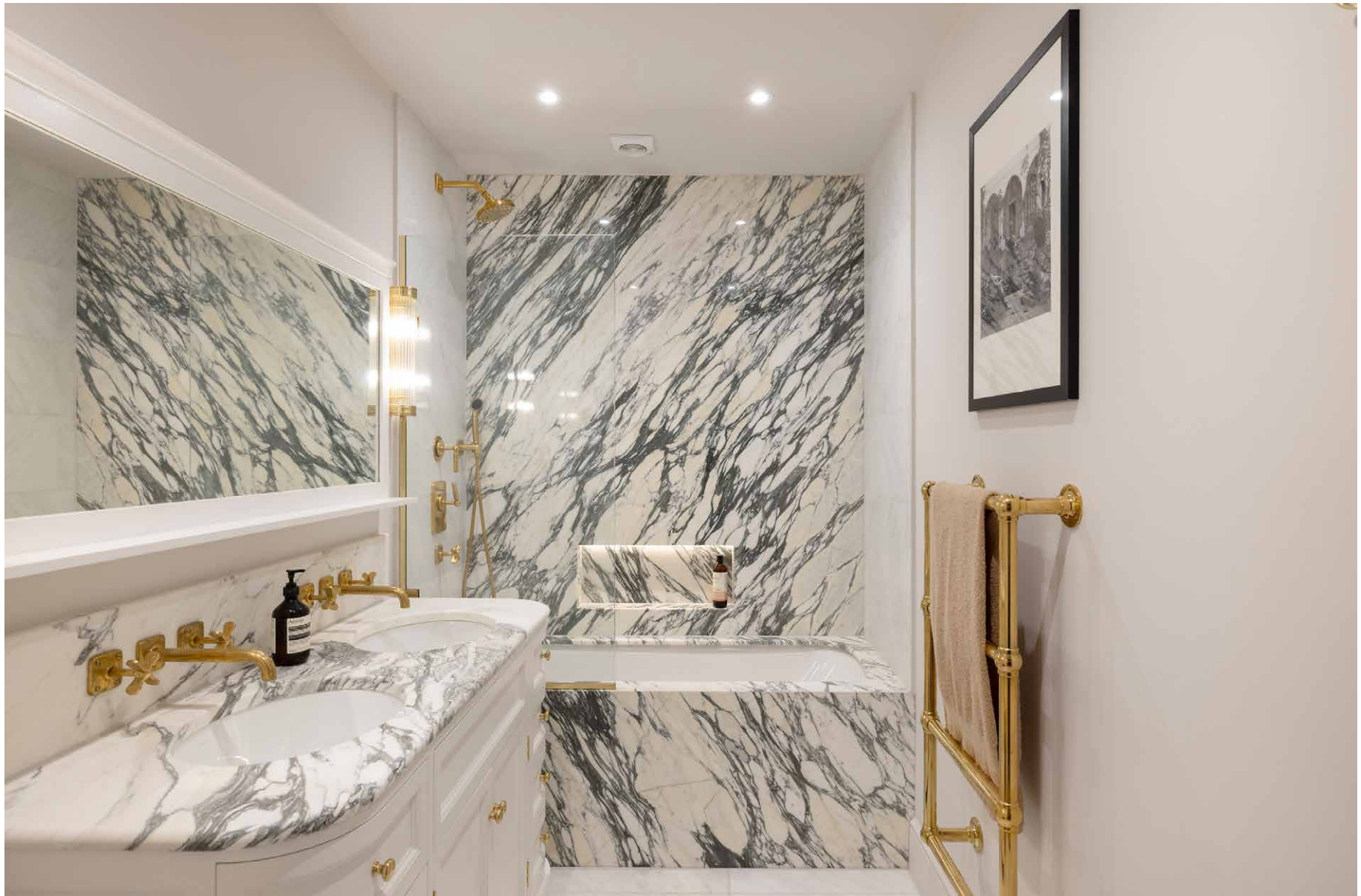


The bedrooms are arranged across the lower level where a sense of seclusion has been created within the principal bedroom suite. A refined palette grounds the space while elegant cornicing nods to the history of the home. South-facing French doors invite natural light in and open onto a private patio. A wall of bespoke joinery conceals the entrance to the room's en suite bathroom, where a dual vanity and striking marble bathtub set an inviting scene.

Pristine finishes continue into the guest bedrooms with neutral tones and natural light, creating tranquil sleeping spaces. Both are served by a bathroom with a generous walk-in shower.





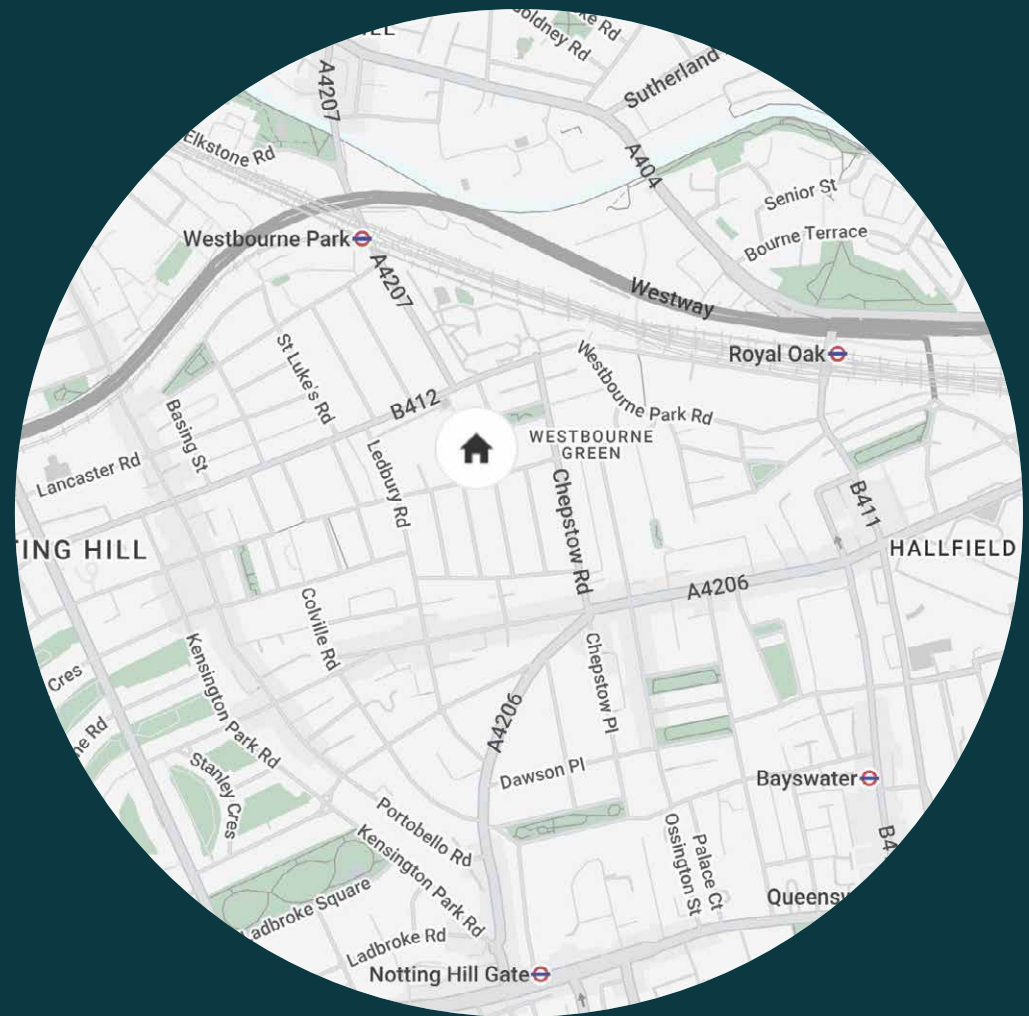




LOCATION

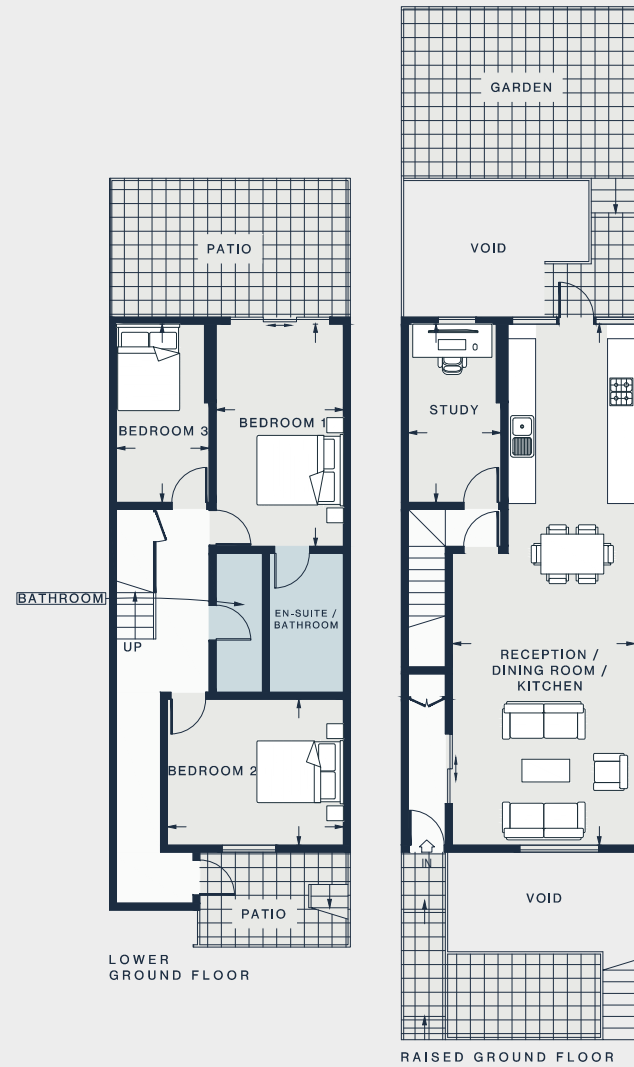
Immersed in a residential atmosphere. Minutes from Notting Hill's upmarket boutiques and restaurants.

Reach the neighbourhood's most iconic addresses in minutes. Within five, you can be browsing Portobello Road or Westbourne Grove. Sip on a coffee at Beam or get your heart racing at Bodyism. Grab something biodynamic at Daylesford Organic and head in the direction of Hyde Park for an al fresco lunch. Spend evenings at buzzy local bistro Dorian or savour the fine dining on offer at The Ledbury.



PROPERTY HIGHLIGHTS

- Open-plan kitchen, dining and reception room
- Principal bedroom suite with dressing room
- Garden and two patios
- Two further double bedrooms
- One further bathroom
- Office space
- Recently elegantly renovated
- Royal Borough of Kensington & Chelsea





Please don't hesitate to get in touch if you have any questions or require any further information.

hello@domusstay.com

+44 (0)20 8168 8880

Domus Stay provides the perfect combination of property, place and personal service for the world's most remarkable people. If you have any questions, or if we can help in any way, please contact us on the above number. Be it about a property you have, a property you want, dates to check or any special requirements you may need, we'd love a chat.

