

domus
stay.

Sydney Place

Chelsea SW7

3 Bedrooms, 2 Bathrooms
For 5 guests





Impressive proportions instil a sense of calm at this light-filled three-bedroom apartment in South Kensington

In walking distance to South Kensington's museum heartland, an apartment with an artistic persuasion. Found on the ground floor of a stucco-fronted townhouse, classic architecture has been given a contemporary refresh. Gravitate towards the dual aspect reception room, where lofty three-metre-high ceilings and intricate cornicing nod to the home's heritage past and floor-to-ceiling French doors bookend the space – facing east and west to catch the sun throughout the day. At the front of the home, a Juliet balcony brings the outside in with soothing leafy views. Settle in for the evening on one of the striped armchairs with a book from the well-stocked bookshelves.

Terracotta tiles add a Mediterranean feeling to the dining room. A glass table for six takes centre stage, while a set of duck egg blue French doors open onto the private garden. Plenty of greenery ensures privacy, while outdoor furniture provides the ultimate spot for al fresco dining.

Back inside, a well-appointed galley kitchen sits off the dining room, with the same terracotta-tiled floor. Light floods in through a large sash window, illuminating the integrated appliances and Shaker-style cabinetry.





Understated walls provide a blank canvas to showcase artwork and furniture with a playful palette.



“

Floor-to-ceiling windows in the double reception room lets natural light wash over the interiors.













The other half of the home is occupied by comfortable sleeping quarters. The principal bedroom is a space to unwind in, infused with natural light from a set of French doors. A thoroughly relaxing affair, it features a 60's-style woven wicker bed and a series of integrated wardrobes. Splashes of turquoise brighten the en suite bathroom, complete with a deep bathtub and rainfall shower. Two further bedrooms enjoy the same calming qualities with pops of colour and an array of custom storage. Both are served by a family bathroom, complete with a teal-tiled shower.









LOCATION

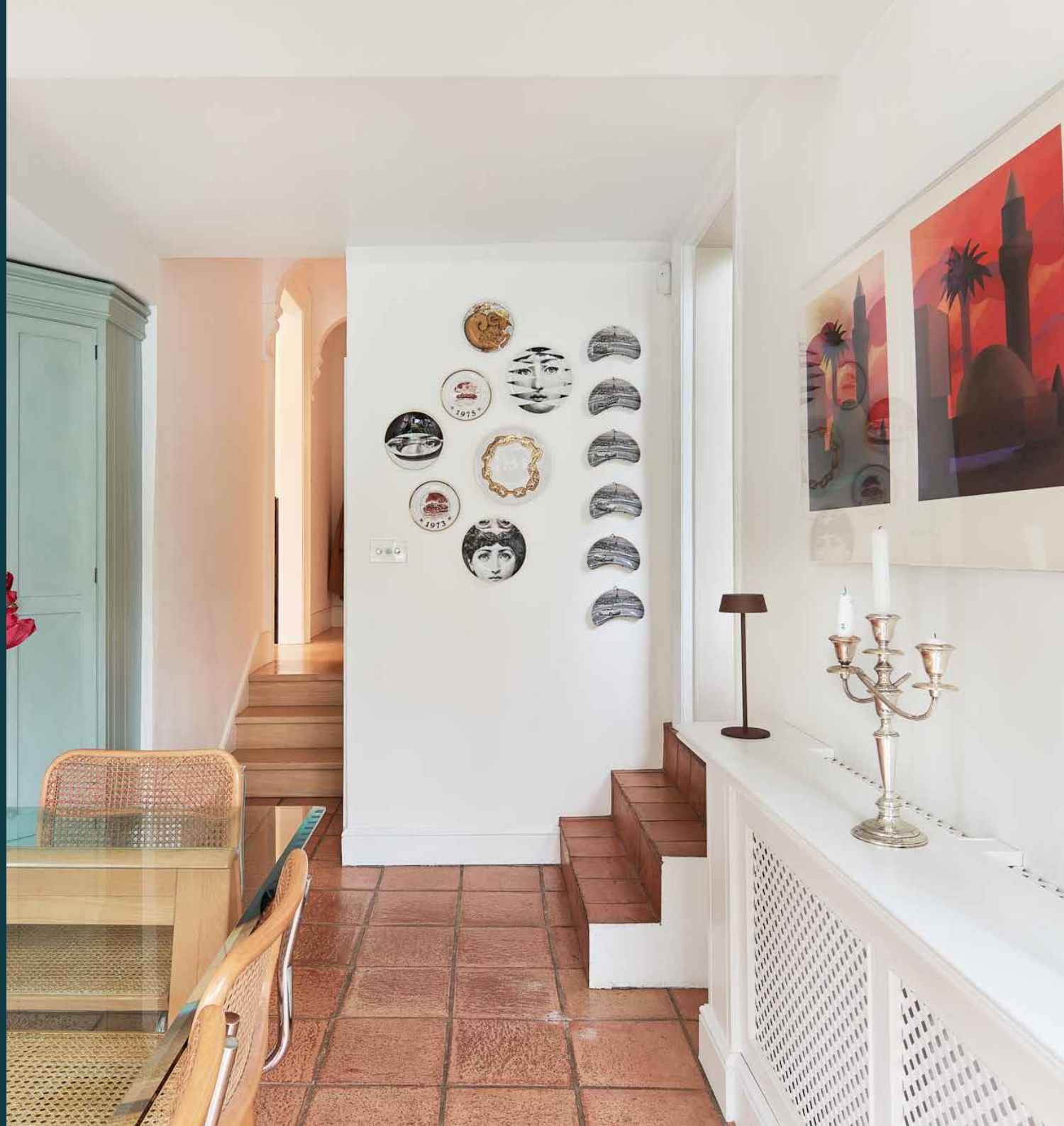
Sitting pretty between Chelsea and South Kensington, Sydney Place puts the area's hotspots directly on your doorstep.

Start your morning with a sweet treat from The Hummingbird Bakery or Farm Girl, before embarking on an afternoon of culture at the Natural History Museum or the V&A. Brompton Road is a haven for shopping aficionados, with Ralph Lauren, ba&sh and, of course, Harrods. End the evening at fine dining institutions Claude Bosi at Bibendum or Daphne's and be home in five. Just a two-minute walk from South Kensington station, the home is well located to take you straight into central London.



PROPERTY HIGHLIGHTS

- Double reception room
- Contemporary kitchen
- Light and airy dining room
- Principal bedroom suite
- Two further bedrooms
- Family bathroom
- Private garden
- Royal borough of Kensington and Chelsea



domus stay.

Please don't hesitate to get in touch if you have any questions or require any further information.

hello@domusstay.com

+44 (0)20 8168 8880

Domus Stay provides the perfect combination of property, place and personal service for the world's most remarkable people. If you have any questions, or if we can help in any way, please contact us on the above number. Be it about a property you have, a property you want, dates to check or any special requirements you may need, we'd love a chat.

