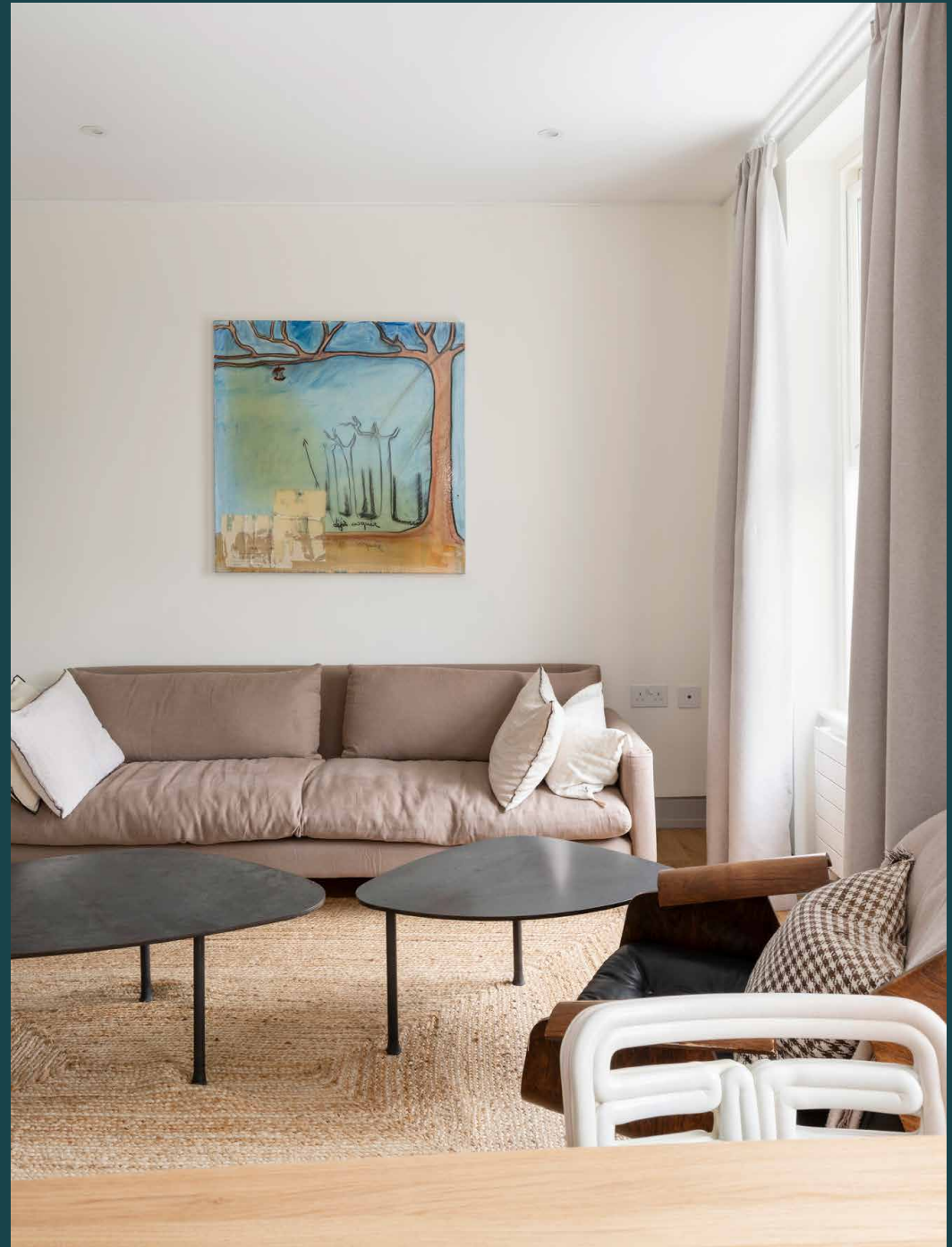

Portobello Road IV

Notting Hill W11

1 Bedroom, 1 Bathroom
For 2 guests





Gazing across the iconic Electric Cinema, this bright one-bedroom apartment takes a coveted spot on Portobello Road.

Overlooking Notting Hill's most vibrant thoroughfare, this lateral hideout is an enclave of calm. Inside, a juxtaposition to its spirited area unfolds courtesy of natural light and a neutral palette.

Brightened by two large sash windows, the open-plan living space wears a restful aesthetic. Minimalist decor and natural textures work in harmony here; there's a welcoming quality to the sitting area found to one side. Cooking and dining areas are arranged opposite, with a contemporary kitchen kitted out for cooking up feasts. Sleek black worktops and integrated appliances elevate the culinary experience, while meals come with a view of the vibrant street below.

The opposite side of the apartment is given over to calming sleeping quarters. Infused with light from a west-facing window, it's an inviting space to relax or rest. A wall of light grey wardrobes makes mornings a breeze, while a separate storage area allows for finds from the market or Westbourne Grove's boutiques. The sophisticated family bathroom features a bathtub and overhead rainfall shower.











LOCATION

A centre for antiques traders, vintage boutiques and global eateries, Portobello Road is the beating heart of this west London neighbourhood.

Eclectic eateries are in plentiful supply here. Grab a sweet treat and caffeine kick from Chai Guys Bakehouse, or head to Holy Carrot for a plant-based brunch. Venture up to Golborne Road for Moroccan fish grills and acclaimed local bakeries. Refresh your wardrobe at Sézane or Reformation on Westbourne Grove or browse the market for vintage treasures. Fine dining is in abundance, from Michelin starred Core by Clare Smyth to local gastropub The Cow. One of the oldest working cinemas in Britain, the Electric Cinema takes you back in time with its leather armchairs and tables for food and drink.



PROPERTY HIGHLIGHTS

- Open-plan kitchen, dining and reception room
- Principal bedroom with bespoke storage
- Family bathroom
- Storage space
- Royal Borough of Kensington & Chelsea





Please don't hesitate to get in touch if you have any questions or require any further information.

hello@domusstay.com

+44 (0)20 8168 8880

Domus Stay provides the perfect combination of property, place and personal service for the world's most remarkable people. If you have any questions, or if we can help in any way, please contact us on the above number. Be it about a property you have, a property you want, dates to check or any special requirements you may need, we'd love a chat.

