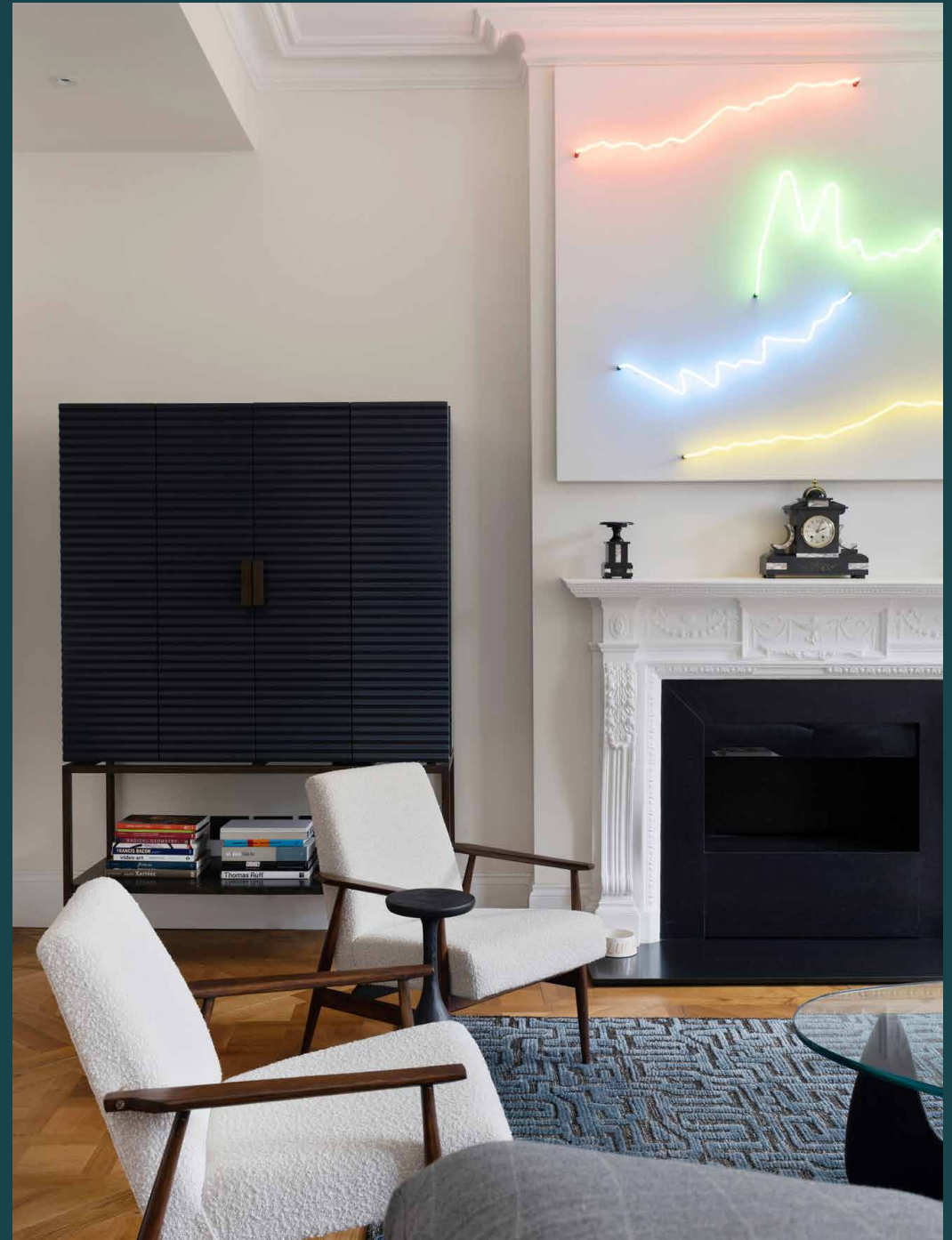


domus
stay.

Sunderland Terrace II

Notting Hill W2

2 Bedrooms, 2 Bathrooms
For 4 guests





Spacious in design and creative in feel, this reimagined apartment in Notting Hill is a haven for those who appreciate art.

Among smart, tree-lined Sunderland Terrace, Jette Anderson Interiors has brought a contemporary update to this period home. Behind a stucco façade and portico-fronted door, natural light washes through the open living spaces, illuminating a curated selection of artwork and considered furnishings.

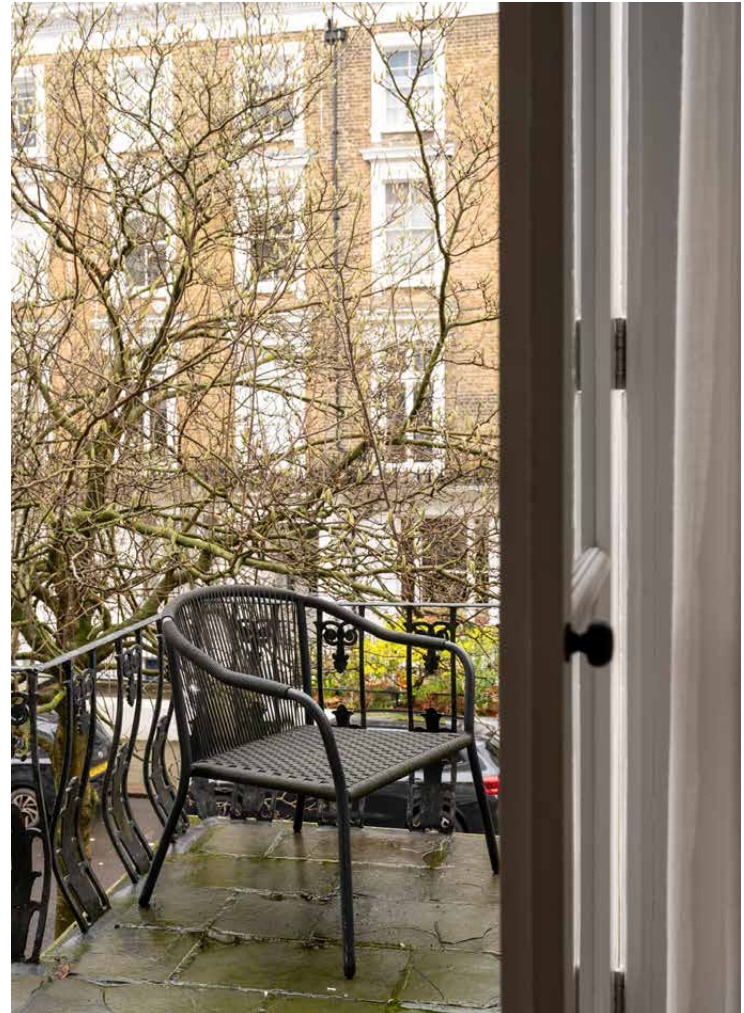
Set up to mimic a gallery, the reception room's white-toned walls are a canvas for eclectic prints and original masterpieces. A bespoke neon piece above a period fireplace draws the eye, while an expansive sofa is the perfect place to kick back and enjoy the surroundings. Full-height French doors that reach up to the three-and-a-half metre ceilings accentuate the sense of space, while parquet floors ground the room. From the reception room, double doors open out onto a generous balcony that overlooks the leafy street below, while a second balcony looks out from the back of the home.

Upstairs, mid-century styling takes over in the open-plan kitchen and dining room. The social space revolves around a large table for eight – an ideal set up for entertaining. The kitchen enjoys a sunny disposition, with tiled sunflower art and a striking blue island-cum-breakfast bar that's the perfect spot for a morning coffee. A Rangemaster stove and oven adds a chef-like touch paired with a blue Zellige-tiled splashback alongside other state-of-the-art integrated appliances.





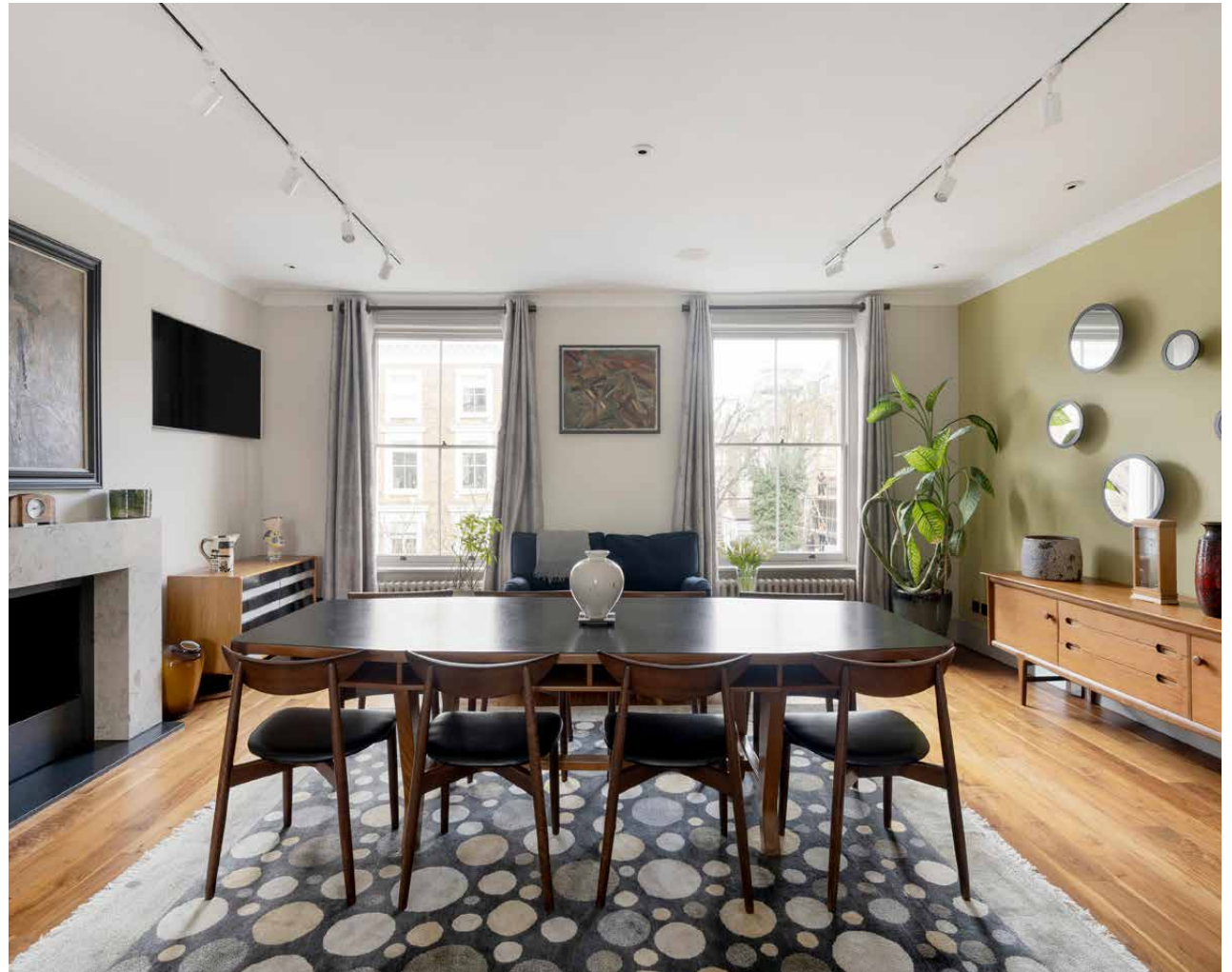




Interior designer Jette Anderson has ensured that art takes centre stage, with works by Jack Nicholson and Cassandre to Dorothy Mead and Zanele Muholi dotted throughout.

“

Designed to mimic an art gallery, enjoy the eclectic art collection.





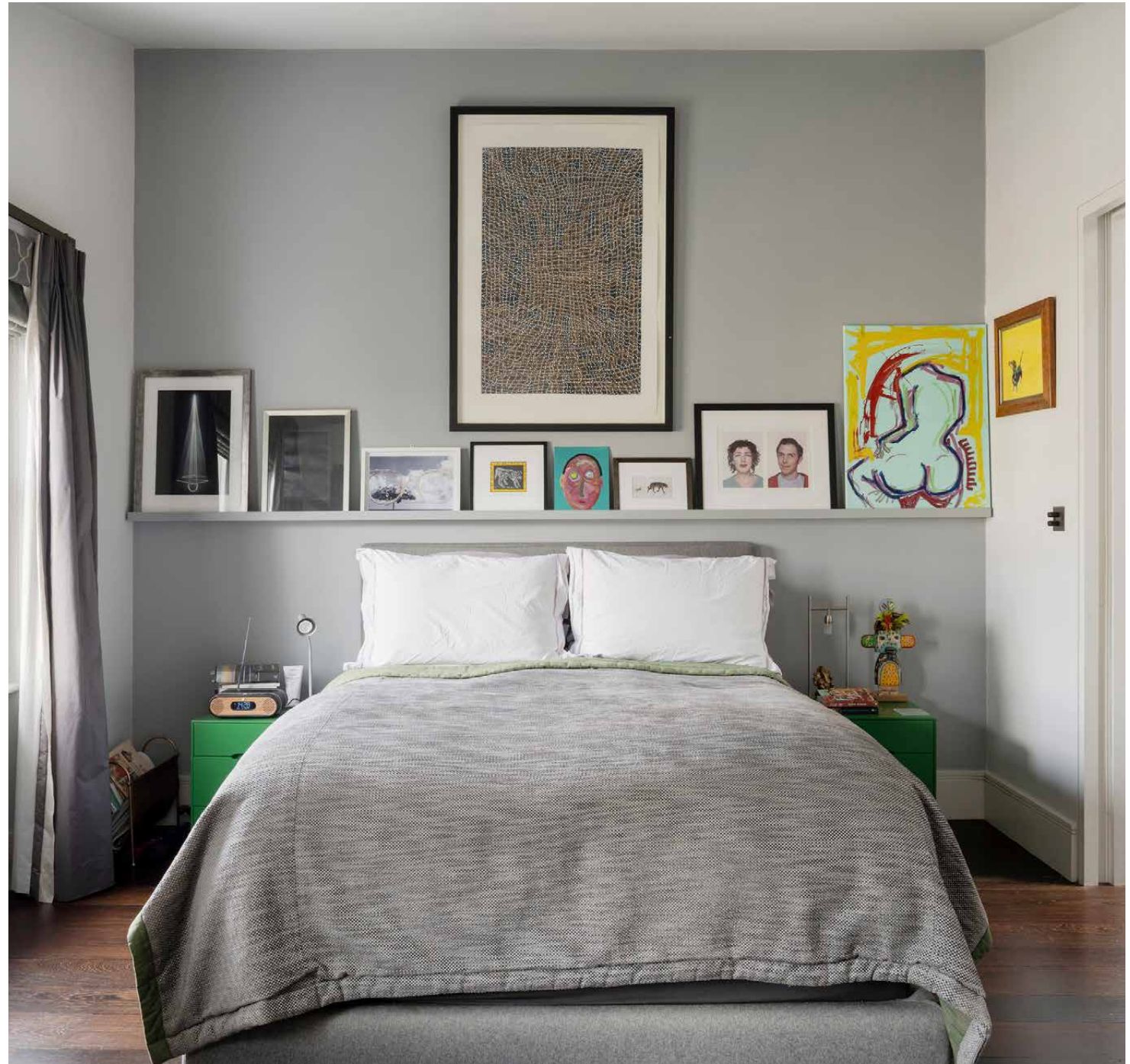






Sleeping quarters come with en suites and enjoy the privacy of their own floor. Art-filled walls continue up the stairs. A vaulted ceiling adds dimension to the principal suite where a king-sized bed and built-in storage make for comfortable living. A skylight casts light on the unfloor-heated en suite bathroom's grey wash walls. The guest bedroom suite enjoys a similar sense of homeliness, with warm-toned textures and an airy en suite shower room.

Personality and flair radiate through the furnishings and paintings and prints that adorn the walls. Each detail has been carefully curated, from the custom-made stained-glass window in the living room, to the original and sustainably sourced ochre horn handles in the principal bedroom.













LOCATION

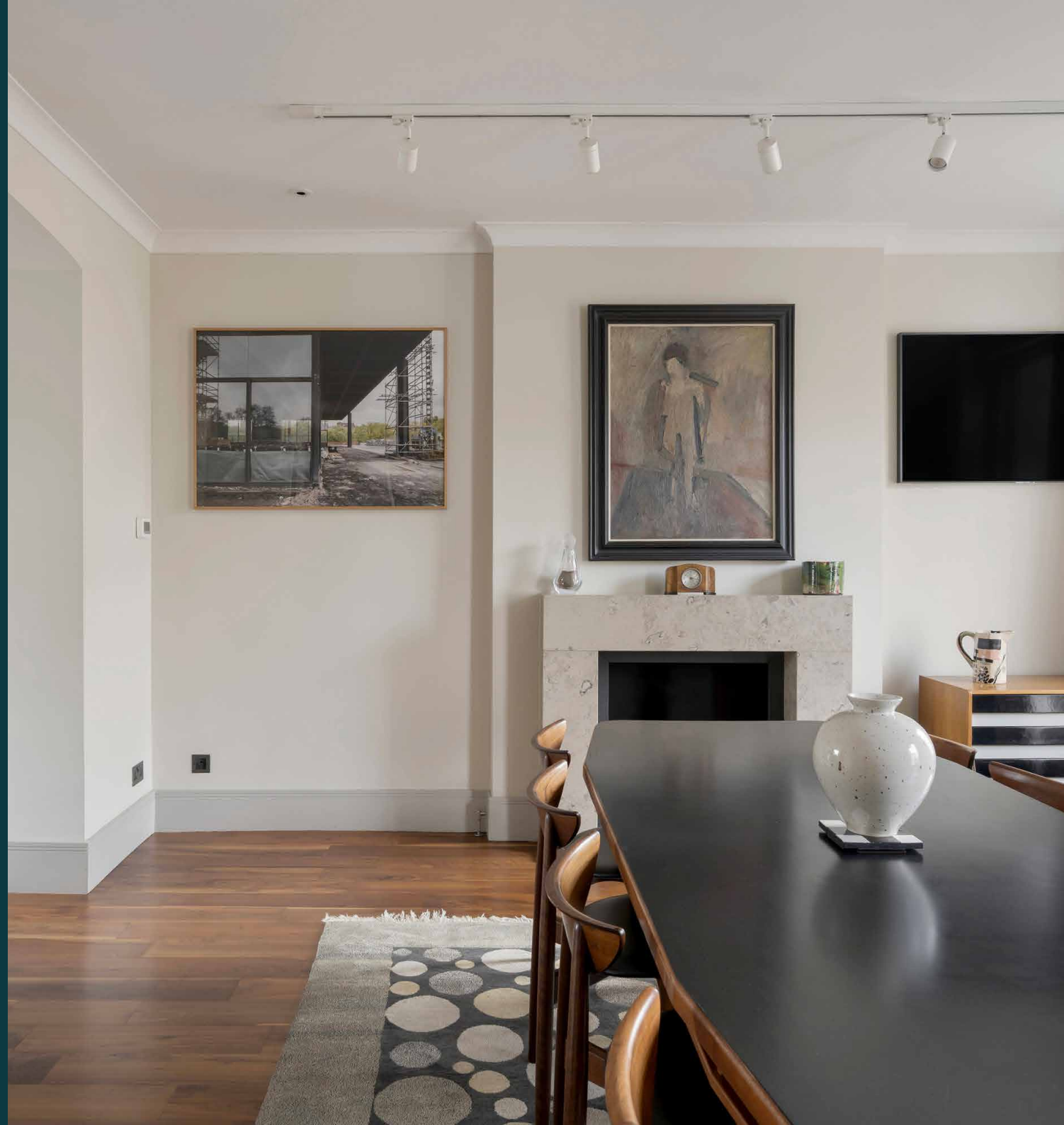
Enjoy the privacy of historic residential surroundings and the proximity to characterful Notting Hill.

Sunderland Terrace could not be better located to enjoy the myriad eateries on Westbourne Grove: try Beam for middle eastern inspired brunch or Sunday in Brooklyn for innovative spins on American classics. Find your perfect perfume at Diptique or indulge in a facial at Face Gym or Caudalie. Hyde Park is a 15-minute walk away for when you want your nature fix or hop on the Tube to venture beyond Notting Hill's pretty streets.



PROPERTY HIGHLIGHTS

- Interiors by Jette Anderson Interiors.
- Open-plan kitchen and dining room
- Reception room
- Principal bedroom suite
- Guest bedroom suite
- Cloakroom
- Study
- Two balconies
- City of Westminster



domus stay.

Please don't hesitate to get in touch if you have any questions or require any further information.

hello@domusstay.com

+44 (0)20 8168 8880

Domus Stay provides the perfect combination of property, place and personal service for the world's most remarkable people. If you have any questions, or if we can help in any way, please contact us on the above number. Be it about a property you have, a property you want, dates to check or any special requirements you may need, we'd love a chat.

