

domus  
stay.

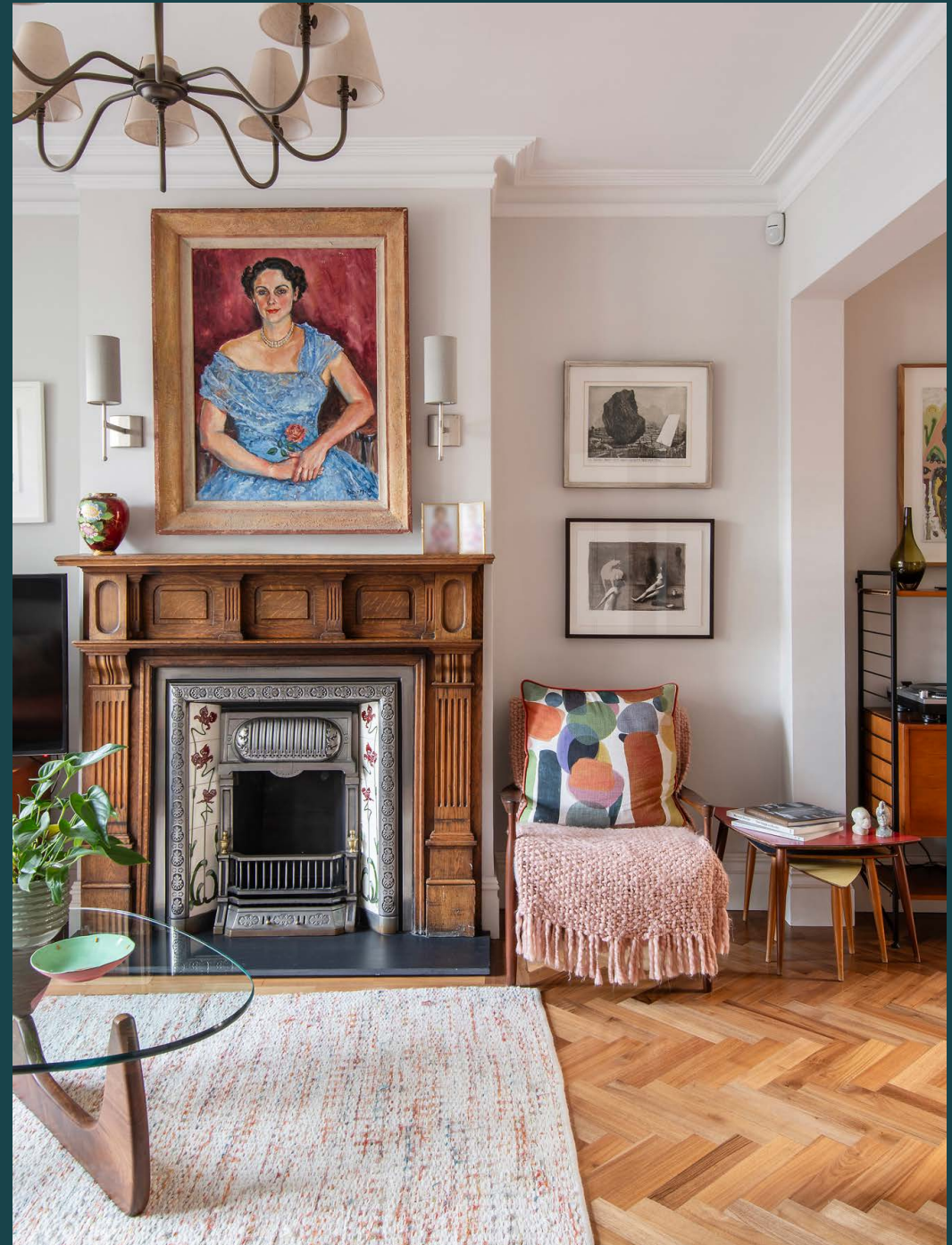
---

# Rusthall Avenue

Chiswick W4

4 Bedrooms, 3 Bathrooms  
For 7 guests

---





## A house that pays homage to its period roots, this four-bedroom home fills its traditional framework with eclectic interior design.

Past its picturesque period façade, Rusthall Avenue presents a captivating interplay of old and new. Incorporating a myriad of influences, each room transcends style to create eclectic spaces for modern living.

Inside, an open-plan reception room welcomes you with flair. Elevating the home's heritage features with vibrant design, a pared-back canvas is filled with tactile textures. A triple-pane window diffuses soft light across herringbone floors, while leather sofas provide peaceful viewpoints to admire a cast-iron feature fireplace or the room's collection of curios. Among an array of artworks adorning the walls, a striking juxtaposition is formed through two hanging opposite – a bright abstract canvas and a 20th century style portrait. In the adjoining dining area, enjoy dinner or drinks with an intimate ambiance courtesy of a further fireplace. On warmer evenings, open up the double doors to a courtyard.

Past a cloakroom and utility space, a traditional tiled hallway paves the way to the open-plan eat-in kitchen. A light-filled setting for socialising, dark teal cabinetry brings a welcoming depth, while integrated Miele appliances and a Rangemaster cooker make culinary adventures easy. Forming a scenic backdrop for an expansive dining table, arching double doors are the gateway to your own private oasis. Eat alfresco on the paved patio or relax on the lawn surrounded by blossoming bright hydrangeas.





A peaceful private garden comes with a paved patio for refined alfresco dining. Blossoming hydrangeas and verdant greenery provide a picturesque backdrop.



“

Forming a scenic backdrop for an expansive dining table, arching double doors are the gateway to your own private oasis.















Across the top floor, a subtle use of colour allows vibrant soft furnishings to bring a lively feel to the principal bedroom suite. Unwind under a spacious skylight, then dress with ease courtesy of extensive fitted wardrobes. Monochrome tiles and sage walls bring a soothing feel to the en suite, where a rainfall shower awaits. Spread across the first floor, pastel tones extend through three further bedrooms, one of which features an en suite shower room. A spacious family bathroom with an elegant roll-top bathtub and walk-in shower also sits on this floor.

























## LOCATION

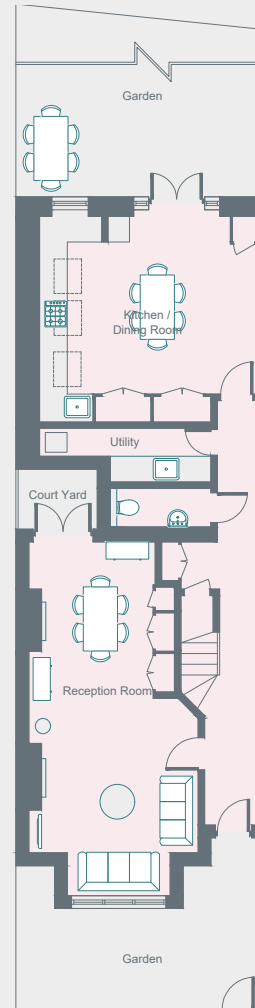
A picturesque residential spot, **Rushall Avenue** offers both privacy and easy proximity to Chiswick's hotspots.

Chiswick High Road is a comfortable walk away, where a wealth of shops, cafes and traditional pubs await. Grab a coffee from Gail's, then spend an afternoon wandering leafy Turnham Green. Stop by Foster Books to browse their selection of first editions and rare finds, then head to Villa di Geggiano for a taste of Tuscany in a quaint Italian-style setting.

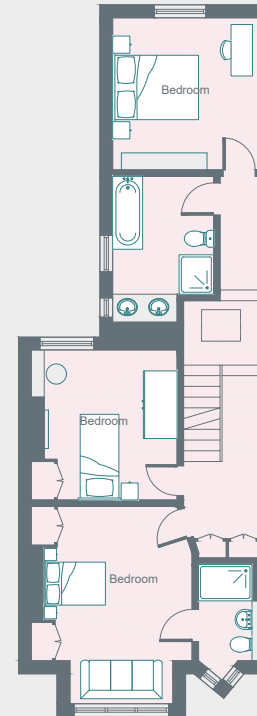


### PROPERTY HIGHLIGHTS

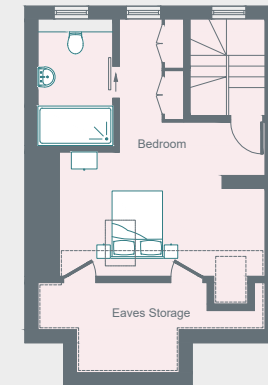
- Open-plan reception and dining room
- Spacious eat-in kitchen
- Principal bedroom suite
- Guest bedroom suite
- Two further bedrooms
- Family bathroom
- Cloakroom
- Utility room
- Private garden
- London Borough of Ealing



Ground Floor



First Floor



Second Floor



# domus stay.

Please don't hesitate to get in touch if you have any questions or require any further information.

[hello@domusstay.com](mailto:hello@domusstay.com)

+44 (0)20 8168 8880

Domus Stay provides the perfect combination of property, place and personal service for the world's most remarkable people. If you have any questions, or if we can help in any way, please contact us on the above number. Be it about a property you have, a property you want, dates to check or any special requirements you may need, we'd love a chat.

