

domus
stay.

Culford Gardens

Chelsea SW3

2 Bedrooms, 2 Bathrooms
For 4 guests





Seconds from Sloane Square and the King's Road, this polished two-bedroom apartment is as elegant as its setting.

With its rows of red-brick mansion blocks, Culford Gardens has undeniable kerb appeal. Distinguished yet decidedly laid-back, there's a relaxed feel to this Chelsea street that continues inside. Take the lift up to the third floor to an apartment that strikes the balance between classic and contemporary design.

The immediate impression here is one of space and abundant natural light. Two generous bay windows brighten the large reception and dining room, creating an inviting backdrop both day and night. Original parquet floors and antique furniture are lifted by modern grey tones, abstract artwork and a contemporary fireplace. There are sink-into sofas for unwinding, reading or watching TV, and a six-seater dining table for hosting or everyday mealtimes. When you want to watch the world go by, open the door to the cast iron balcony.

The adjoining design-led kitchen looks and acts the part. Stainless steel units, mirrored splashbacks and integrated appliances make this a practical and altogether enjoyable space to cook in.



Much like its Chelsea neighbourhood, this apartment enjoys a regal, refined atmosphere. Traditional, but with a sense of flair.

“

The new meets the old here, with period details elevated for modern living. Daily life plays out in light-filled, open-plan surroundings.



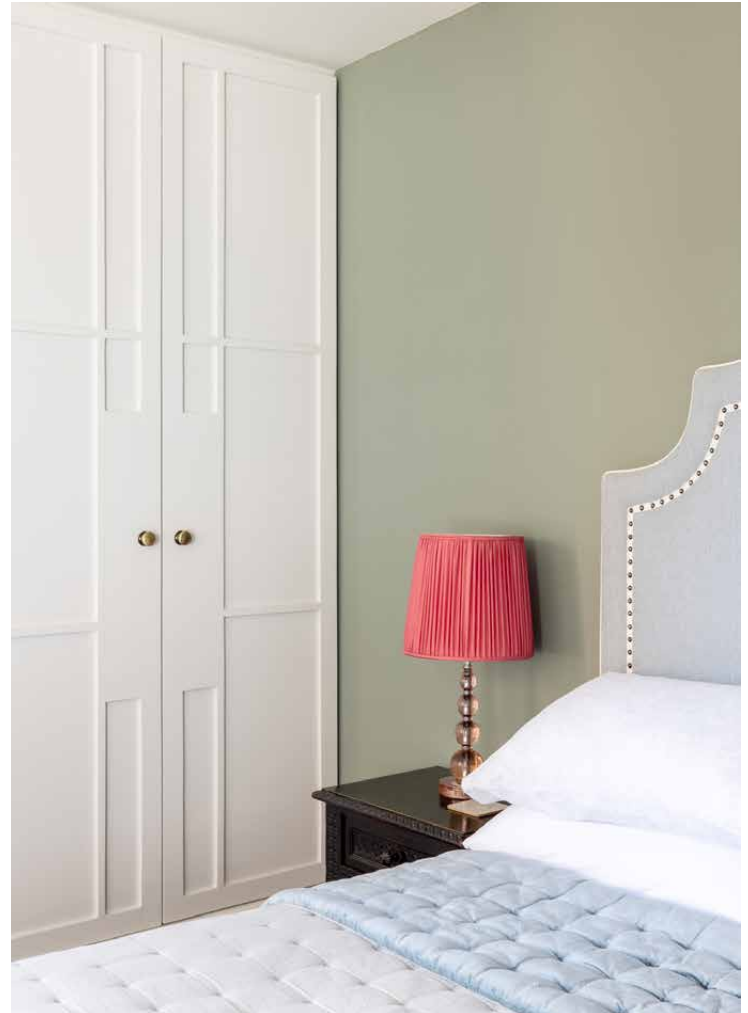


Both bedrooms are found tucked away towards the back of the apartment. The principal is plush and peaceful, with sage green tones lending a soothing effect. Everything is conducive to switching off, from the integrated wardrobes to hide clutter to the oversized, upholstered headboard that looks as though it's been lifted straight out of a hotel suite. A further touch of luxury, double doors lead through to the en suite bathroom – all bottle green tiles, dual vanities and a separate bathtub and shower.

The second bedroom is just as considered, and can be set up as a twin. Storage is in ample supply – take your pick from the integrated cupboard space and the huge, intricately carved wardrobe. Things take a more contemporary turn in the bathroom, finished in mosaic tiles in an array of burnished tones.

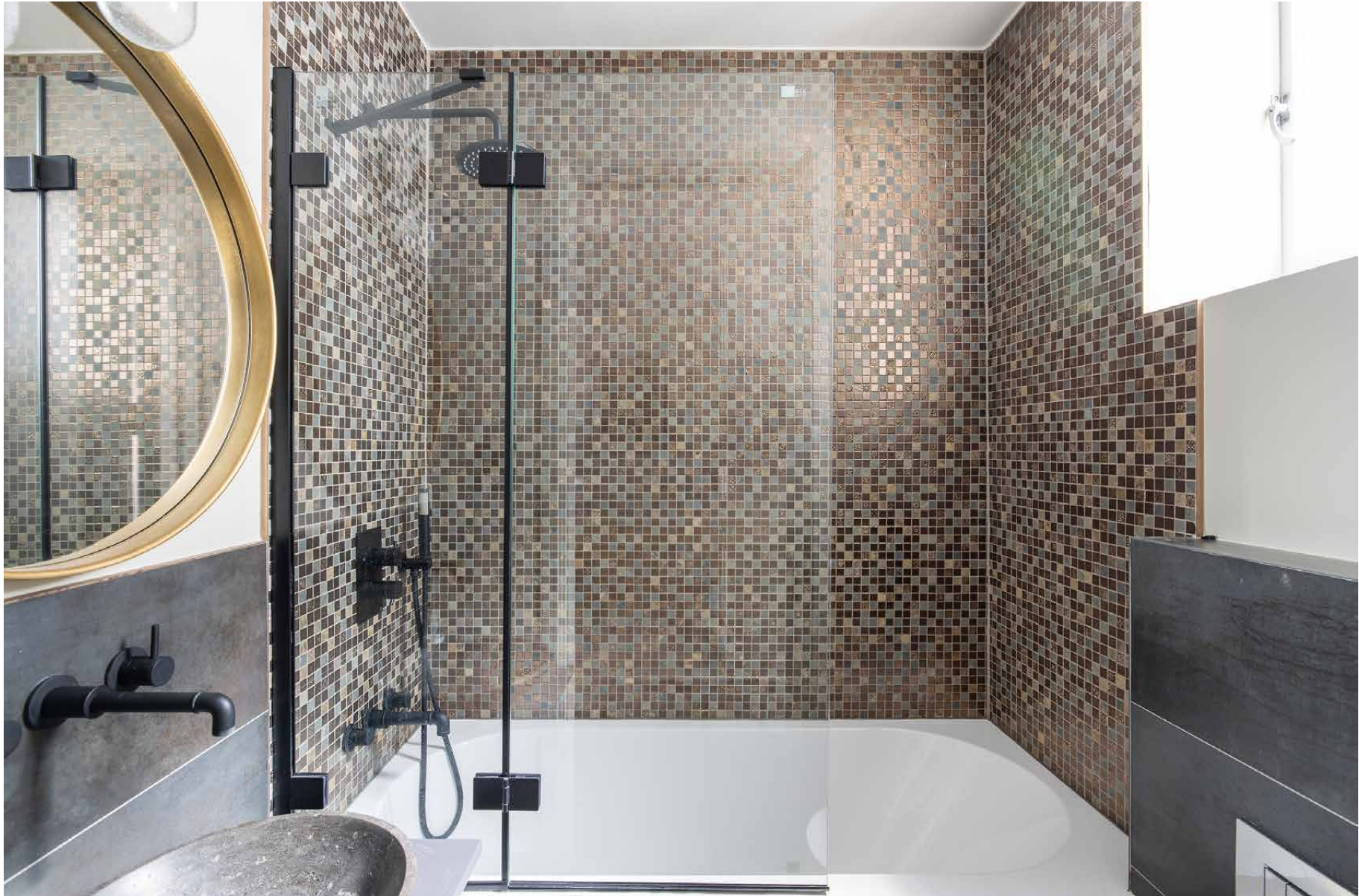










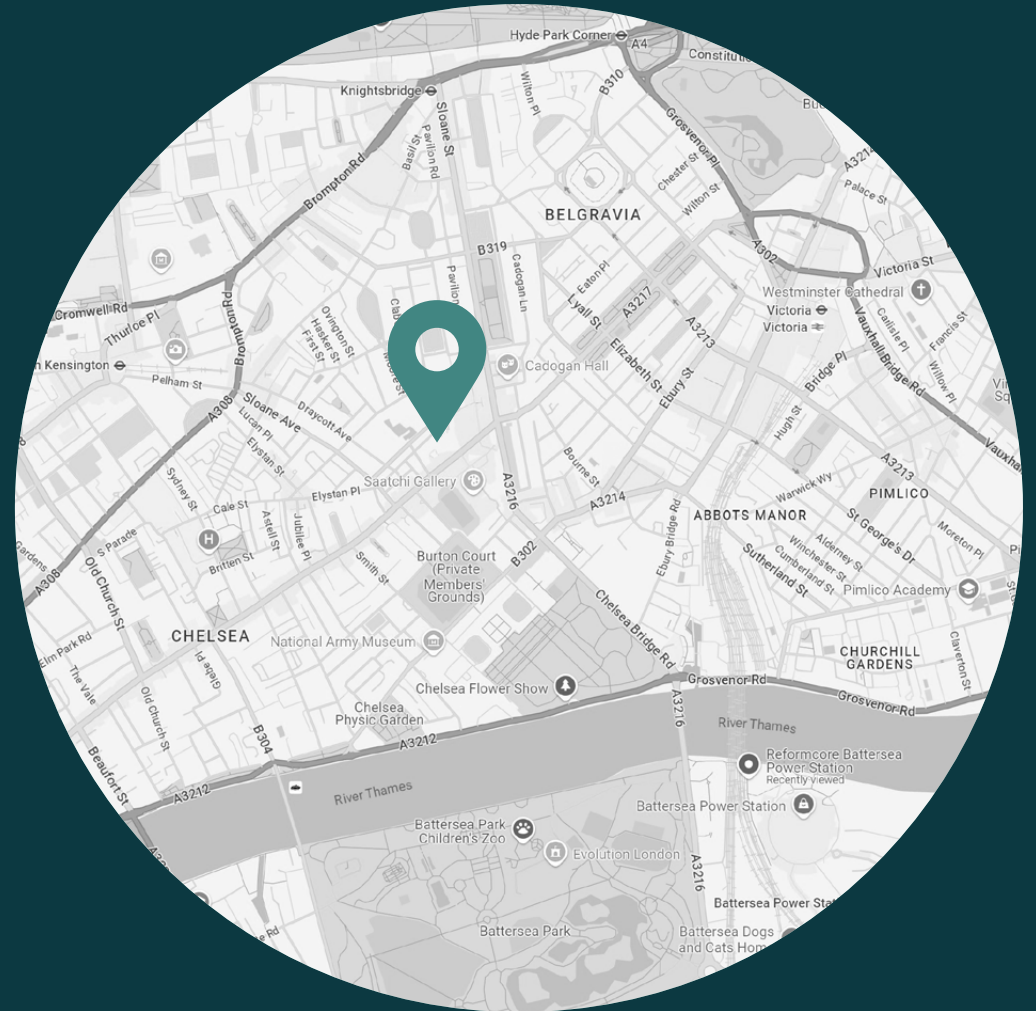




LOCATION

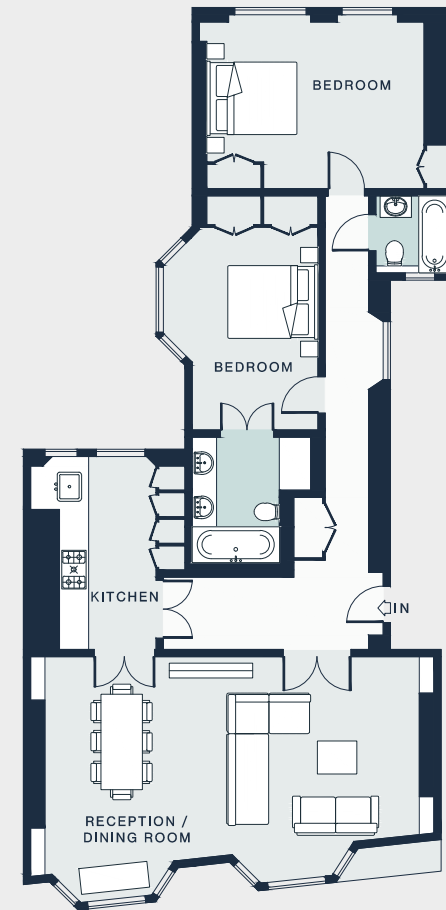
Just around the corner from the beating heart of Chelsea, Culford Gardens is in strolling distance of the best of everything.

Eat, drink and shop your way around the neighbourhood. Within one minute's walk, you'll find Michelin-starred restaurant The Five Fields. A few minutes more and you'll be at Sloane Square and famed French bistro The Colbert. Or make a beeline for the nearby boutiques of the King's Road. Duke of York Square and the Saatchi Gallery are also both in easy reach of your front door.



PROPERTY HIGHLIGHTS

- Red-brick mansion block apartment
- Double reception and dining room
- Ample natural light and large bay windows throughout
- Contemporary kitchen
- Principal bedroom suite with storage
- Guest bedroom
- Family bathroom
- Balcony
- Lift access
- Royal Borough of Kensington & Chelsea



Approx. Gross Internal Area = 1,211 sq ft / 112.52 sq m

Floor plans are for illustrative purposes only and not to scale. Compliant with RICS code of measuring practice.



Please don't hesitate to get in touch if you have any questions or require any further information.

hello@domusstay.com

+44 (0)20 8168 8880

Domus Stay provides the perfect combination of property, place and personal service for the world's most remarkable people. If you have any questions, or if we can help in any way, please contact us on the above number. Be it about a property you have, a property you want, dates to check or any special requirements you may need, we'd love a chat.

