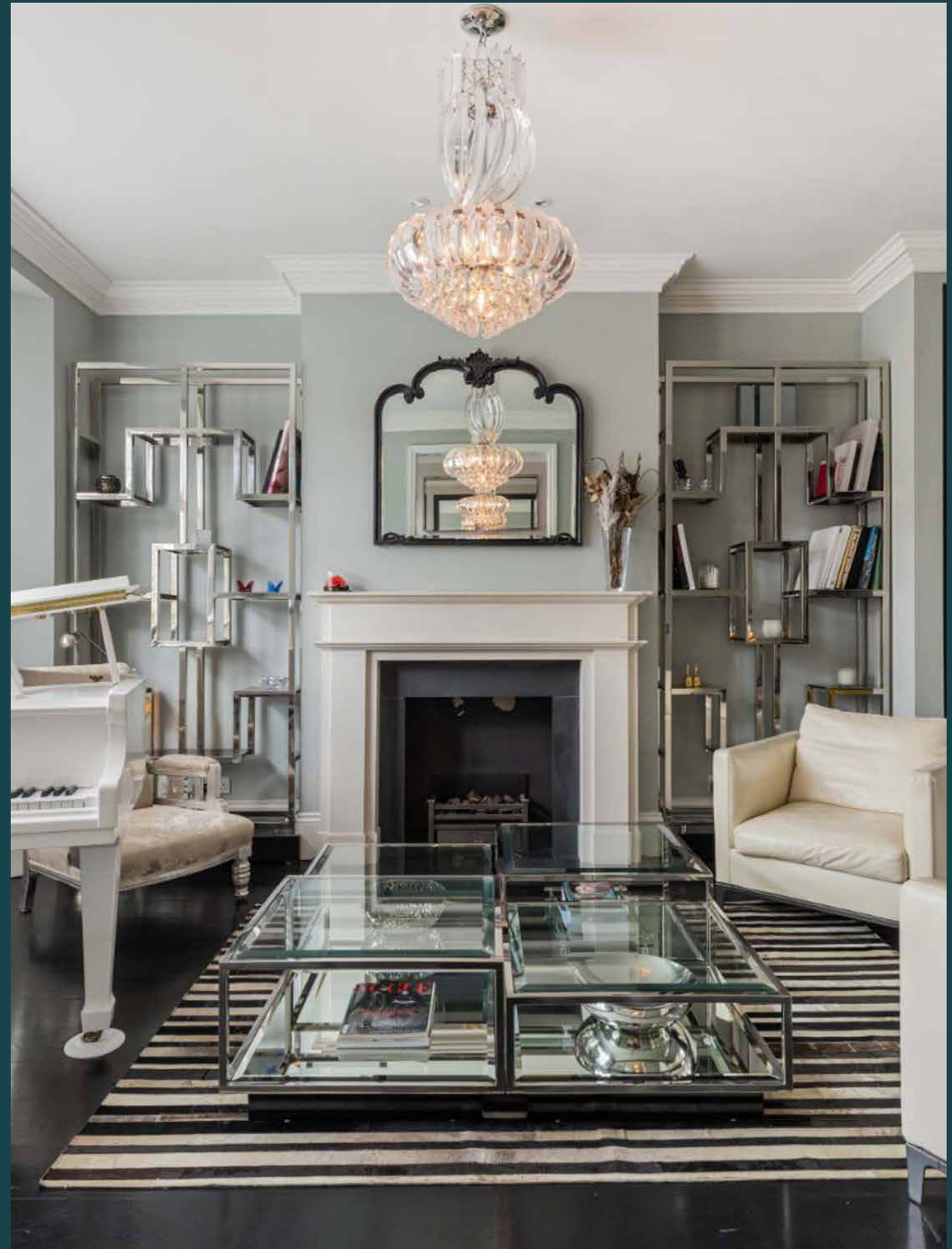


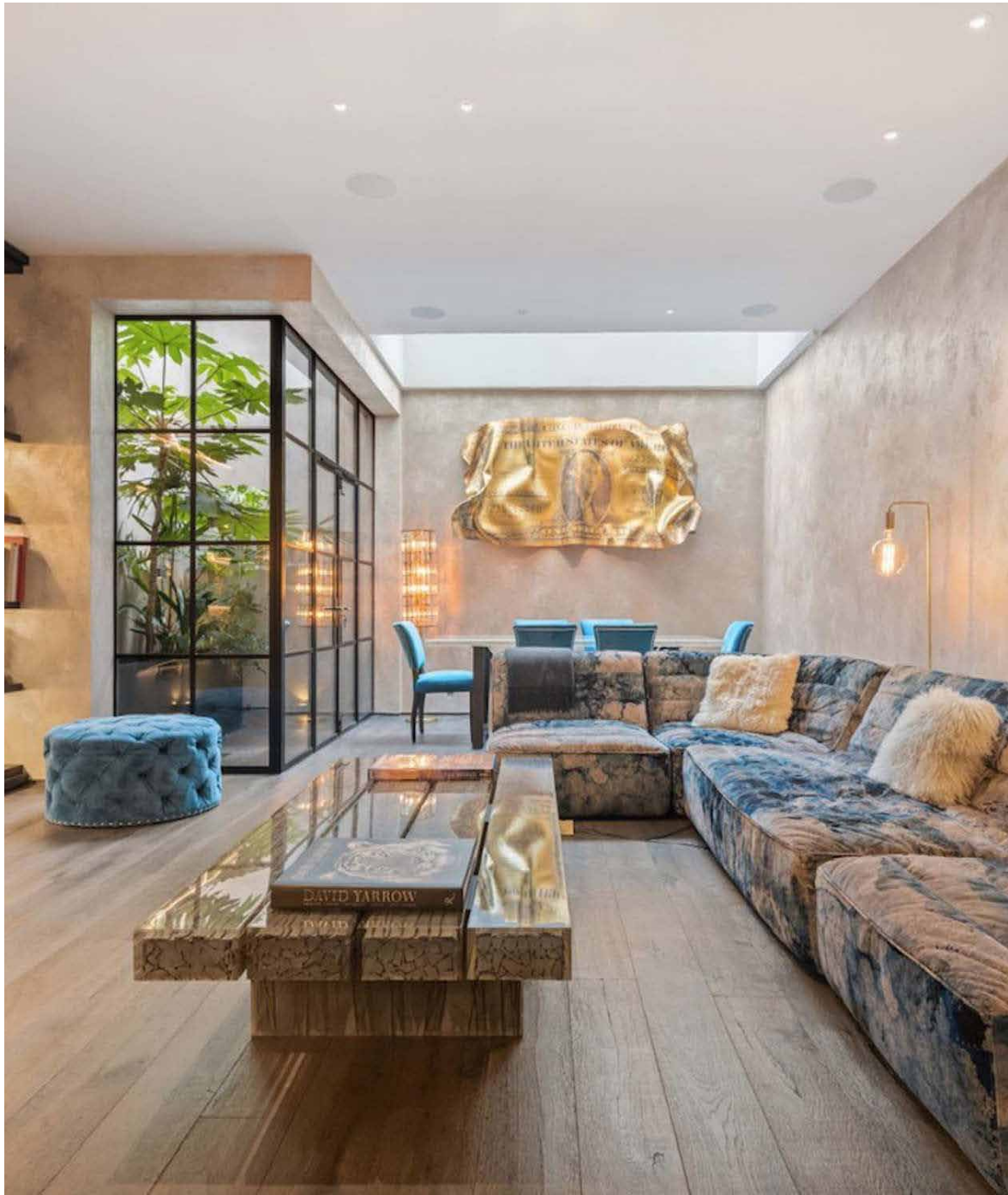
domus
stay.

Highlever Road

North Kensington W10

4 Bedrooms, 4 Bathrooms
For 8 guests





An impressive media room and grand piano provide the entertainment at this redbrick townhouse attuned to family life.

Community minded North Kensington provides the backdrop for this convivial home, within walking distance to independent shops, bars and restaurants. There's plenty to distract inside too. With an open-plan layout designed for families, a double reception room wraps around to an eat-in kitchen. Practice scales on the eye-catching grand piano, read by the gas fire, or kick back in front of the smart TV. Design is on the sophisticated side – think dark wooden floors and a muted colour palette that accentuates the generous sense of space.

The kitchen looks and acts the part, complete with quartz worktops, an induction hob and a table that seats eight. From here, step out into a private east-facing garden that catches the morning light.

The heart of the home is found on the lower ground floor – a standout entertaining space that's as well suited to movie marathons as it is socialising with friends and family at the back-lit bar or around the formal dining table. Crittall doors open onto a small courtyard, while a lightwell brightens the space during the day. Come evening, filament lamps and mottled walls create an ambient backdrop.











Also on this floor, there's a quiet guest bedroom with a sofa bed and smart en suite bathroom. Three further bedrooms are found on the first floor, including the comfortable principal suite, with a window seat to watch the world go by. The adjoining bathroom features a freestanding bathtub and a large walk-in shower, all finished in soothing grey tones.





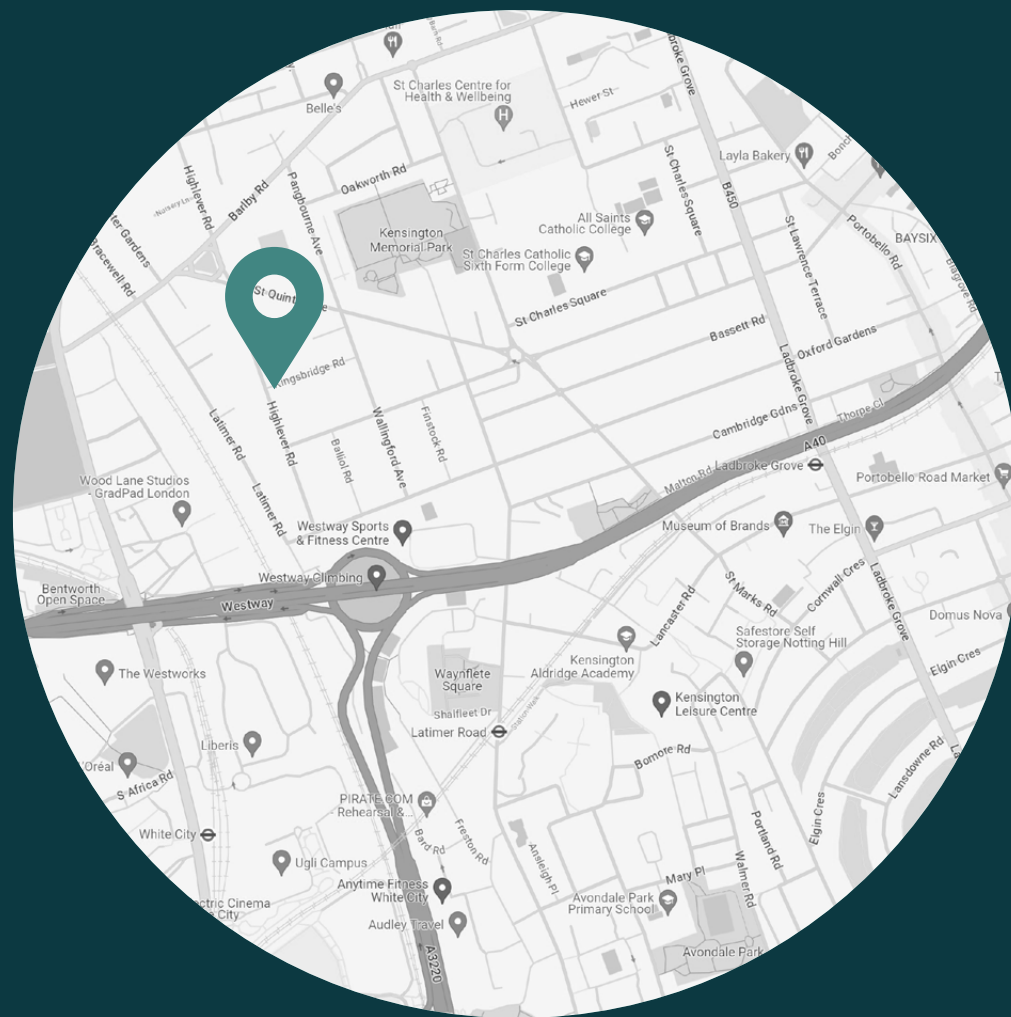




LOCATION

There's an easy-going community feel to North Kensington.

Within walking distance of both Golborne and Portobello Road, there's an array of independent businesses on the doorstep. Shop for supplies at Golborne Deli & Wine Store, book lunch at Straker's or enjoy pastries to go from Lisboa. Spend weekends browsing the neighbourhood's renowned antique and vintage stalls. For luxury shopping, The Village at Westfield is close by – stop for a drink at the White City branch of Soho House.



PROPERTY HIGHLIGHTS

- Double reception room with piano
- Contemporary eat-in kitchen
- Entertaining room with bar and dining table
- Principal bedroom suite
- Guest bedroom suite
- Two further bedrooms
- Family bathroom
- Shower room
- Sonos system



Approx. Gross Internal Area = 2,395 sq ft / 222.5 sq m

Floor plans are for illustrative purposes only and not to scale. Compliant with RICS code of measuring practice.



Please don't hesitate to get in touch if you have any questions or require any further information.

hello@domusstay.com

+44 (0)20 8168 8880

Domus Stay provides the perfect combination of property, place and personal service for the world's most remarkable people. If you have any questions, or if we can help in any way, please contact us on the above number. Be it about a property you have, a property you want, dates to check or any special requirements you may need, we'd love a chat.

