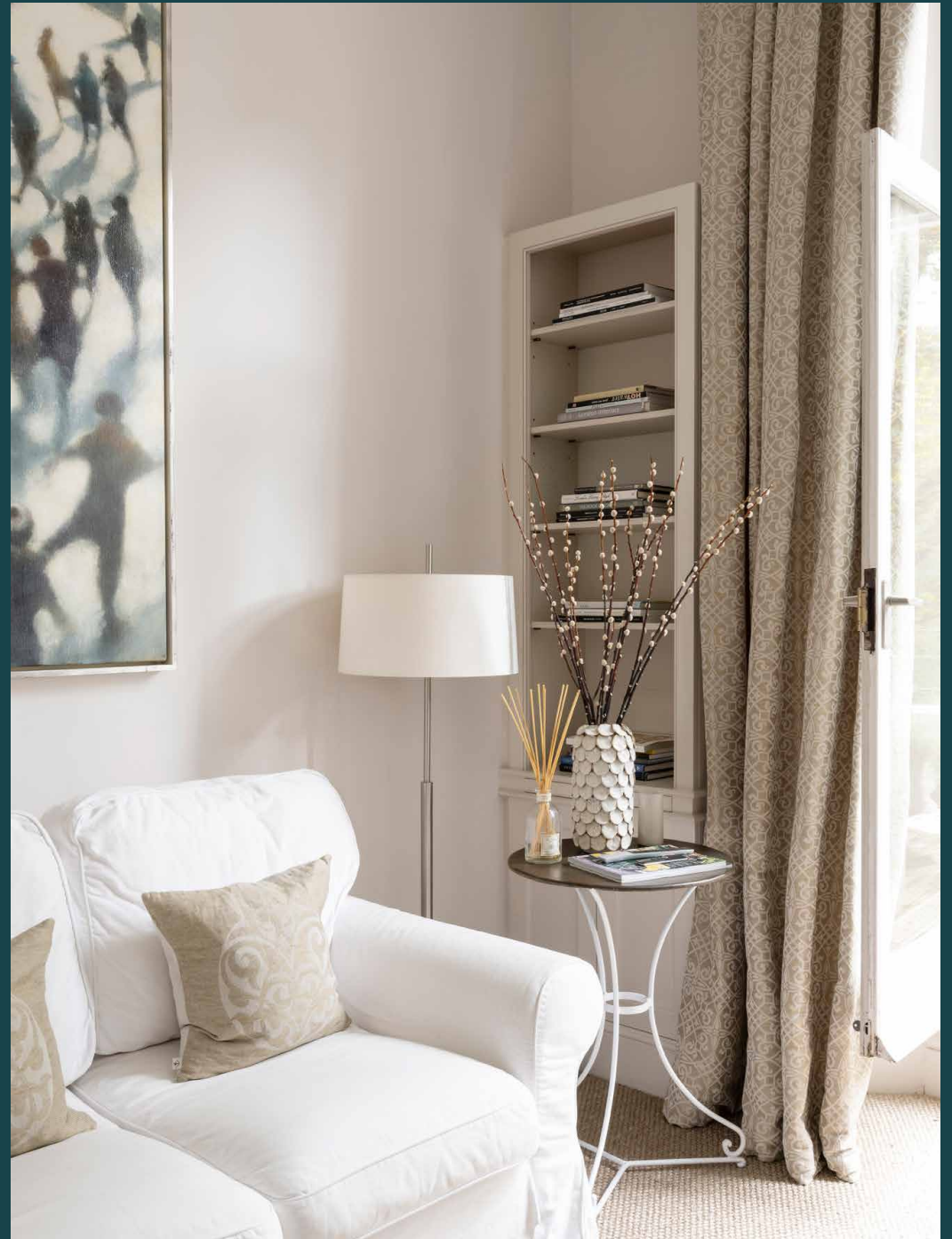


domus
stay.

Stanley Crescent II

Notting Hill W11

1 Bedroom, 1 Bathroom
For 2 guests





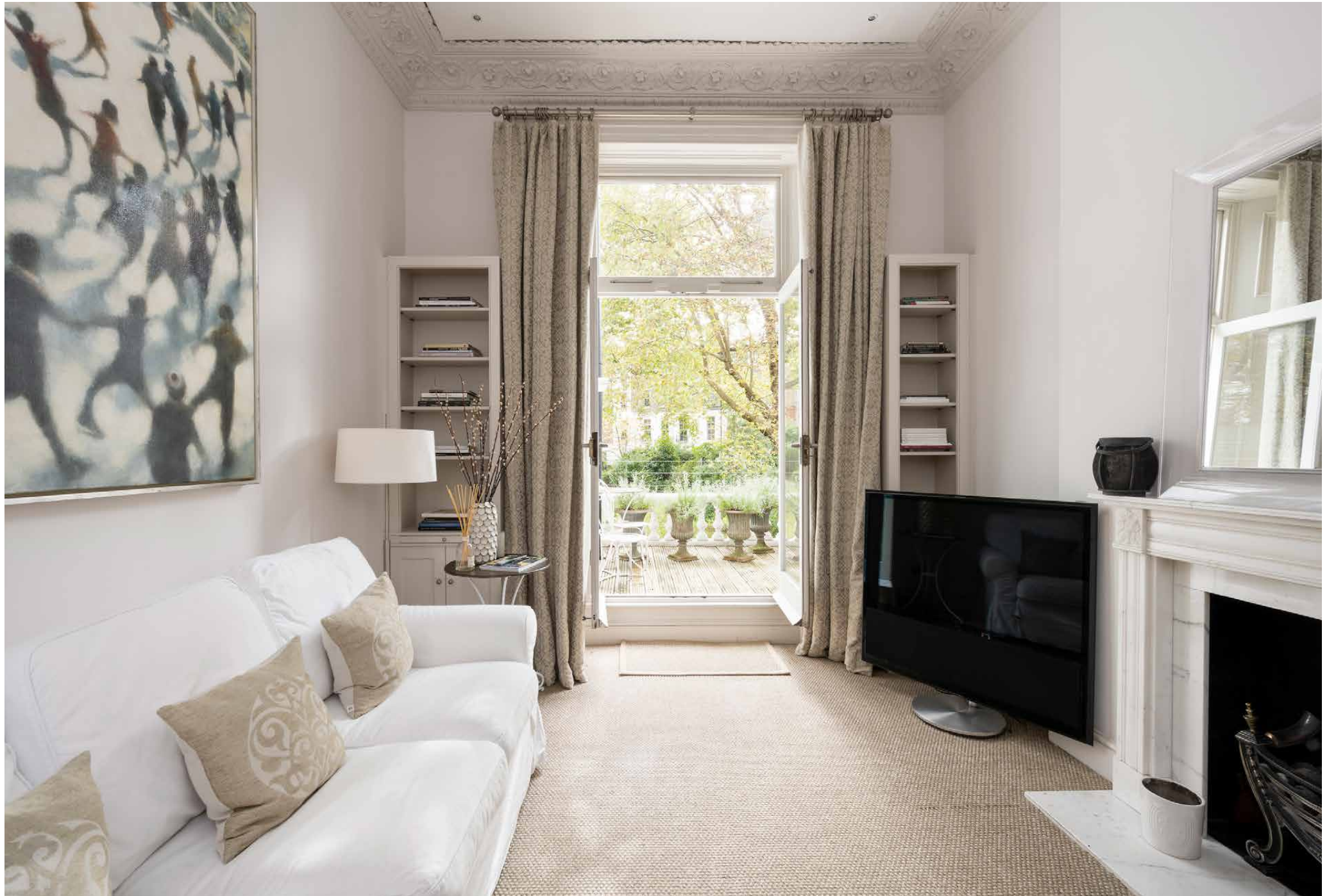
Set on a prime Notting Hill street, the palatial framework of this one-bedroom apartment comes styled to soothe.

Reflecting the elegance of its exclusive postcode, this period home is a compelling setting for city life. Expect ornate heritage features and soaring proportions, plus coveted access to Stanley Crescent gardens.

Arranged across the first floor, a hallway leads to a bright reception room. A neutral palette and high ceiling accentuate light filtering in from the terrace, accessed via floor-to-ceiling French doors. A south-facing setting that overlooks Stanley Crescent Gardens, there's ample room for outdoor dining or soaking up London's summer sun.

Inside, natural tones and textures produce a calming aesthetic. When daylight wanes, draw the curtains and settle down on the sofa; grab a page-turner from the bookshelf or scroll through films on the TV. Ideal for remote workers, there's also a desk. A bright galley kitchen sits separately, an uplifting space comprising beige stone counters, honey-toned floorboards and an adaptable table for dining.

Considered finishes flow through to the bedroom, generously lit by sash windows stretching up to the ceiling. Make use of the integrated wardrobes, an entire wall of endless storage. A family bathroom is found adjacent, fitted with a bathtub for unrivalled relaxation.















LOCATION

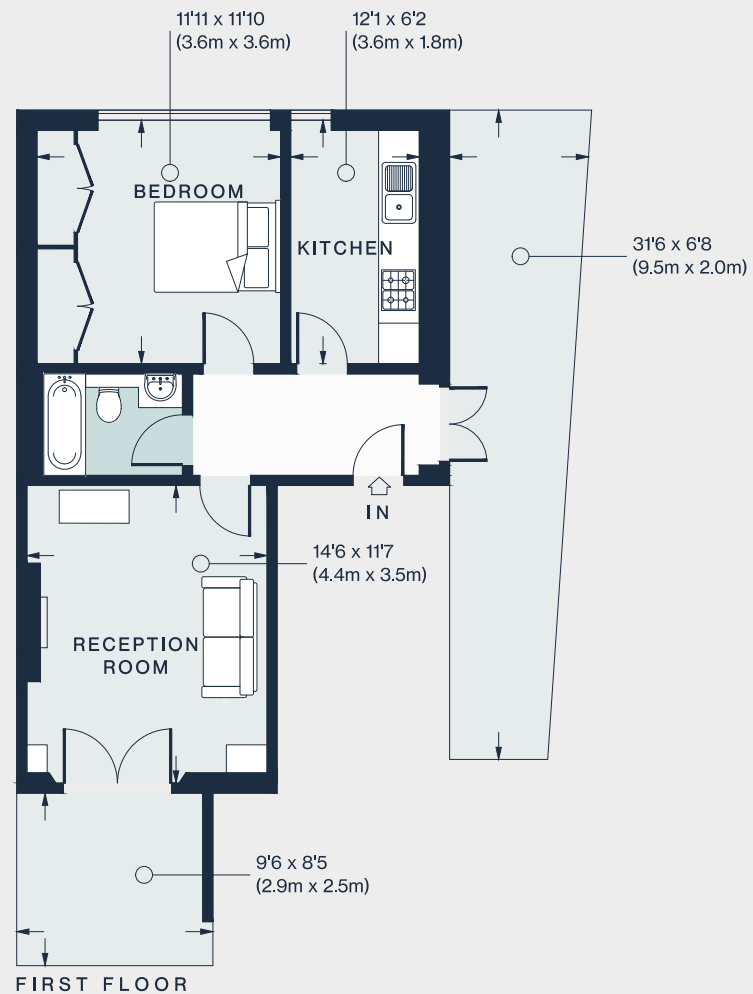
There's a best-of-both-worlds feel to this section of Notting Hill. A breather from city life, but with vibrant offerings on the doorstep.

Start your morning with a walk in Holland Park or rise early to unearth Portobello Road Market's best vintage treasures – less than five minutes' walk away. Stop by Farm Girl for brunch; head to Zephyr for dinner. Three-Michelin-starred Core by Clare Smyth is perfect for special occasions, and just a minute from your door. Conclude the evening with drinks at Gold.



PROPERTY HIGHLIGHTS

- Reception room
- Contemporary kitchen
- Principal bedroom
- Family bathroom
- Two terraces
- Communal garden access
- Royal Borough of Kensington & Chelsea



Approx. Gross Internal Area = 492 sq ft / 45.7 sq m

Floor plans are for illustrative purposes only and not to scale. Compliant with RICS code of measuring practice.



Please don't hesitate to get in touch if you have any questions or require any further information.

hello@domusstay.com

+44 (0)20 8168 8880

Domus Stay provides the perfect combination of property, place and personal service for the world's most remarkable people. If you have any questions, or if we can help in any way, please contact us on the above number. Be it about a property you have, a property you want, dates to check or any special requirements you may need, we'd love a chat.

